

## End Suction Centrifugal Pumps



# SHINDO HAS CONSTANTLY DEVELOP THE CREDIBILITY TO SERVE THE INDUSTRY EFFICIENTLY.

SHINDO IS COMMITTED TO PROVIDE HIGH VALUE-ADDED PRODUCTS IN MINIMUM LEAD-TIME AND AT COST EFFECTIVE PRICING, TO HELP CUSTOMERS ACHIEVE ZERO DOWNTIME, PRODUCTION TARGET AND HELP ENHANCE A SAFER ENVIRONMENT.



## END SUCTION CENTRIFUGAL PUMPS

### PAGE CONTENTS

01	APPLICATION   MODEL CODE
02	CONSTRUCTION DESIGN
03	GENERAL ARRANGEMENT DRAWING
04	SELECTION CHART
05	DIMENSIONAL DRAWING
06	DIMENSIONAL DRAWING (CONT.)

## Application

Shindo End Suction Centrifugal Pumps, Shindo S series are in compliance with european pump standard DIN24255/EN733. S Series can be used in commercial, residential, agriculture, industrial processing, petroleum, and food & beverage industries. Specifically, S series pumps are design for following applications:

- ✕ HVAC System
- ✕ Cooling Towers System
- ✕ Fire Fighting System
- ✕ Circulation System
- ✕ Water Pressure Boosting System
- ✕ Domestic Water Supply
- ✕ Water & Sea Water Treatment
- ✕ Refrigeration
- ✕ Chemical
- ✕ Irrigation

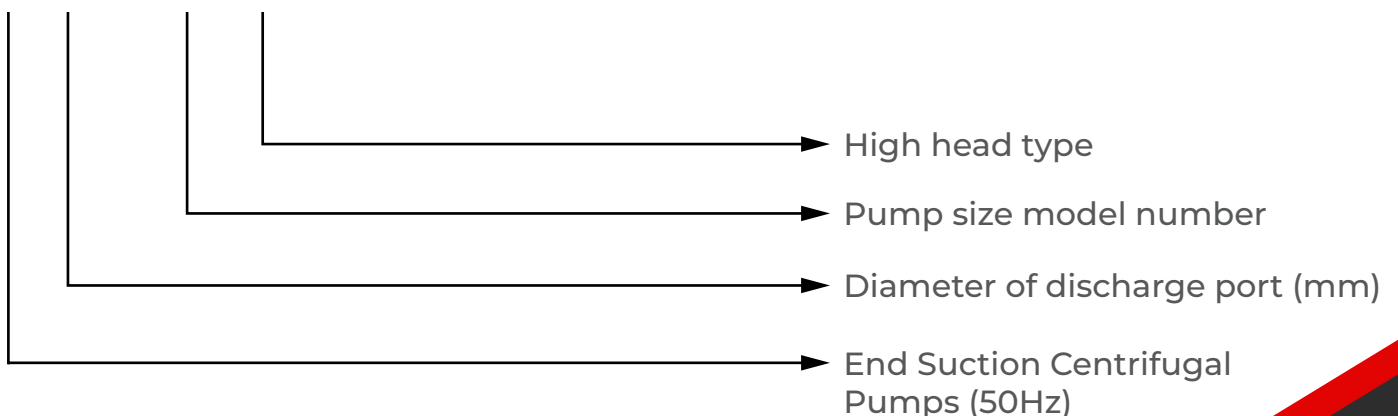
Performance range for S series:

- ✕ Max. Capacity (Q) = 1100m<sup>3</sup>/hr
- ✕ Max. Head (H) = 160m
- ✕ Max. Operating Pressure = 16 bar
- ✕ Liquid Temperature = -10°C to +105°C



## Model Code

**S 50 - 32 H**



# Construction Design

Shindo S series are in compliance with european pump standard DIN24255/EN733 which covers all sizes of the pumps. S series pumps are also design with axial suction and vertical discharge in which the connections are flange type for both suction and discharge. The pump has back pull-out design, and when a suitable spacer coupling is fitted to a direct coupled unit, the casing and motor can remain in position while other pump parts can be removed for simple and quick maintenance.

## Hydraulic Parts

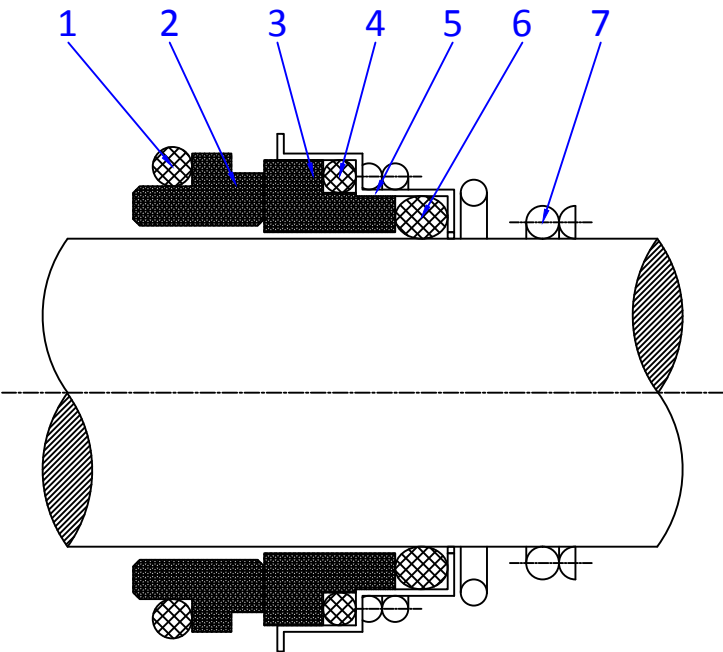
- α Casing is made up of cast iron.
- α Impeller is made up of stainless steel (SS304).
- α Shaft is made up of stainless steel (SS420).
- α The standard material of mechanical seal is Carbon/Ceramic/Viton.

*Note: 1. Impeller made up of bronze is also available on request.  
2. Fully stainless steel (SS304 or SS316) for wetted parts are also available on request.*

## Electric Motor

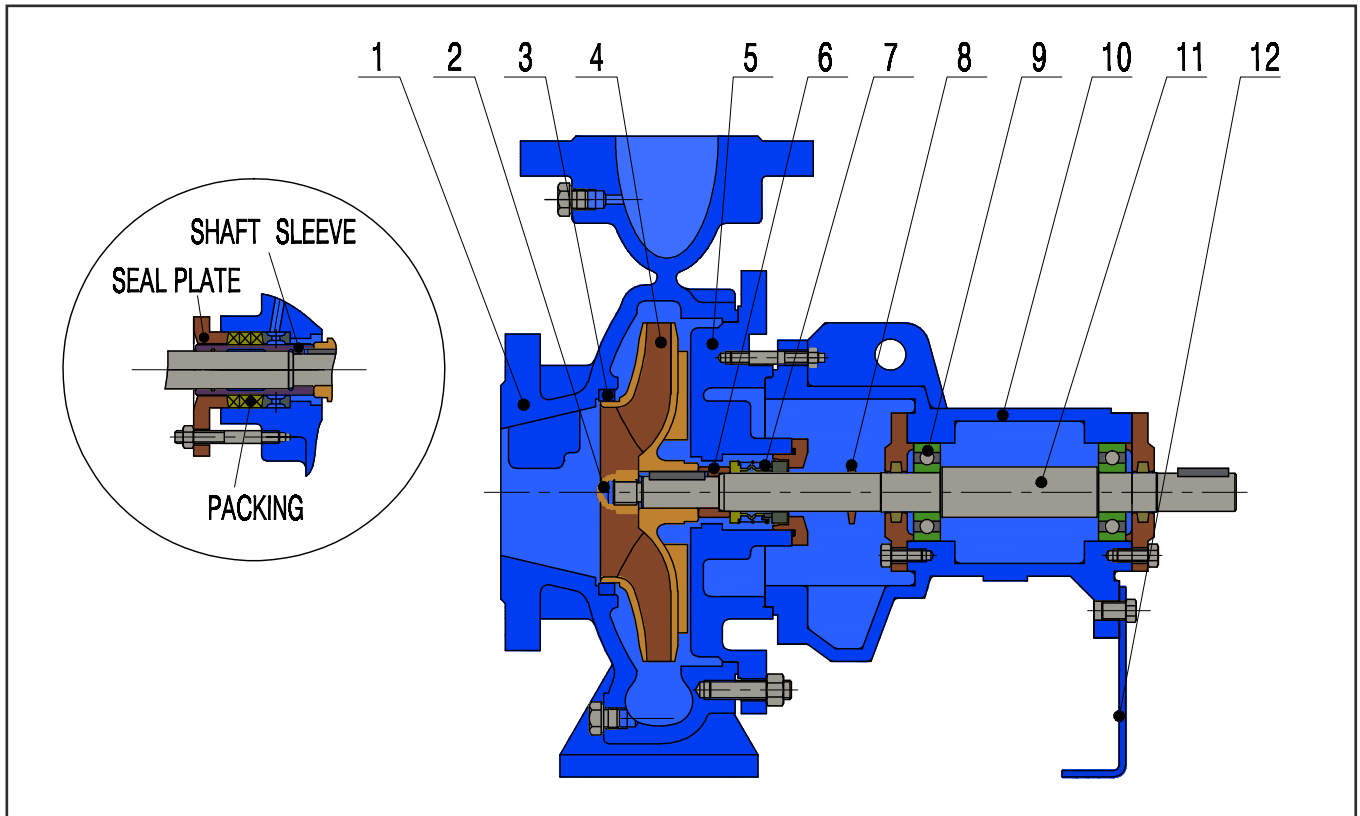
- α IEC standard.
- α Insulation Class: F
- α Enclosure Class: IP55
- α Speed: 1450RPM/2900RPM
- α Standard Voltage: 3 x 380-415V, 50Hz

## Material of Mechanical Seal



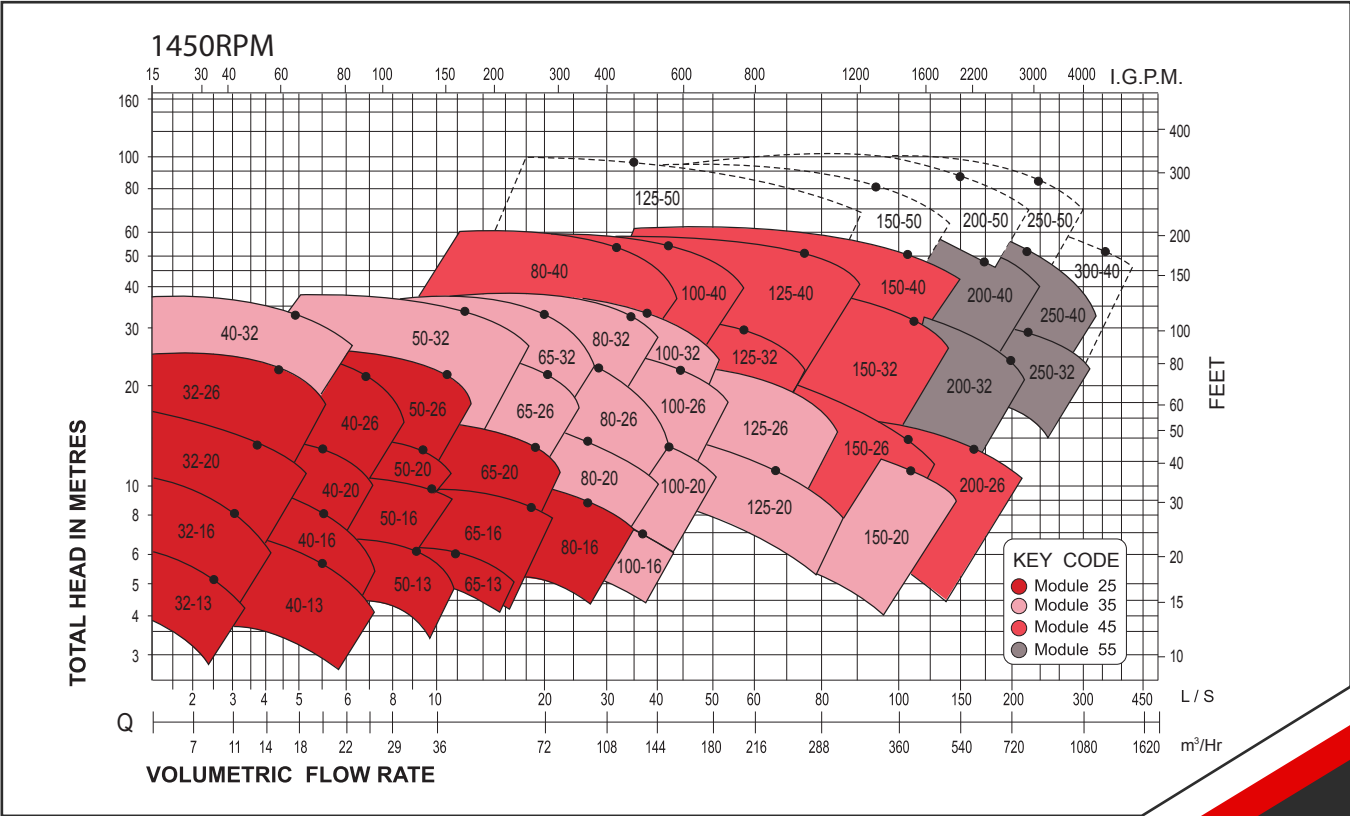
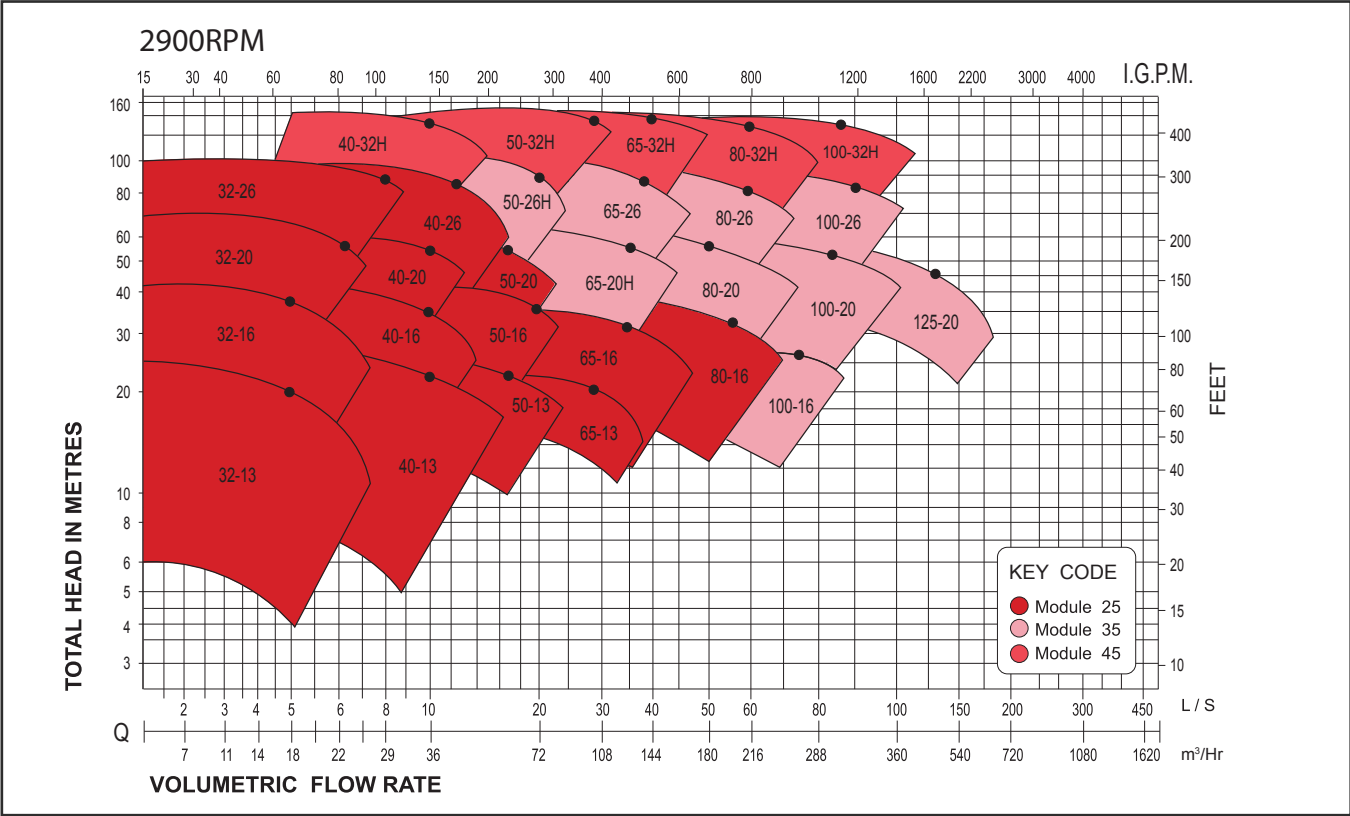
No.	Name	Qty	Material
1	O-Ring	1	Viton
2	Stationary Seats	1	Carbon
3	Seal Faces	1	Ceramic
4	O-Ring	1	Viton
5	Seal Faces Base	1	Stainless Steel
6	O-Ring	1	Viton
7	Spring	1	Stainless Steel

## General Arrangement Drawing

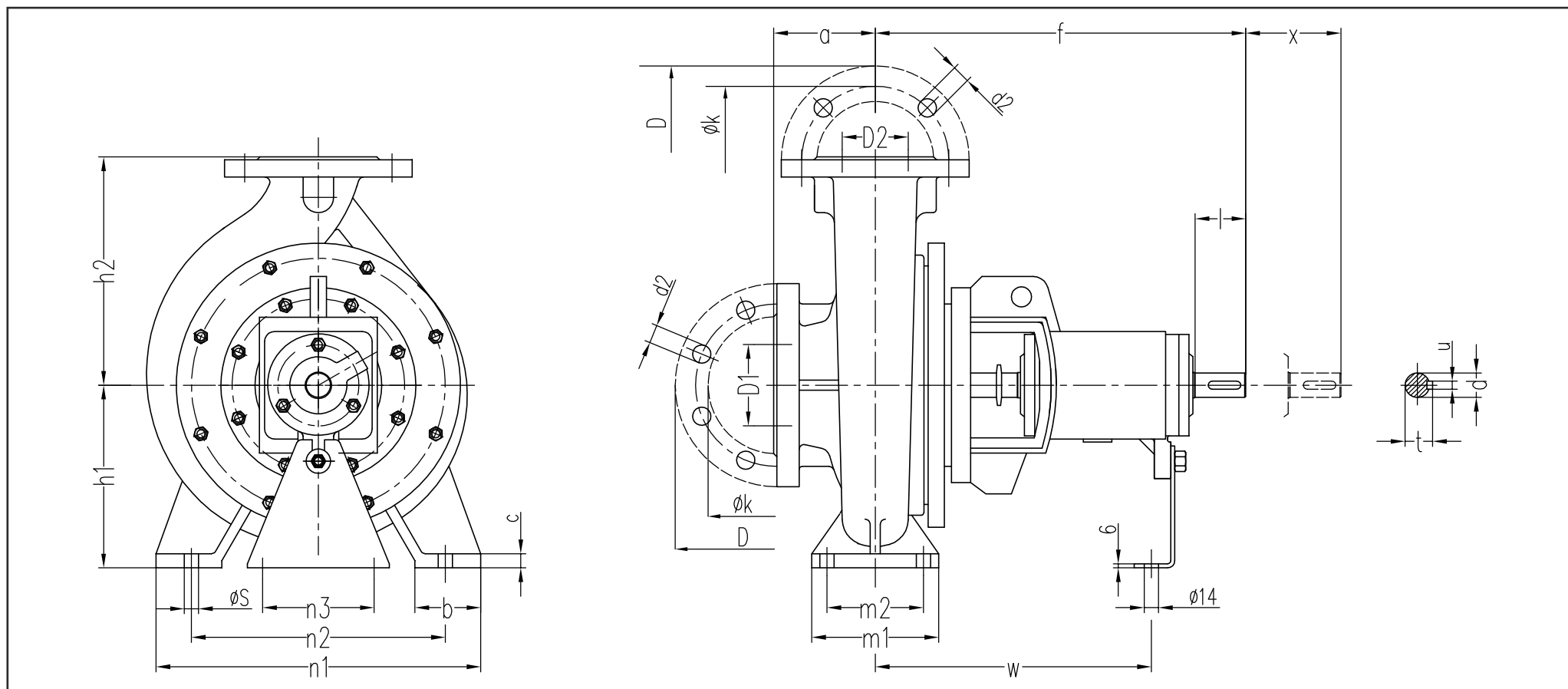


Part No.	Name
1	Volute Casing
2	Impeller Nut
3	Wear Ring
4	Impeller
5	Casing Cover
6	Shaft Sleeve
7	Packing/Mechanical Seal
8	Slinger
9	Bearing
10	Bearing Housing
11	Shaft
12	Support Foot

Selection Chart



## Dimensional Drawing





Pump Model	Bearing Housing	Dimensions																			
		D2	D1	a	f	h1	h2	b	c	m1	m2	n1	n2	n3	s	w	d	l	t	u	x
S32-13	25	32	50	80	460	112	140	50	14	100	70	190	140	100	14	267	24	50	27	8	4
S32-16	25A	32	50	80	460	132	160	50	14	100	70	240	190	100	14	267	24	50	27	8	4
S32-20	25	32	50	80	460	160	180	50	14	100	70	240	190	100	14	267	24	50	27	8	4
S32-26	25A	32	50	100	460	180	225	65	14	125	95	320	250	110	14	267	24	50	27	8	4
S40-13	25	40	65	80	460	112	140	50	14	100	70	210	160	100	14	267	24	50	27	8	4
S40-16	25A	40	65	80	460	132	160	50	14	100	70	240	190	100	14	267	24	50	27	8	4
S40-20	25	40	65	100	460	160	180	50	14	100	70	265	212	110	14	267	24	50	27	8	4
S40-26	25A	40	65	100	460	180	225	65	14	125	95	320	250	110	14	267	24	50	27	8	4
S40-32	35	40	65	125	470	200	250	65	14	125	95	345	280	110	14	342	32	80	35	10	4
S40-32H	45	40	65	125	526	200	250	65	14	125	95	345	280	110	14	367	42	110	45	12	4
S50-13	25	50	65	100	360	132	160	50	14	100	70	240	190	100	14	267	24	50	27	8	4
S50-16	25A	50	65	100	360	160	180	50	14	100	70	265	212	110	14	267	24	50	27	8	4
S50-20	25	50	65	100	360	160	200	50	14	100	70	265	212	110	14	267	24	50	27	8	4
S50-26	25A	50	65	100	465	180	225	65	14	125	95	320	250	110	14	267	24	50	27	8	4
S50-26H	35	50	65	100	470	180	225	65	14	125	95	320	250	110	14	344	32	80	35	10	4
S50-32	35	50	65	125	470	225	280	65	18	125	95	345	280	110	14	342	32	80	35	10	4
S50-32H	45	50	65	125	526	225	280	65	18	125	95	345	280	110	14	367	42	110	45	12	4
S65-13	25	65	80	100	360	160	180	65	14	125	95	280	212	110	14	267	24	50	27	8	4
S65-16	25A	65	80	100	360	160	200	65	14	125	95	280	212	110	14	267	24	50	27	8	4
S65-20	25	65	80	105	360	180	225	65	14	125	95	320	250	110	14	267	24	50	27	8	4
S65-20H	35	65	80	105	465	180	225	65	14	125	95	320	250	110	14	339	32	80	35	10	4
S65-26	35	65	80	100	470	200	250	80	15	160	120	360	280	110	18	342	32	80	35	10	4
S65-32	35	65	80	125	470	225	280	80	18	160	120	400	315	110	18	342	32	80	35	10	4
S65-32H	45	65	80	125	526	225	280	80	18	160	120	400	315	110	18	367	42	110	45	12	4
S80-16	25A	80	100	125	360	180	225	65	14	125	95	320	250	110	14	267	24	50	27	8	4
S80-20	35	80	100	125	470	180	250	65	15	125	95	345	280	110	14	342	32	80	35	10	4
S80-26	35	80	100	125	470	200	280	80	15	160	120	400	315	110	18	342	32	80	35	10	4
S80-32	35	80	100	125	470	250	315	80	16	160	120	400	315	110	18	342	32	80	35	10	4
S80-32H	45	80	100	125	526	250	315	80	16	160	120	400	315	110	18	367	42	110	45	12	4
S80-40	45	80	100	125	530	280	355	83	18	160	120	440	340	110	18	370	42	110	45	12	4
S100-16	35	100	125	125	470	200	250	80	15	160	120	360	280	110	18	342	32	80	35	10	4
S100-20	35	100	125	125	470	200	280	80	16	160	120	360	280	110	18	342	32	80	35	10	4
S100-26	35	100	125	140	470	225	280	80	16	160	120	400	315	110	18	342	32	80	35	10	4
S100-32	35	100	125	140	470	250	315	80	16	160	120	400	315	110	18	342	32	80	35	10	4
S100-32H	45	100	125	140	526	250	315	80	16	160	120	400	315	110	18	367	42	110	45	12	4
S100-40	45	100	125	140	530	280	355	100	20	200	150	500	400	110	23	370	42	110	45	12	4
S125-20	35	125	150	145	470	250	315	80	16	160	120	400	315	110	18	342	32	80	35	10	4
S125-26	35	125	150	140	470	250	355	80	16	160	120	400	315	110	18	342	32	80	35	10	4
S125-26H	45	125	150	140	524	250	355	80	16	160	120	400	315	110	18	365	42	110	45	12	-
S125-32	45	125	150	140	530	280	355	100	18	200	150	500	400	110	23	370	42	110	45	12	4
S125-40	45	125	150	160	530	315	400	100	18	200	150	500	400	110	23	370	42	110	45	12	4
S150-20	35	150	200	160	497	280	400	100	18	200	150	400	315	110	23	367	32	80	35	10	4
S150-26	45	150	200	160	530	250	355	100	18	200	150	450	350	110	23	370	42	110	45	12	4
S150-32	45	150	200	160	530	280	400	100	18	200	150	550	450	110	23	370	42	110	45	12	4
S150-40	45	150	200	160	530	315	450	100	18	200	150	550	450	110	23	370	42	110	45	12	4
S200-26	45	200	250	180	555	315	450	100	20	200	150	550	450	110	28	392	42	110	45	12	4
S200-32	55	200	250	180	670	315	480	120	20	220	170	600	480	110	28	505	48	110	51	14	4
S200-40	55	200	250	180	670	335	480	120	20	220	170	600	480	110	28	505	48	110	51	14	4
S250-32	55	250	300	220	691	355	520	150	26	250	200	660	510	110	28	525	48	110	51	14	4
S250-40	55	250	300	220	682	400	560	150	26	250	200	660	510	110	28	516	48	110	51	14	4

Flange dimensions and drilling according to ISO2084 16BAR (BS4504-1969 TABLE 16/11)  
Holes-Equally space straddling pump centreline

PN16											
D1/D2	32	40	50	65	80	100	125	150	200	250	300
ØD	140	150	165	185	200	220	250	285	340	405	460
ØK	100	110	125	145	160	180	210	240	295	350	410
d <sub>2</sub> x number	Ø18 x 4	Ø18 x 4	Ø18 x 4	Ø18 x 4	Ø18 x 8	Ø18 x 8	Ø18 x 8	Ø22 x 8	Ø22 x 12	Ø26 x 12	Ø26 x 12

