



## Horizontal Stainless Steel Centrifugal Pumps



# SHINDO HAS CONSTANTLY DEVELOP THE CREDIBILITY TO SERVE THE INDUSTRY EFFICIENTLY.

SHINDO IS COMMITTED TO PROVIDE HIGH VALUE-ADDED PRODUCTS IN MINIMUM LEAD-TIME AND AT COST EFFECTIVE PRICING, TO HELP CUSTOMERS ACHIEVE ZERO DOWNTIME, PRODUCTION TARGET AND HELP ENHANCE A SAFER ENVIRONMENT.



# DZ(S) SERIES

## HORIZONTAL STAINLESS STEEL CENTRIFUGAL PUMPS

### PAGE CONTENTS

01	APPLICATION   MODEL CODE
02	CONSTRUCTION DESIGN
03	GENERAL ARRANGEMENT DRAWING
04	SELECTION CHART
05	PERFORMANCE CURVE (FOR DZ50-32 (S))
06	PERFORMANCE CURVE (FOR DZ65-40 (S))
07	PERFORMANCE CURVE (FOR DZ65-50 (S))
08	PERFORMANCE CURVE (FOR DZ80-65 (S))
09	PERFORMANCE CURVE (FOR DZ100-80-160(S))
10	PERFORMANCE CURVE (FOR DZ100-80-200(S))
11	DIMENSIONAL DRAWING (FOR DZ50 (S) TO DZ80 (S))
12	DIMENSIONAL DRAWING (FOR DZ100 (S))
13	TABLE OF DIMENSIONS

## Application

Shindo Horizontal Stainless Steel Centrifugal Pumps, DZ(S) Series are design for following applications:

- ✕ Cooling Water System
- ✕ Domestic Water Supply
- ✕ Sprinkler System
- ✕ Agriculture
- ✕ Boosting & Circulation System
- ✕ Water Treatment
- ✕ Medicine & Sanitation
- ✕ Petrochemical Industry
- ✕ Fire Fighting System

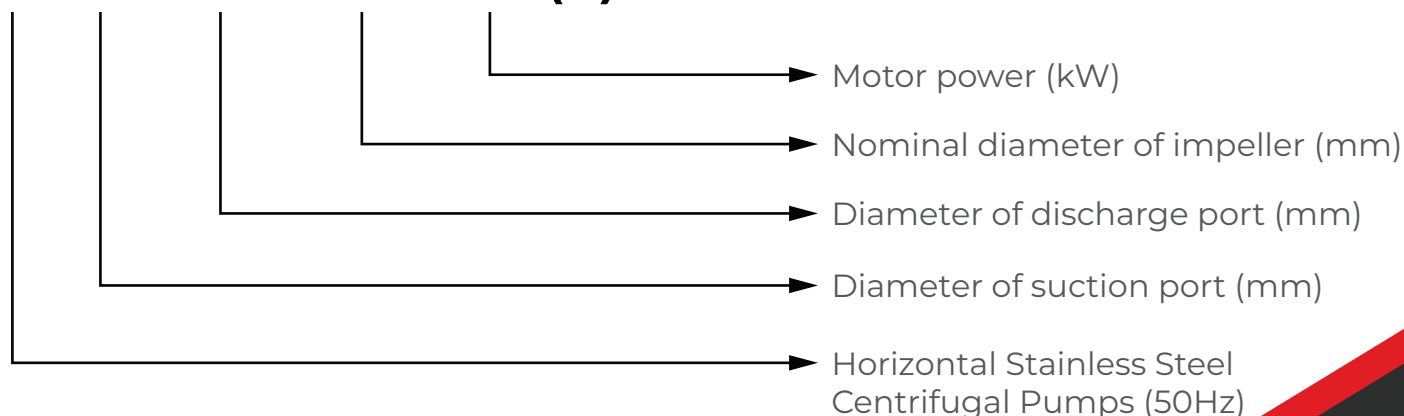
Performance range for DZS series:

- ✕ Max. Capacity (Q) = 200m<sup>3</sup>/hr
- ✕ Max. Head (H) = 64m
- ✕ Max. Operating Pressure = 10 bar
- ✕ Max. Ambient Temperature = +40°C
- ✕ Liquid Temperature = -20°C to +80°C



## Model Code

**DZ 50 - 32 - 200 /5.5 (S)**



# Construction Design

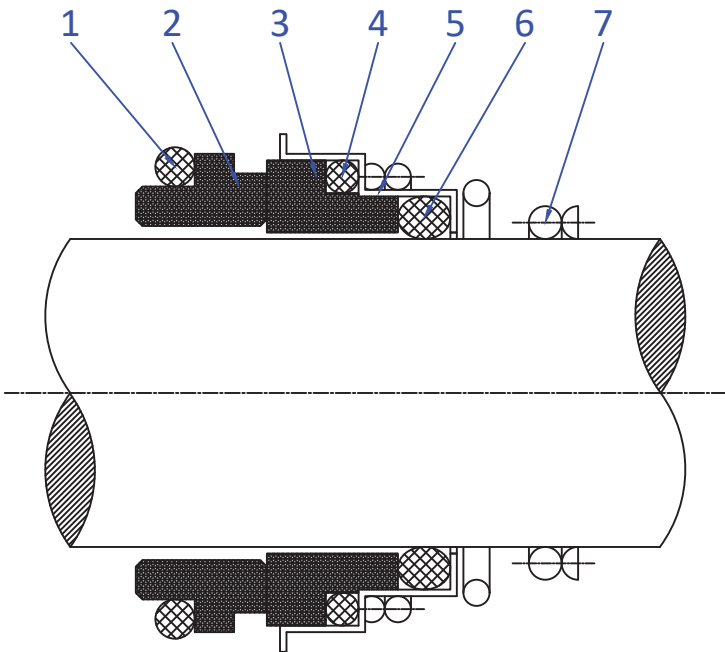
## Hydraulic Parts

- ✂ Pump casing, impeller and shaft are made up of stainless steel (SS304).
- ✂ The standard material of mechanical seal is Carbon/Silicon Carbide/NBR.
- ✂ DZ(S) Series are design with axial suction and vertical discharge (Flange type).
- ✂ DZ(S) series dimensions are in compliance with EN733/DIN24255.
- ✂ For mechanical seal assembly dimensions, DZ(S) Series are in compliance with DIN24960/ISO3069.

## Electric Motor

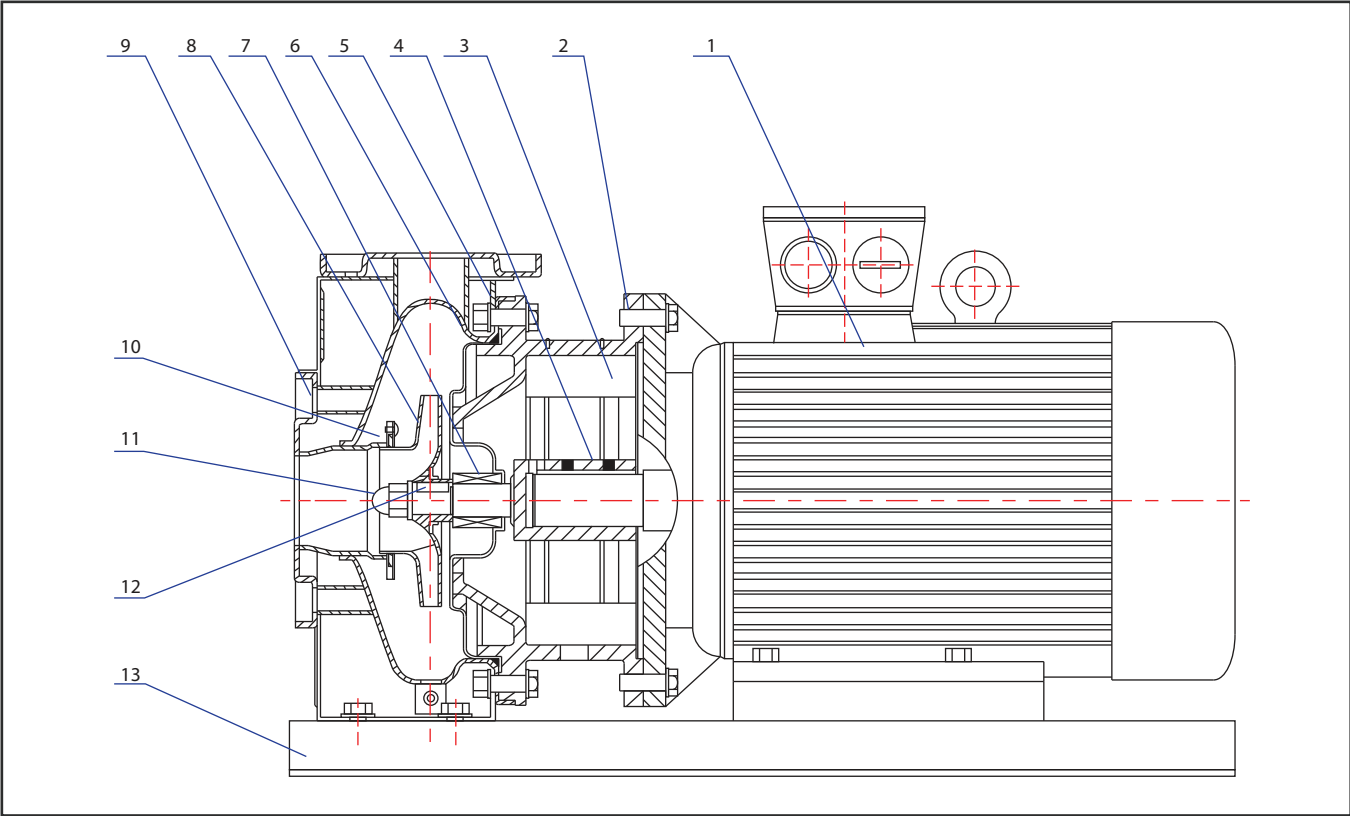
- ✂ The pump is coupled with totally enclosed, fan-cooled squirrel-cage aluminum casing motor (Less than 7.5kW), IEC standard, built-in thermal overload units.
- ✂ Insulation Class: F
- ✂ Enclosure Class: IP55
- ✂ Speed: 2900RPM
- ✂ Standard Voltage: 1 x 220-240V, 50Hz  
3 x 220-240V/380-415V, 50Hz
- ✂ Sound Level: <75dB(A)

## Material of Mechanical Seal



No.	Name	Qty	Material
1	O-Ring	1	NBR or FPM
2	Stationary Seats	1	Carbon
3	Seal Faces	1	Silicon Carbide
4	O-Ring	1	NBR or FPM
5	Seal Faces Base	1	Stainless Steel
6	O-Ring	1	NBR or FPM
7	Spring	1	Stainless Steel

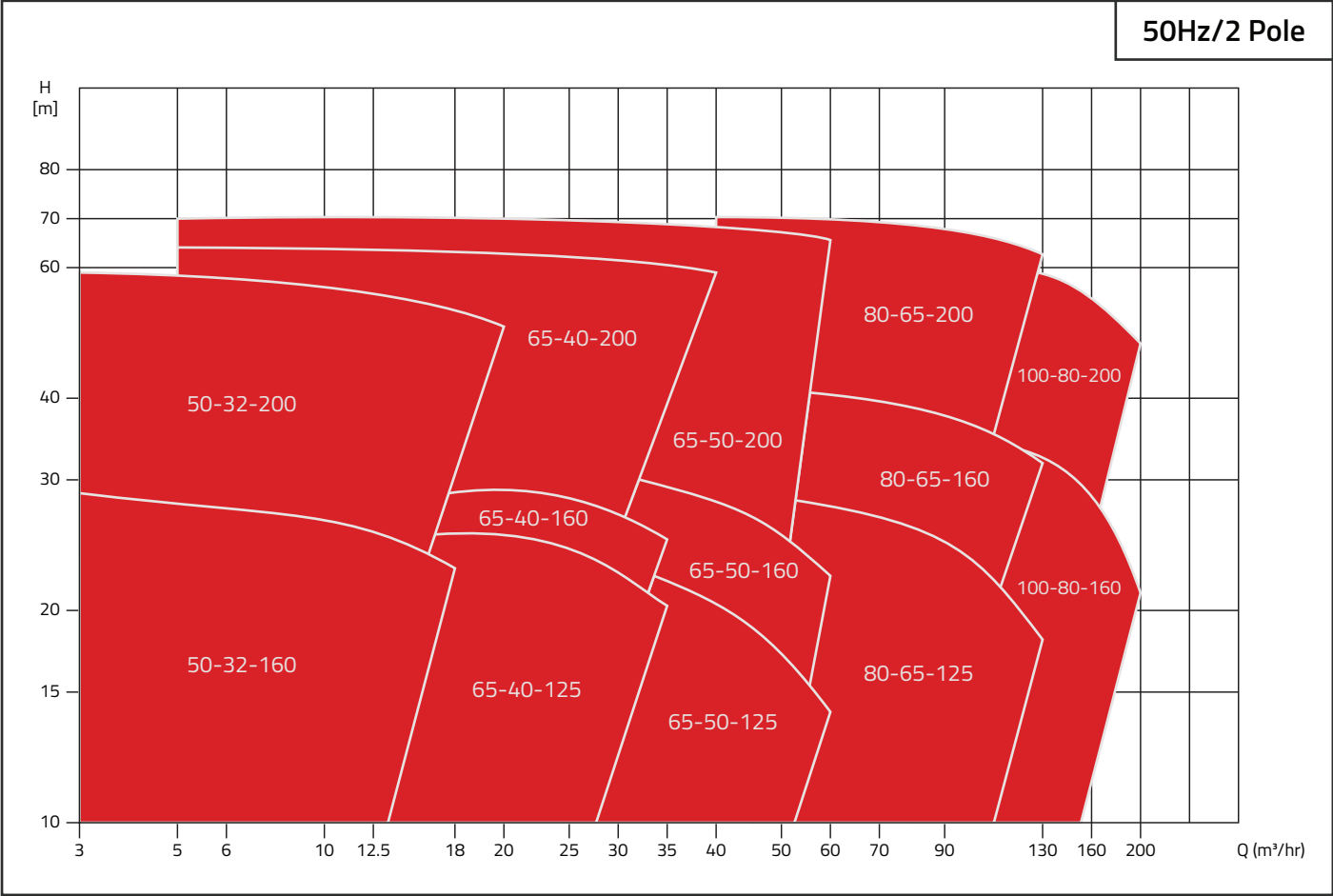
# General Arrangement Drawing



Part No.	Name	Material
1	Motor	
2	Motor Bracket	Cast Iron (ASTM25B)
3	Guard Plate	Stainless Steel (SS304)
4	Stub Shaft	Stainless Steel (SS420/SS304)
*5	Rubber Parts	EPDM
*6	Lining of Pump head	Stainless Steel (SS304)
*7	Mechanical Seal	Carbon/Silicon Carbide/NBR
*8	Impeller	Stainless Steel (SS304)
9	Casing	Stainless Steel (SS304)
*10	Wear Ring	PTFE
*11	Impeller Nut	Stainless Steel (SS304)
*12	Impeller Key	Stainless Steel (SS304)
13	Base Plate	Carbon Steel (ASTMA570)

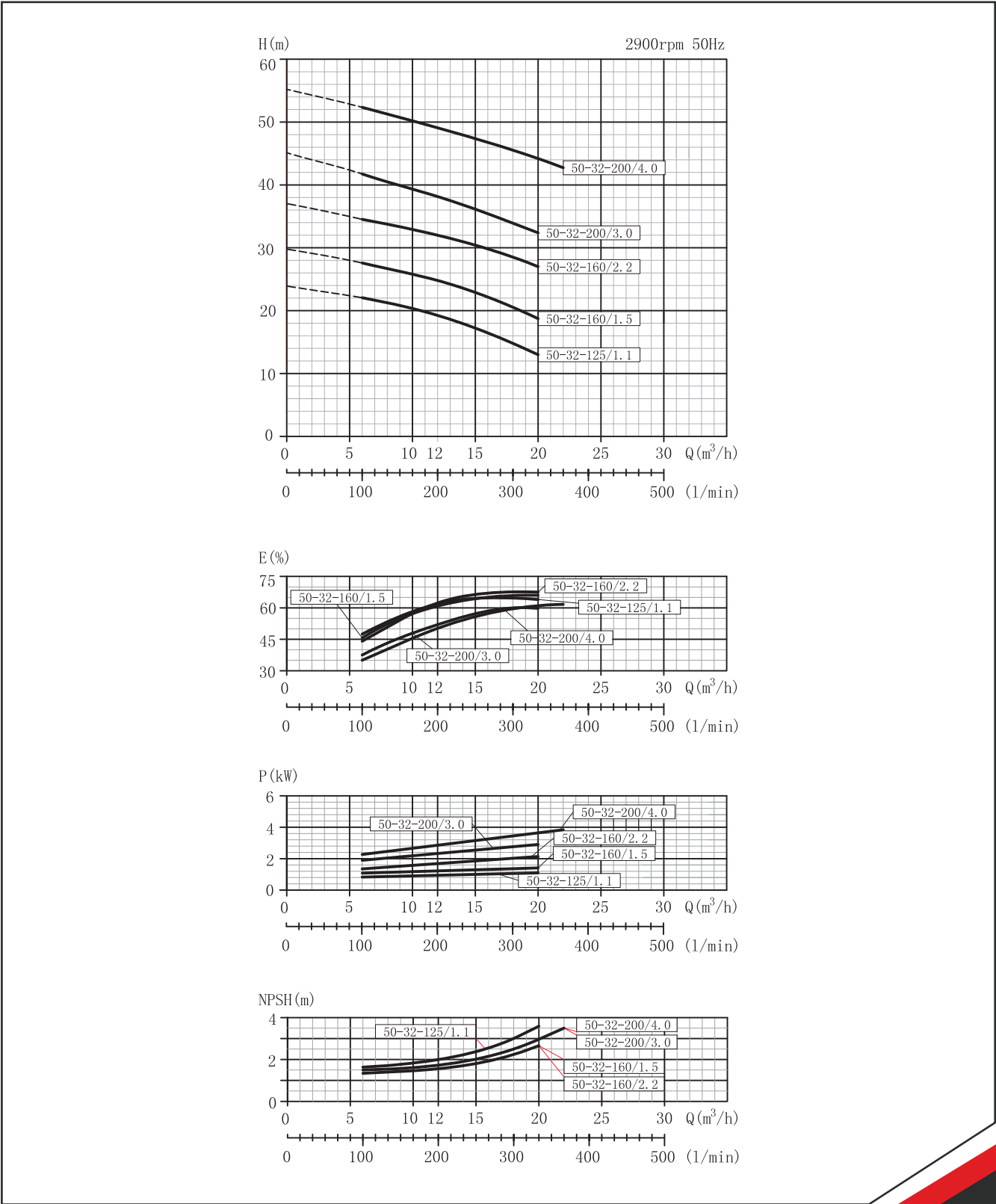
\*Recommended Spare Parts

# Selection Chart



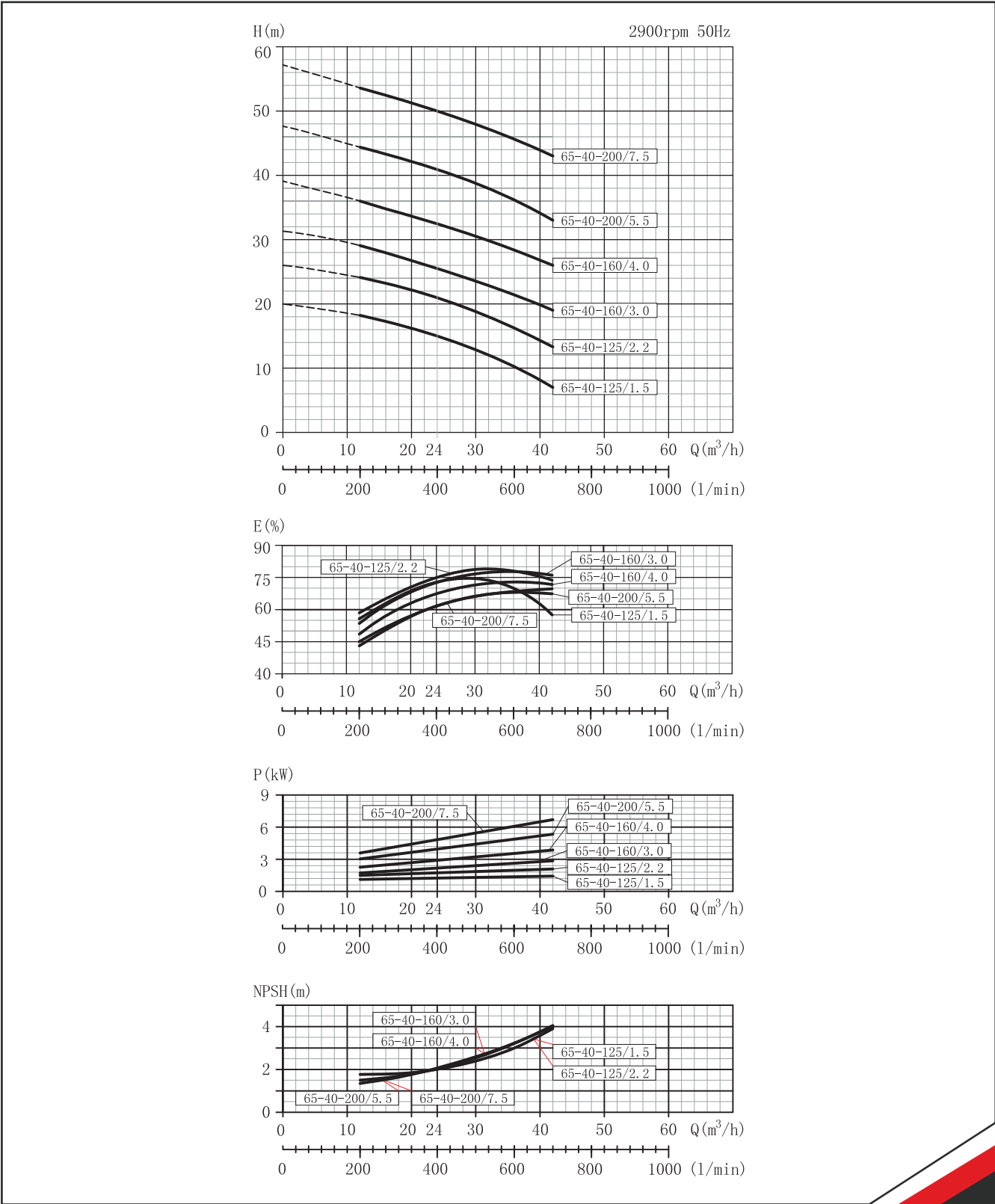
# Performance Curve

For DZ50-32 (S)



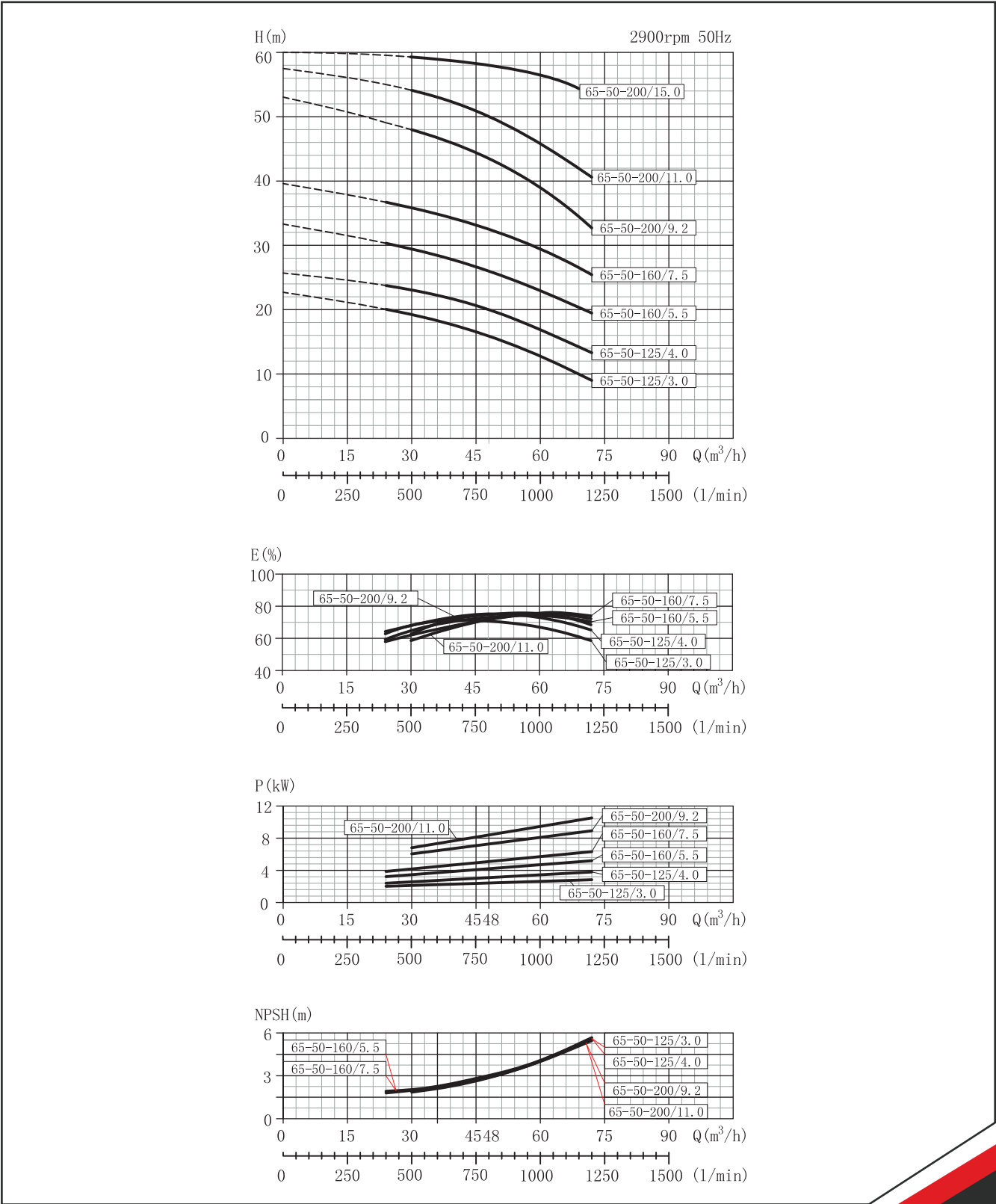
# Performance Curve

For DZ65-40 (S)



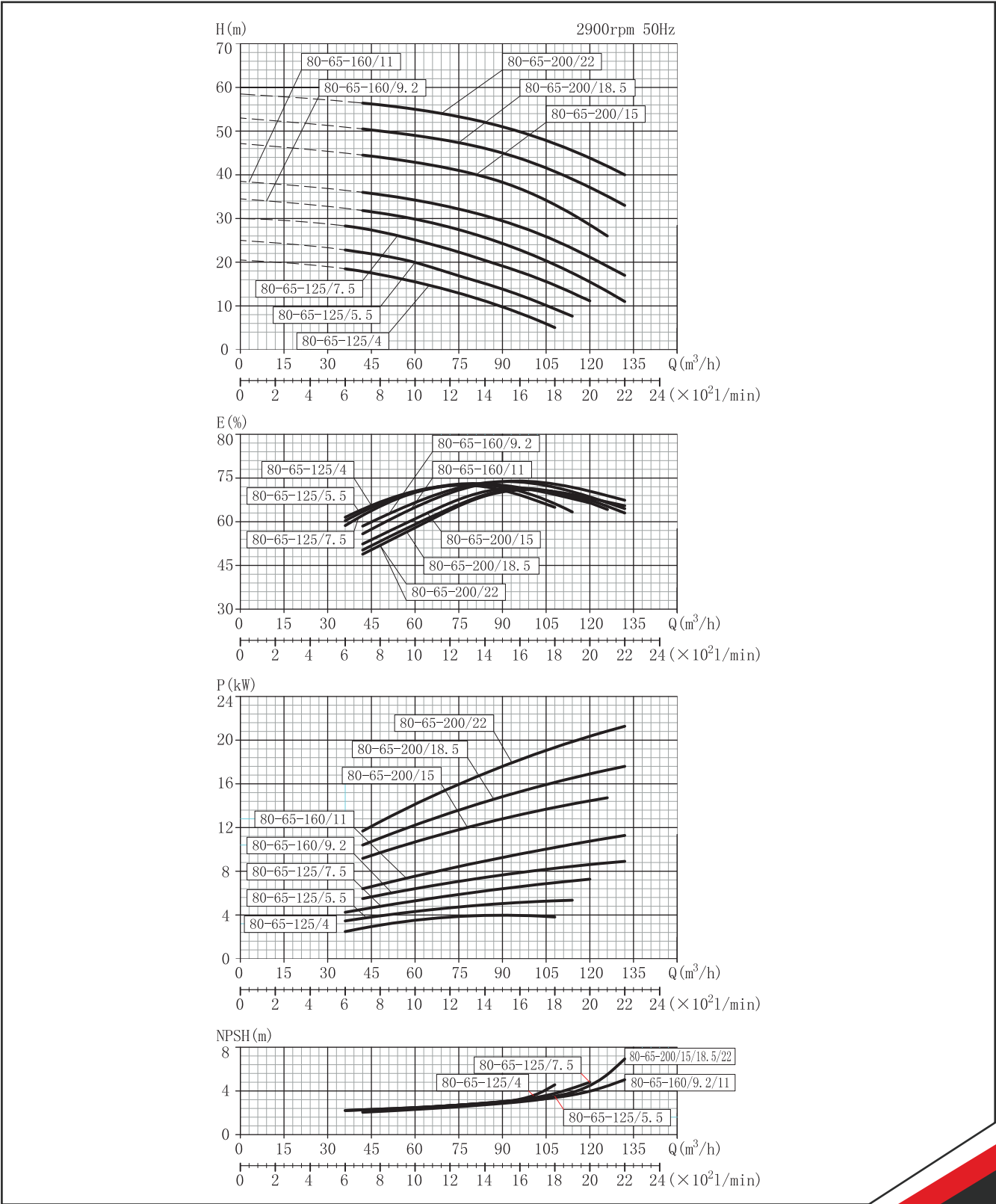
# Performance Curve

For DZ65-50 (S)



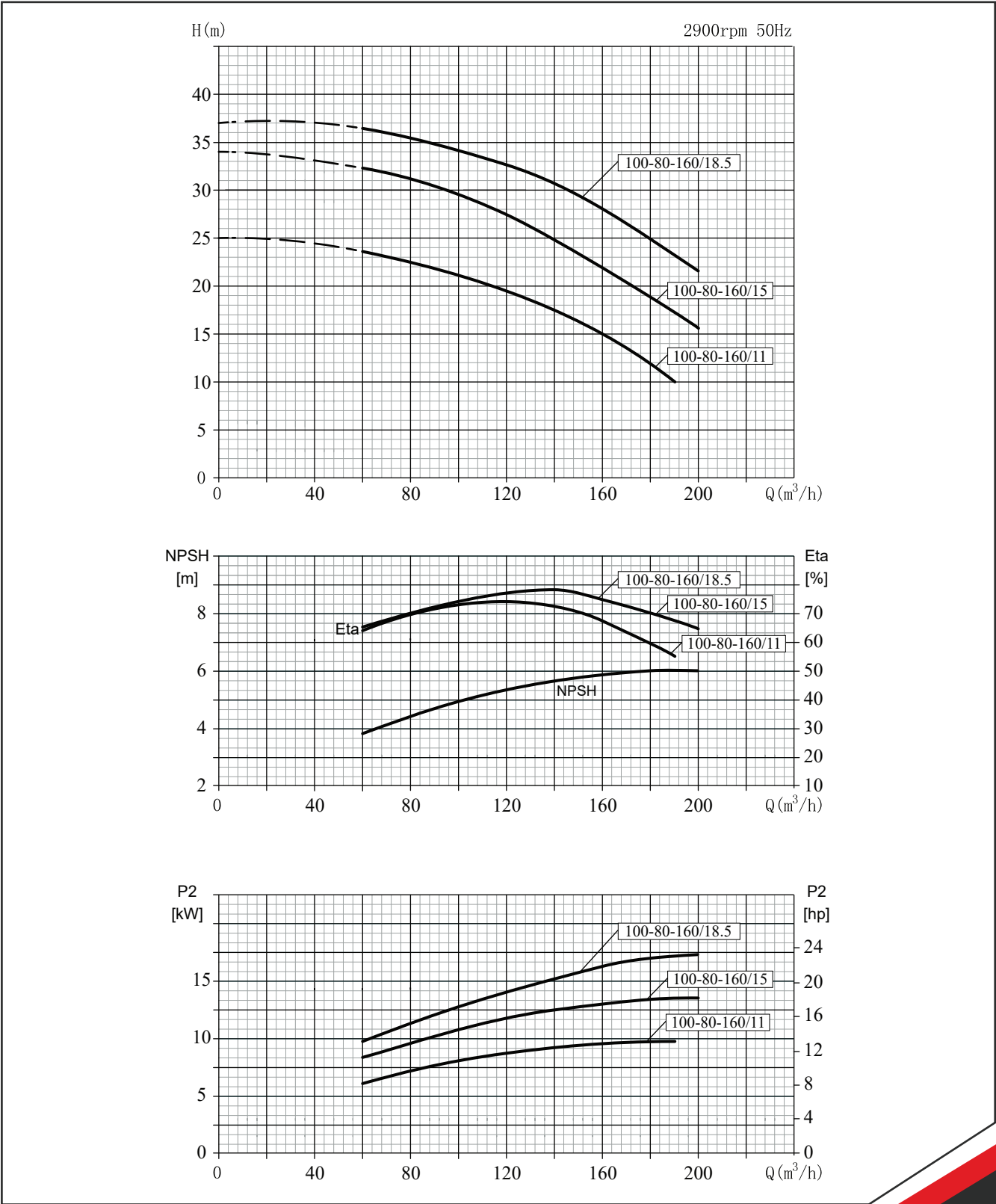
# Performance Curve

For DZ80-65 (S)



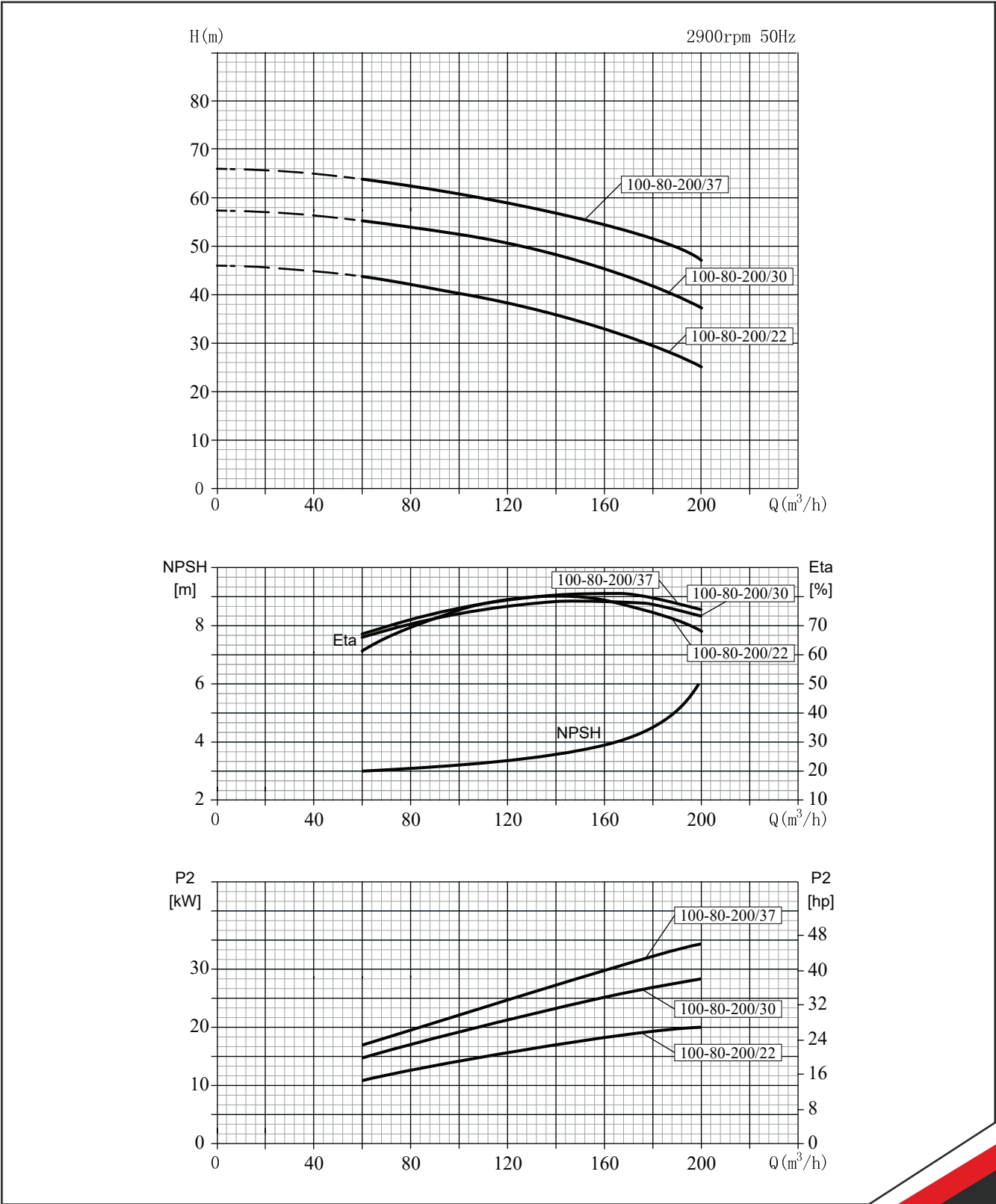
# Performance Curve

For DZ100-80-160 (S)



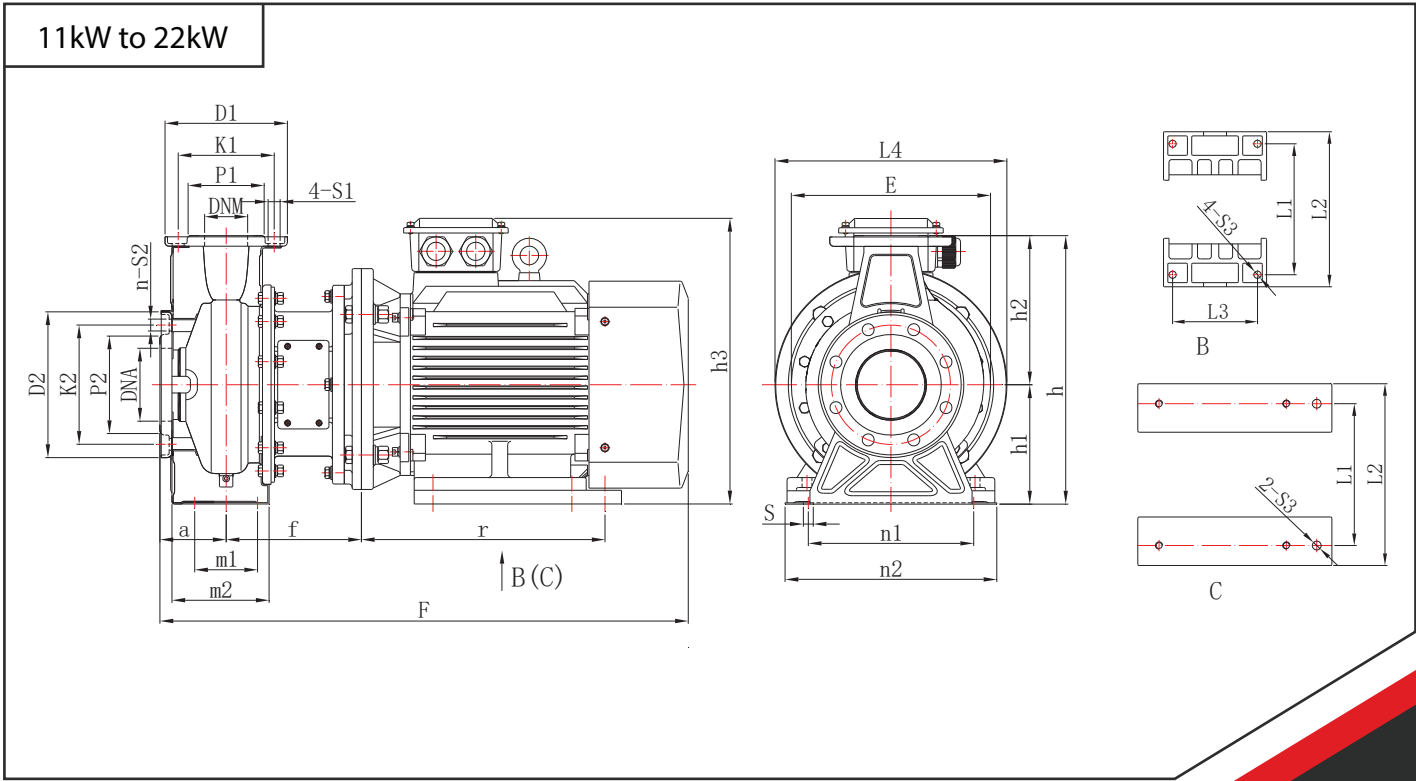
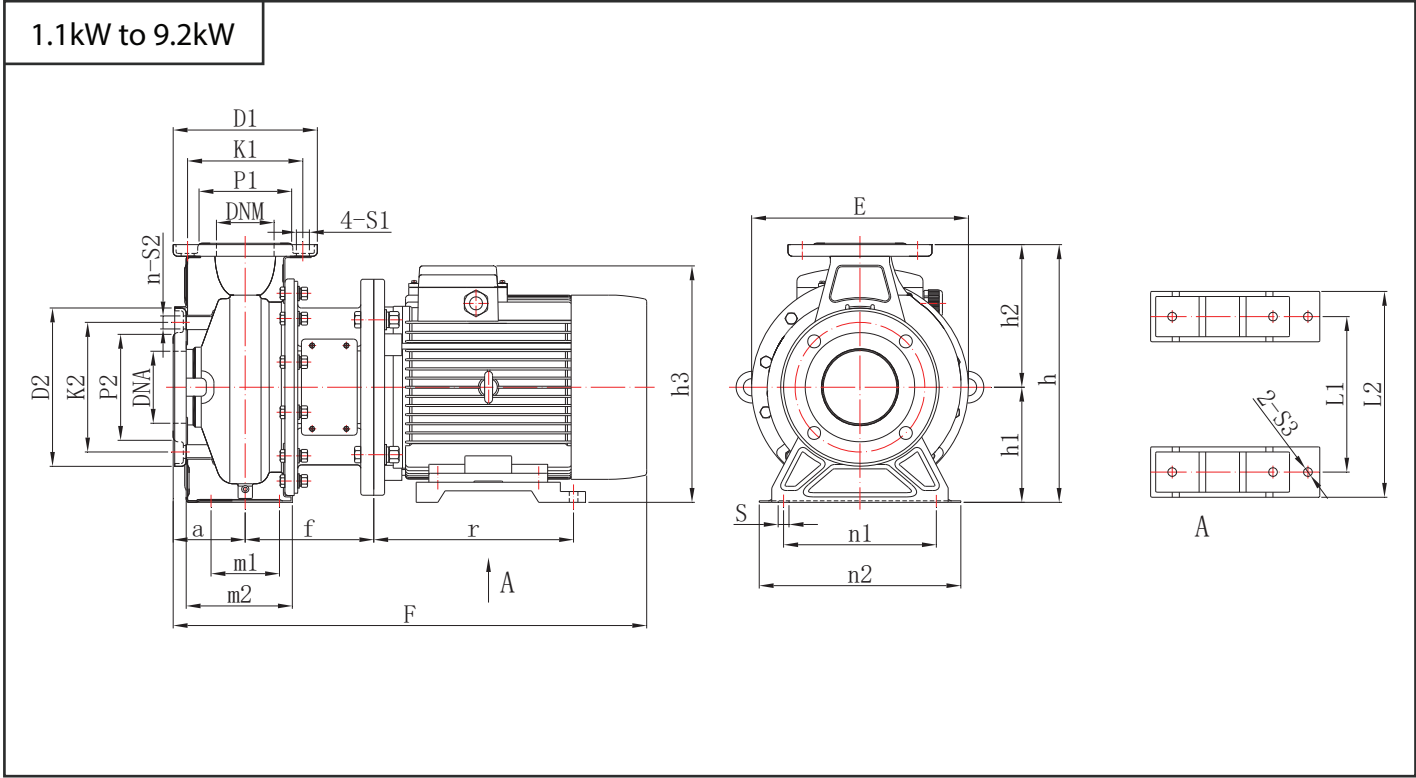
# Performance Curve

For DZ100-80-200 (S)



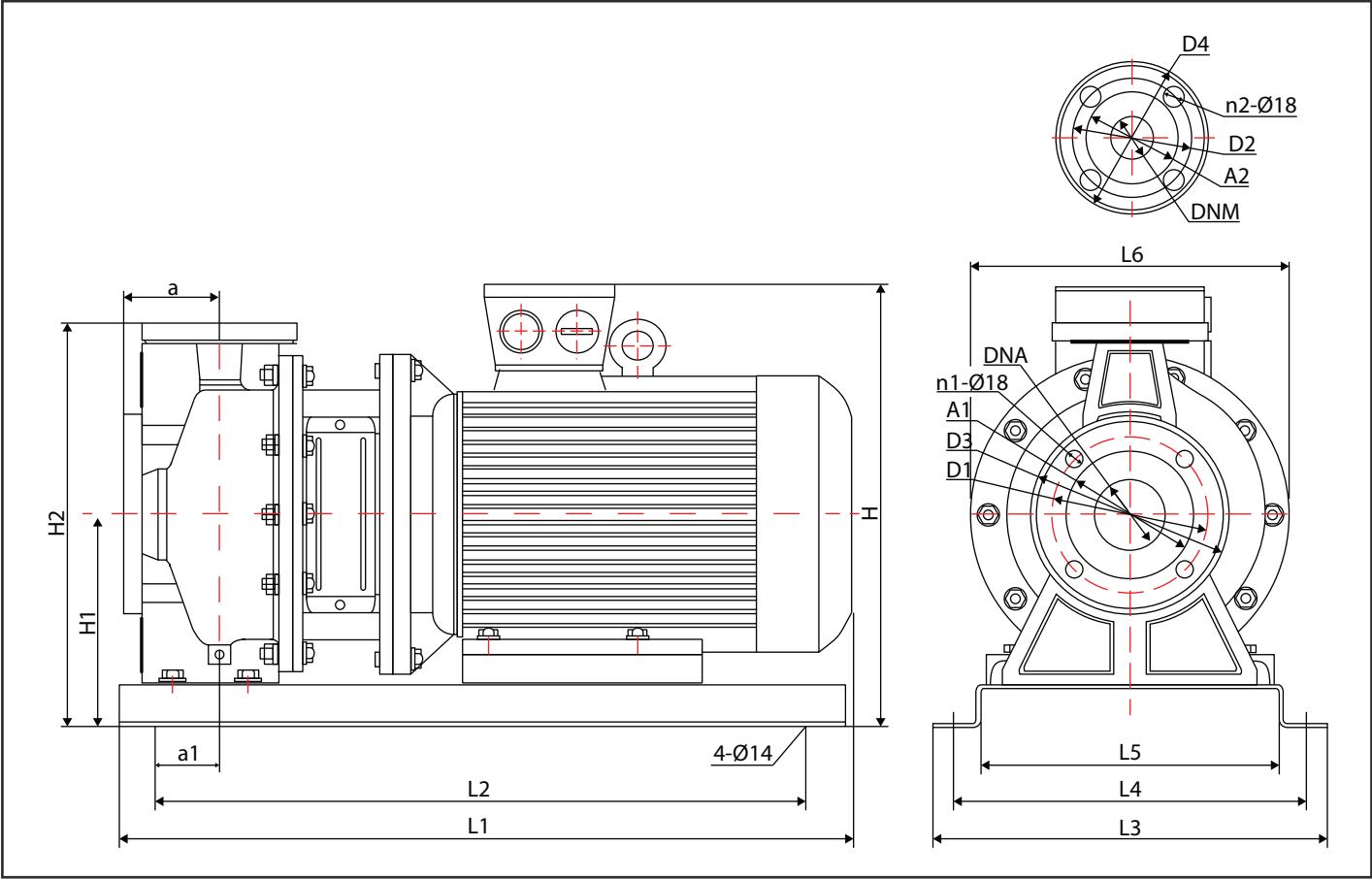
# Dimensional Drawing

For DZ50 (S) to DZ80 (S)



# Dimensional Drawing

For DZ100 (S)



# Table of Dimensions

## DZ50 (S) to DZ80 (S)

Model	E	F	h	h1	h2	h3	a	m1	m2	n1	n2	S	L1	L2	L3	S3	r	f	D2	K2	P2	S2	n	D1	K1	P1	S1	DNA	DNM	kg
DZ50-32-125/1.1(S)	209	444	252	112	140	221	80	70	122	140	190	15	125	165	\	12	186	128	165	125	99	18	4	140	100	76	18	50	32	26
DZ50-32-160/1.5(S)	244	488	292	132	160	254	80	70	123	190	240	15	140	186	\	12	212	130	165	125	99	18	4	140	100	76	18	50	32	36.3
DZ50-32-160/2.2(S)	244	488	292	132	160	254	80	70	123	190	240	15	140	186	\	12	212	130	165	125	99	18	4	140	100	76	18	50	32	37.5
DZ50-32-200/3.0(S)	295	547	340	160	180	287	80	70	124	190	240	15	160	212	\	12	248	142	165	125	99	18	4	140	100	76	18	50	32	51.3
DZ50-32-200/4.0(S)	295	527	340	160	180	309	80	70	124	190	240	15	190	252	\	12	255	142	165	125	99	18	4	140	100	76	18	50	32	53
DZ65-40-125/1.5(S)	209	486	252	112	140	234	80	70	121	160	210	15	140	211	\	12	214	128	185	145	118	18	4	150	110	99	18	65	40	33
DZ65-40-125/2.2(S)	209	486	252	112	140	234	80	70	121	160	210	15	140	211	\	12	214	128	185	145	118	18	4	150	110	99	18	65	40	36.3
DZ65-40-160/3.0(S)	244	547	292	132	160	259	80	70	123	190	240	15	160	212	\	12	248	142	185	145	118	18	4	150	110	99	18	65	40	48
DZ65-40-160/4.0(S)	244	527	292	132	160	281	80	70	123	190	240	15	190	252	\	12	255	142	185	145	118	18	4	150	110	99	18	65	40	52.8
DZ65-40-200/5.5(S)	300	644	340	160	180	327	100	70	146	212	265	15	216	286	\	12	278	165	185	145	118	18	4	150	110	84	18	65	40	79.5
DZ65-40-200/7.5(S)	300	644	340	160	180	327	100	70	146	212	265	15	216	286	\	12	278	165	185	145	118	18	4	150	110	84	18	65	40	83.5
DZ65-50-125/3.0(S)	250	577	292	132	160	259	100	70	148	190	240	15	160	212	\	12	245	152	185	145	132	18	4	165	125	118	18	65	50	48
DZ65-50-125/4.0(S)	250	557	292	132	160	281	100	70	148	190	240	15	190	252	\	12	255	152	185	145	132	18	4	165	125	118	18	65	50	52.8
DZ65-50-160/5.5(S)	300	644	340	160	180	327	100	70	150	212	265	15	216	286	\	12	278	165	185	145	132	18	4	165	125	118	18	65	50	77.7
DZ65-50-160/7.5(S)	300	644	340	160	180	327	100	70	150	212	265	15	216	286	\	12	278	165	185	145	132	18	4	165	125	118	18	65	50	79.7
DZ65-50-200/9.2(S)	300	651	360	160	200	327	100	70	146	212	265	15	216	286	\	12	278	172	185	145	132	18	4	165	125	99	18	65	50	90
DZ65-50-200/11(S)	300	792	360	160	200	411	100	70	146	212	265	15	254	314	210	15	318	198	185	145	132	18	4	165	125	99	18	65	50	149
DZ65-50-200/15(S)	\	790	340	160	180	416	100	70	\	212	240	\	\	\	\	\	\	\	185	145	118	18	4	160	125	98	18	65	50	171
DZ80-65-125/4.0(S)	245	556	340	160	180	309	100	95	155	212	280	15	190	252	\	12	255	151	200	160	132	18	4	185	145	118	18	80	65	61
DZ80-65-125/5.5(S)	245	644	340	160	180	327	100	95	155	212	280	15	216	286	\	12	278	164	200	160	132	18	4	185	145	118	18	80	65	85
DZ80-65-125/7.5(S)	245	644	340	160	180	327	100	95	155	212	280	15	216	286	\	12	278	164	200	160	132	18	4	185	145	118	18	80	65	88
DZ80-65-160/9.2(S)	301	658	360	160	200	327	100	95	155	212	280	15	216	286	\	12	278	179	200	160	132	18	4	185	145	118	18	80	65	93
DZ80-65-160/11(S)	301	840	360	160	200	412	100	95	155	212	280	15	254	314	210	15	362	205	200	160	132	18	4	185	145	118	18	80	65	140
DZ80-65-200/15(S)	301	840	405	180	225	432	100	95	155	250	320	15	254	348	\	15	368	205	200	160	132	18	4	185	145	118	18	80	65	152
DZ80-65-200/18.5(S)	301	840	405	180	225	432	100	95	155	250	320	15	254	348	\	15	410	205	200	160	132	18	4	185	145	118	18	80	65	162
DZ80-65-200/22(S)	301	840	405	180	225	432	100	95	155	250	320	15	254	348	\	15	410	205	200	160	132	18	4	185	145	118	18	80	65	-

\*\*\*All dimensions are in mm unless specified.

## DZ100 (S)

Model	A1	A2	D1	D2	D3	D4	n1	n2	a	a1	H	H1	H2	L1	L2	L3	L4	L5	L6	DNA	DNM	kg
DZ100-80-160/11(S)	150	130	180	160	220	200	8	8	125	75	476	220	445	830	730	420	380	330	350	100	80	163
DZ100-80-160/15(S)	150	130	180	160	220	200	8	8	125	75	476	220	445	830	730	420	380	330	350	100	80	173
DZ100-80-160/18.5(S)	150	130	180	160	220	200	8	8	125	75	476	220	445	870	770	420	380	330	350	100	80	185
DZ100-80-200/22(S)	150	130	180	160	220	200	8	8	125	75	500	220	470	915	810	455	415	365	350	100	80	223
DZ100-80-200/30(S)	150	130	180	160	220	200	8	8	125	75	550	240	490	985	880	495	455	405	400	100	80	295
DZ100-80-200/37(S)	150	130	180	160	220	200	8	8	125	75	550	240	490	985	880	495	455	405	400	100	80	315

\*\*\*All dimensions are in mm unless specified.

