



Submersible Sewage Pumps



SHINDO HAS CONSTANTLY DEVELOP THE CREDIBILITY TO SERVE THE INDUSTRY EFFICIENTLY.

SHINDO IS COMMITTED TO PROVIDE HIGH VALUE-ADDED PRODUCTS IN MINIMUM LEAD-TIME AND AT COST EFFECTIVE PRICING, TO HELP CUSTOMERS ACHIEVE ZERO DOWNTIME, PRODUCTION TARGET AND HELP ENHANCE A SAFER ENVIRONMENT.



HORIZONTAL SINGLE STAGE CENTRIFUGAL PUMPS

PAGE CONTENTS

01	APPLICATION MODEL CODE
02	CONSTRUCTION DESIGN
04	PRODUCT DATA (2P 0.75-1.5kW 50Hz)
06	PRODUCT DATA (2P 0.75-1.5kW 50Hz Flange Type)
10	PRODUCT DATA (2P 2.2-5.5kW 50Hz)
14	PRODUCT DATA (2P 7.5-11kW 50Hz)
18	PRODUCT DATA (4P 2.2-3.7kW 50Hz)
22	PRODUCT DATA (4P 5.5-7.5kW 50Hz)
26	PRODUCT DATA (4P 11-22kW 50Hz)
30	PRODUCT DATA (4P 30-45kW 50Hz)
34	PRODUCT DATA (4P 55-75kW 50Hz) & (6P 45-55kW 50Hz)
38	AUTO-COUPLING DATA

Application

Shindo B Series Submersible Sewage Pumps adopts the advantages of domestic and foreign products with comprehensive improvements in hydraulic mould, mechanical structure, sealing, cooling, protection and etc. This energy-saving products are effective for pumping solid wastes and keeping the long fiber from winding with high efficiency and high reliability. Shindo B Series is suitable to be use with the following applications:

- ▣ **Industry and Residential Building Waste Water Discharge**
- ▣ **Domestic Sewage and Storm Water Drainage**
- ▣ **Sewage Treatment Plant and Farm Sewage Discharge**
- ▣ **Construction Site, Factory and Mine Muddy Water Pumping**
- ▣ **Agriculture and Aquaculture Water Pumping**

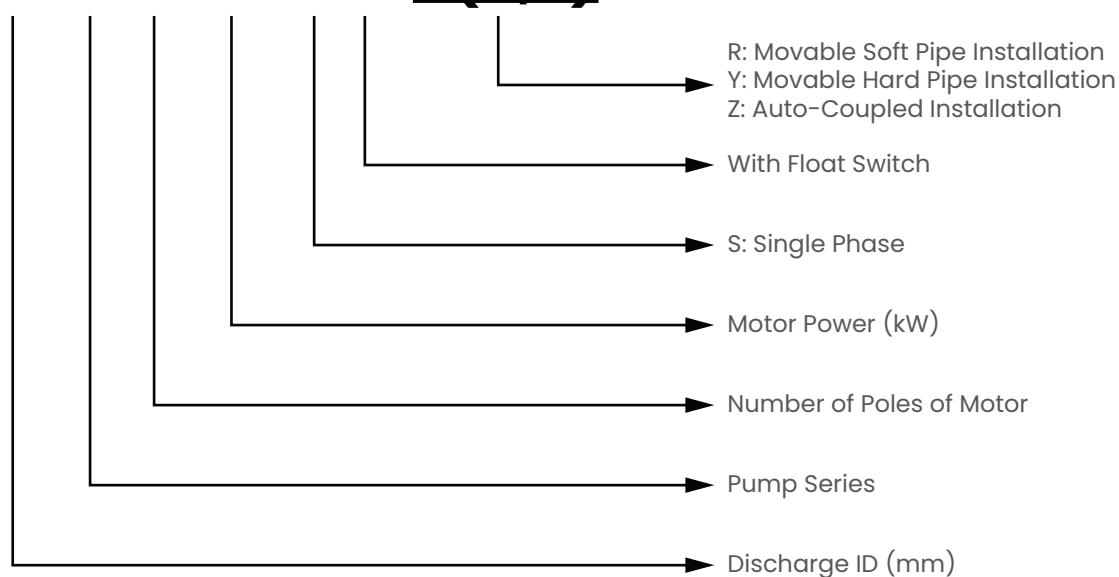
Performance range for B series:

- ▣ Max. Capacity (Q) = 1900m³/hr
- ▣ Max. Head (H) = 61m
- ▣ Max. Liquid Temperature = +40°C
- ▣ Max. Immersion Depth = 20m
- ▣ Allowable Range of Liquid pH Number = 6 to 10



Model Code

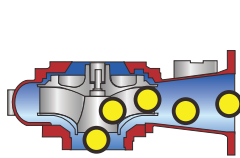
50 B 2 1.5 S F R(Y,Z)



Construction Design

1. Pump Body/Impeller

Pump body and impeller are well matched by the repeated modifications and designs with computer aided design technology. Hydraulic model is highly efficient, curve of output is flat which can't easily lead to overload. The impeller is strictly balanced so as to reduce vibration to the minimum degree and extend the life of bearing and mechanical seal to the greatest extent. The pump incorporates a channel impeller developed exclusively for sewage pumps. The impeller has a wide channel extending from inlet to exit which prevents internal clogging by solids sucked in the inlet.



– Channel Type Impeller

2. Motor

Motor with protection grade IP68 can work under water which making the best cooling effect. It is more durable than normal motor.

3. Mechanical Seal

Mechanical seal of motor is made of high quality double mechanical seal or 2 sets of individual single mechanical seal which makes reliable sealing line of defense. Under normal usage, non-failure operation time exceeds 8000 hours.

4. Bearing

Bearings are all high quality deep groove ball bearings which constitute reliable support for shaft of motor and pump, leads larger bearing margin of radial force, axial force and other forces produced when the pump is working and make sure smooth running and long-time life of the whole set.

5. Cable and Seal

- i. Cable applied is soft and sewerage water tolerable with excellent mechanical seal strength and oil resistant ability. Cross section of cable and capacity is selected in condition of 40°C (regularly 25°C) and long time continuous working. So it is safe and long life in usual condition.
- ii. Rubber sleeve of cable has impact seal with motor gland which prevents medium from getting into motor through cable sleeve.
- iii. There is resin sealing between cable sleeve and wire core. Even after rubber sleeve is cutted, it can still prevent medium from getting into motor through cable sleeve.

6. Motor Casing

Upper cover, up-bearing house, bearing house, motor body, etc. constitute pump casing, every joint of components has reliable static seal. Each unit is checked by strict hydraulic testing making sure there is no leakage.

7. Protection Device

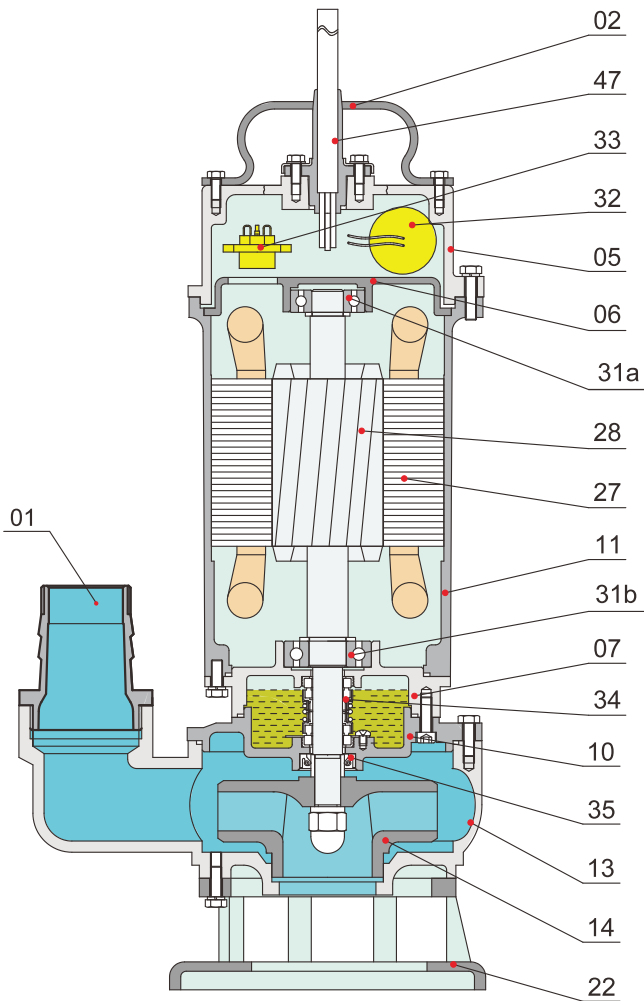
- i. Built-in protection device: Pump $\leq 7.5\text{kW}$ is equipped with built-in protection device, which can prevent burning caused by over-load and missing phase.
- ii. Oil water leakage probe (on option): For 4-poles pump $\geq 5.5\text{kW}$, there can be oil water leakage probe install in oil house to detect the leakage of first mechanical seal (from medium), when the medium is leaked into oil seal and reaches certain proportion, it will send the signal.
- iii. Float switch (on option): For 4-poles pump, $\geq 11\text{kW}$, there can be float switch installed in motor cavity, to test leakage of second mechanical seal, when oil (oil water mixture) is leaked into motor, it will send the signal.
- iv. Overheat protector (on option): The overheat protector can be installed inside the stator winding of motor, when the temperature of winding (or winding is heating caused of other reasons) reaches a specific value, it will send the signal.

Product Data

2P (2850rpm) | 0.75 - 1.5kW | 50Hz

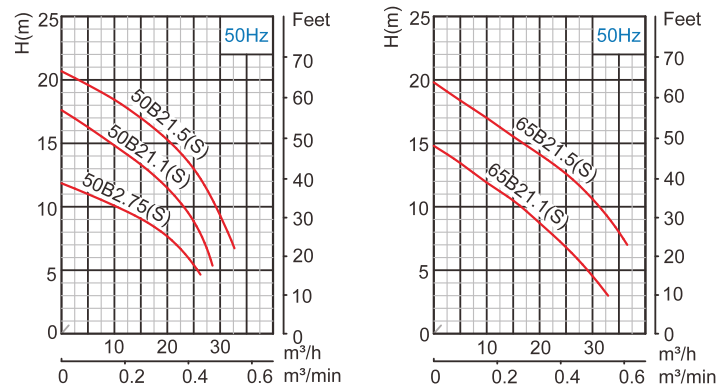
Specification

- Insulation: B
- Protection Class: IP68
- Liquid Temperature: up to 40°C
- Liquid pH: 6-10
- Density of Liquid: 1.3g/cm³
- Power Supply: Three Phase - 415V ±10%, 50Hz
Single Phase - 240V ±10%, 50Hz
- Motor Protection: Built-in
- Capacity: up to 37m³/hr
- Head: up to 21m
- Maximum Immersion Depth: 10m
- Cable Length: 8m



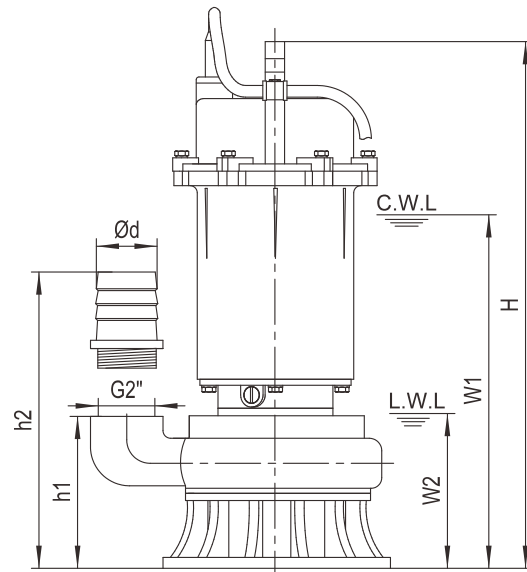
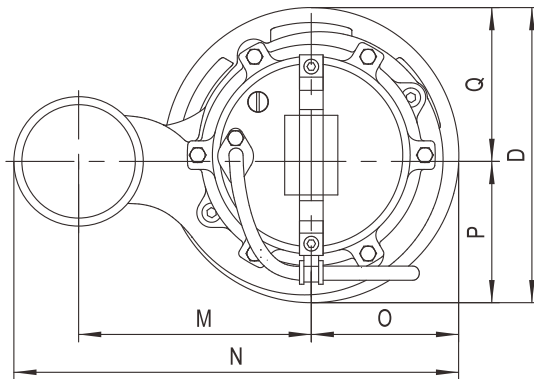
Material of Construction

No.	Part Name	Material
01	Hose Coupling	Cast Iron
02	Handle	Steel
05	Upper Cover	Cast Iron
06	Up-Bearing House	Cast Iron
07	Bearing House	Cast Iron
10	Seal Bracket	Cast Iron
11	Motor Body	Cast Iron
13	Pump Body	Cast Iron
14	Impeller	Cast Iron
22	Seat Assembly	Cast Iron
27	Stator	
28	Rotor	Shaft: AISI304SS
31a	Bearing (Ball Type)	
31b	Bearing (Ball Type)	
32	Capacitor (Single Phase Only)	
33	Motor Protector	
34	Mechanical Seal	SiC-Cer/Carbon-Cer
35	Oil Seal	
47	Cable	



Model	Voltage	Current	Motor Power	Outlet		Rated Capacity	Rated Head	Max. Capacity	Max. Head	Impeller Passage	Cable
	V	A	kW	in	mm	m³/hr	m	m³/hr	m	mm	mm²
50B2.75	415	2	0.75	2	50	10	10	26	12	25	4G1.0
50B2.75S	240	5.2	0.75	2	50	10	10	26	12	25	3G1.0
50B21.1	415	2.8	1.1	2	50	8	15	29	18	20	4G1.0
50B21.1S	240	7.2	1.1	2	50	8	15	29	18	20	3G1.0
65B21.1	415	2.8	1.1	2½	65	15	10	33	15	25	4G1.0
65B21.1S	240	7.2	1.1	2½	65	15	10	33	15	25	3G1.0
50B21.5	415	3.2	1.5	2	50	8	19	33	21	20	4G1.0
50B21.5S	240	10	1.5	2	50	8	19	33	21	20	3G1.0
65B21.5	415	3.2	1.5	2½	65	15	15	37	20	25	4G1.0
65B21.5S	240	10	1.5	2½	65	15	15	37	20	25	3G1.0

C.W.L : Continuous running water level
L.W.L : Lowest running water level



Model	Ød	h1	h2	W1	W2	H	O	P	Q	D	M	N	Packing Dimension	N.W.	G.W.
	mm	mm	mm	mm	mm	mm	mm	mm	mm	mm	mm	mm	mm	kg	kg
50B2.75	50	125	190	300	120	445	90	95	85	180	115	242	470x245x240	18.5	20
50B2.75S	50	125	190	315	120	445	90	95	85	180	115	242	470x245x240	19.5	21
50B21.1	50	150	215	325	140	465	85	90	85	175	130	253	490x255x240	22	23.5
50B21.1S	50	150	215	345	140	485	85	90	85	175	130	253	515x255x240	23	24.5
65B21.1	65	150	220	325	140	465	85	90	85	175	130	253	490x255x240	22	23.5
65B21.1S	65	150	220	345	140	485	85	90	85	175	130	253	515x255x240	23	24.5
50B21.5	50	150	215	345	140	485	85	90	85	175	130	253	510x255x240	23.5	25
50B21.5S	50	150	215	360	140	500	85	90	85	175	130	253	520x255x240	26	27.5
65B21.5	65	150	220	345	140	485	85	90	85	175	130	253	510x255x240	23.5	25
65B21.5S	65	150	220	360	140	500	85	90	85	175	130	253	520x255x240	26	27.5

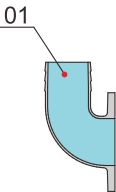
2P (2850rpm) | 0.75 - 1.5kW | 50Hz | Flange Type

Specification

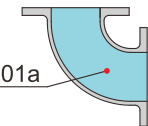
- Insulation: B
- Protection Class: IP68
- Liquid Temperature: up to 40°C
- Liquid pH: 6-10
- Density of Liquid: 1.3g/cm³
- Power Supply: Three Phase - 415V ±10%, 50Hz
Single Phase - 240V ±10%, 50Hz
- Motor Protection: Built-in
- Capacity: up to 37m³/hr
- Head: up to 21m
- Maximum Immersion Depth: 10m
- Cable Length: 8m



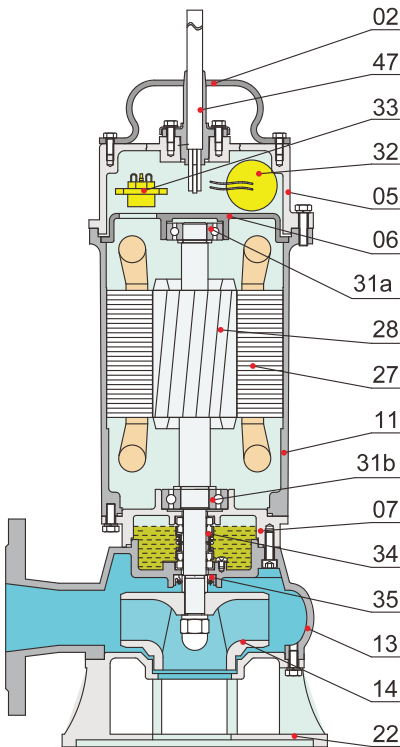
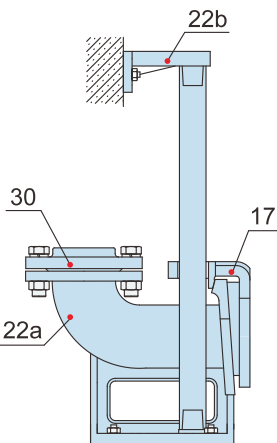
Movable Soft Pipe Installation (R)



Movable Hard Pipe Installation (Y)

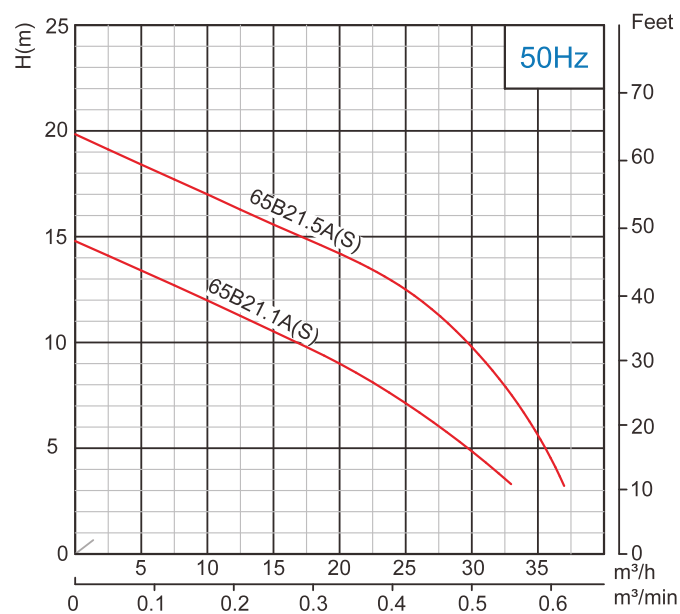
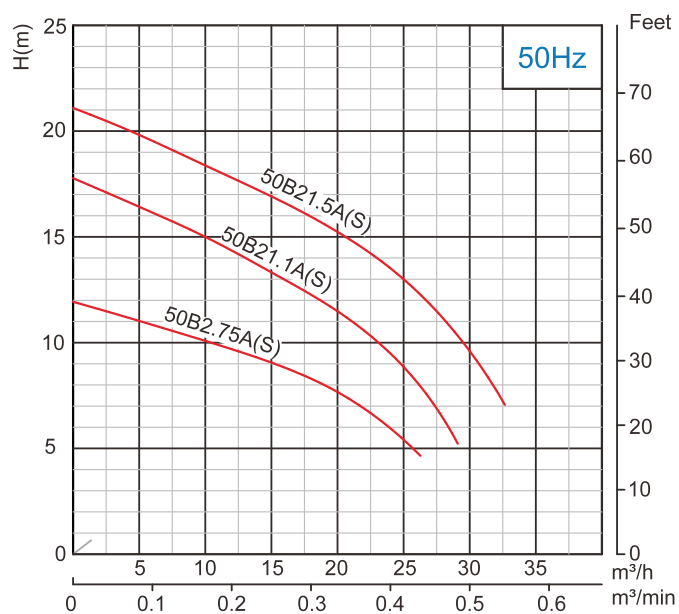


Auto-Coupled Installation (Z)



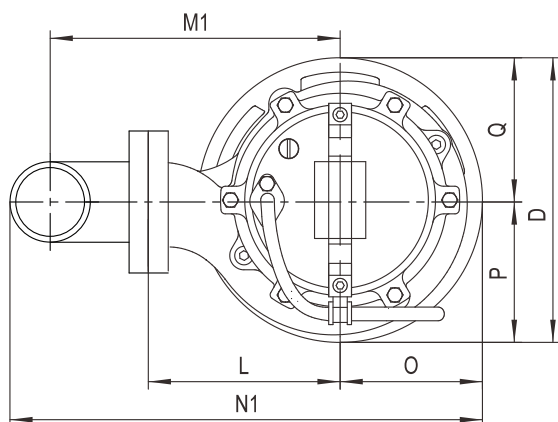
Material of Construction

No.	Part Name	Material
01	Hose Coupling	Cast Iron
01a	Hose Coupling	Cast Iron
02	Handle	Steel
05	Upper Cover	Cast Iron
06	Up-Bearing House	Cast Iron
07	Bearing House	Cast Iron
11	Motor Body	Cast Iron
13	Pump Body	Cast Iron
14	Impeller	Cast Iron
17	Coupling Adapter	Cast Iron
22	Seat Assembly	Cast Iron
22a	Coupling Seat	Cast Iron
22b	Upper Guide Support	Cast Iron
27	Stator	
28	Rotor	Shaft: AISI304SS
30	Flange	Cast Iron
31a	Bearing (Ball Type)	
31b	Bearing (Ball Type)	
32	Capacitor (Single Phase Only)	
33	Motor Protector	
34	Mechanical Seal	SiC-Cer/Carbon-Cer
35	Oil Seal	
47	Cable	

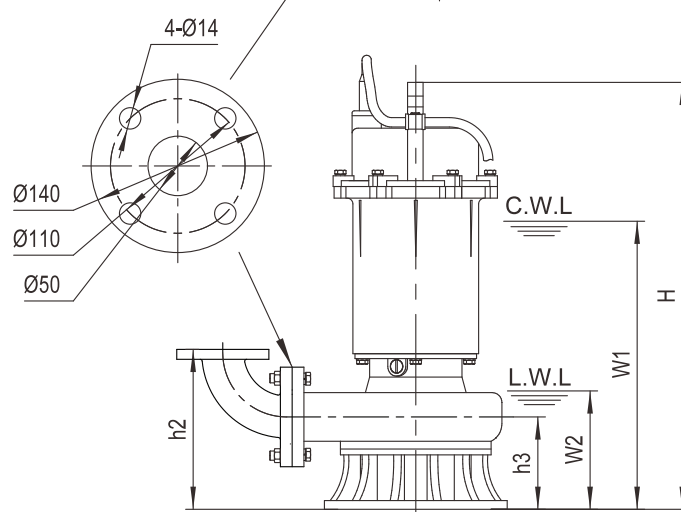
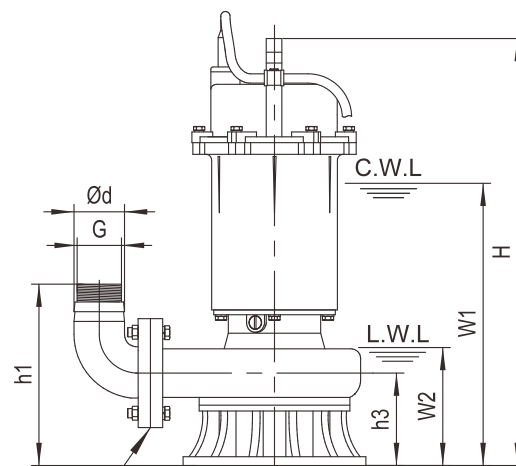
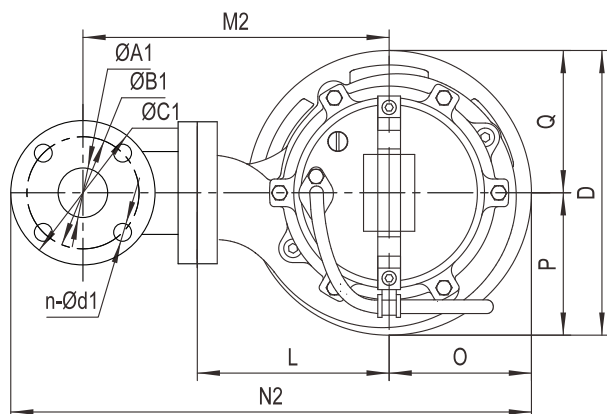


Model	Voltage	Current	Motor Power	Outlet		Rated Capacity	Rated Head	Max. Capacity	Max. Head	Impeller Passage	Cable
	V	A	kW	in	mm	m³/hr	m	m³/hr	m	mm	mm²
50B2.75A	415	2	0.75	2	50	10	10	26	12	25	4G1.0
50B2.75SA	240	5.2	0.75	2	50	10	10	26	12	25	3G1.0
50B2.1A	415	2.8	1.1	2	50	8	15	29	18	20	4G1.0
50B2.1SA	240	7.2	1.1	2	50	8	15	29	18	20	3G1.0
65B2.1A	415	2.8	1.1	2½	65	15	10	33	15	25	4G1.0
65B2.1SA	240	7.2	1.1	2½	65	15	10	33	15	25	3G1.0
50B2.15A	415	3.2	1.5	2	50	8	19	33	21	20	4G1.0
50B2.15SA	240	10	1.5	2	50	8	19	33	21	20	3G1.0
65B2.15A	415	3.2	1.5	2½	65	15	15	37	20	25	4G1.0
65B2.15SA	240	10	1.5	2½	65	15	15	37	20	25	3G1.0

Movable Soft Pipe Installation (R)



Movable Hard Pipe Installation (Y)

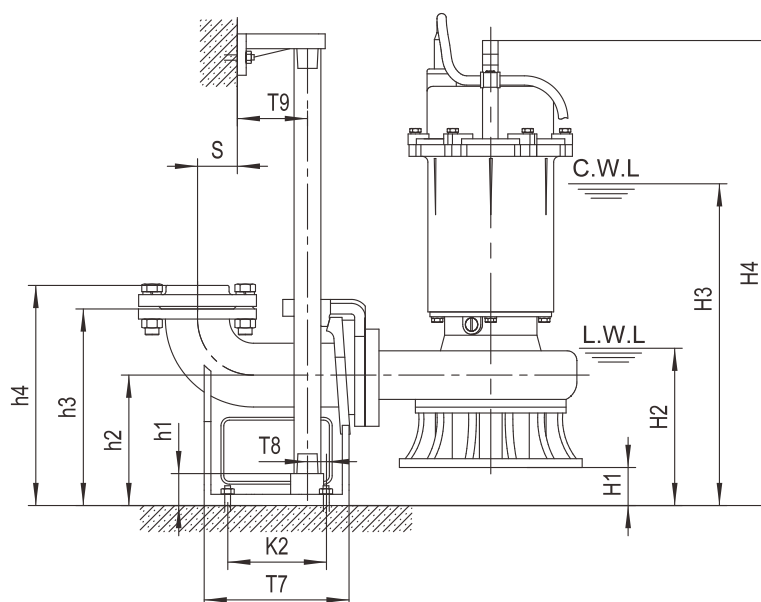
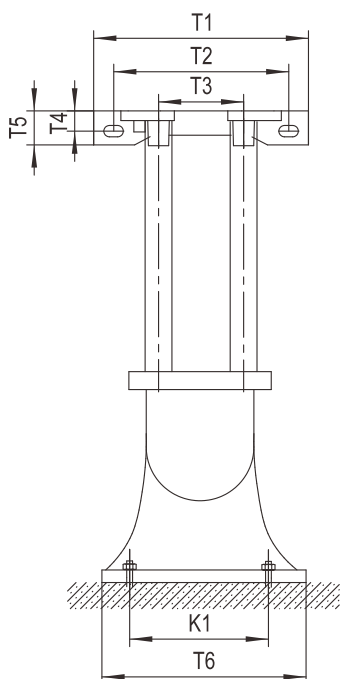


C.W.L : Continuous running water level
L.W.L : Lowest running water level

Model	Ød	G	ØA1	ØB1	ØC1	n-Ød1	h1	h2	h3	W1	W2	H	O	P	Q	L	D	M1	M2	N1	N2
	mm																				
50B2.75A	50	1½"	50	110	140	4-Ø14	200	195	95	300	120	450	94	96	94	130	190	195	225	315	388
50B2.75SA	50	1½"	50	110	140	4-Ø14	200	195	95	315	120	450	94	96	94	130	190	195	225	315	388
50B21.1A	50	1½"	50	110	140	4-Ø14	195	190	90	325	120	460	94	98	94	135	192	200	230	320	395
50B21.1SA	50	1½"	50	110	140	4-Ø14	195	190	90	345	120	480	94	98	94	135	192	200	230	320	395
65B21.1A	65	2"	65	130	160	4-Ø14	210	215	90	325	120	460	94	98	94	135	192	200	245	327	420
65B21.1SA	65	2"	65	130	160	4-Ø14	210	215	90	345	120	480	94	98	94	135	192	200	245	327	420
50B21.5A	50	1½"	50	110	140	4-Ø14	195	190	90	345	120	480	94	98	94	135	192	200	230	320	395
50B21.5SA	50	1½"	50	110	140	4-Ø14	195	190	90	360	120	495	94	98	94	135	192	200	230	320	395
65B21.5A	65	2"	65	130	160	4-Ø14	210	215	90	345	120	480	94	98	94	135	192	200	245	327	420
65B21.5SA	65	2"	65	130	160	4-Ø14	210	215	90	360	120	495	94	98	94	135	192	200	245	327	420

Model	R			Y		
	N.W.	G.W.	Packing Dimension	N.W.	G.W.	Packing Dimension
	kg	kg	mm	kg	kg	mm
50B2.75A	22	23.5	490x225x240	24	25.5	490x225x240
50B2.75SA	23	24.5	490x225x240	25	26.5	490x225x240
50B21.1A	24	25.5	490x225x240	26	27.5	490x225x240
50B21.1SA	25.5	27	515x225x240	26.5	29	515x225x240
65B21.1A	24	25.5	490x225x240	28	29.5	490x225x240
65B21.1SA	25.5	27	515x225x240	29.5	31	515x225x240
50B21.5A	26.5	28	510x225x240	28.5	30	510x225x240
50B21.5SA	29	30.5	520x225x240	31	32.5	520x225x240
65B21.5A	25.5	27	510x225x240	27.5	29	510x225x240
65B21.5SA	28.5	30	520x225x240	32.5	34	520x225x240

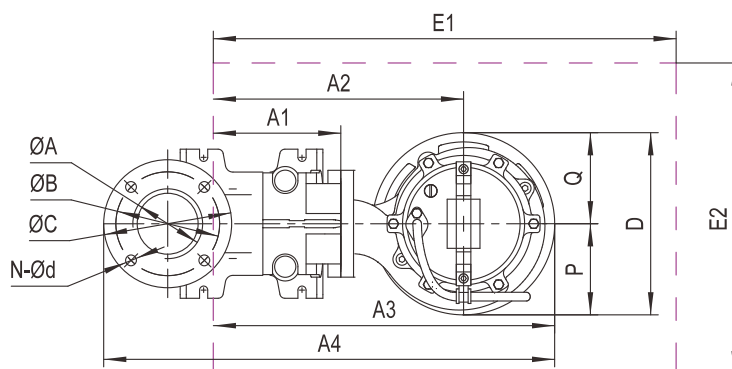
Auto-Coupled Installation (Z)



C.W.L : Continuous running water level

L.W.L : Lowest running water level

The coupling and pump will be packed individually, packing dimension and weight in table only refer to the pump, please refer to P48 to check coupling's packing dimension and weight.



Auto Coupling	ØA	ØB	ØC	N-Ød	T1	T2	T3	T4	T5	T6	T7	T8	T9	K1	K2	S	h1	h2	h3	h4
mm																				
50-50(PN6)	Ø50(G2")	110	140	4-Ø14	265	215	105	25	42	200	215	15	67	165	135	63	25	160	250	280

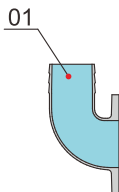
Model	Auto Coupling	H1	H2	H3	H4	A1	A2	A3	A4	P	Q	D	E1x2	Packing Dimension	N.W.	G.W.
mm														mm	kg	kg
50B2.75A	50-50(PN6)	65	185	365	515	155	285	378	510	96	94	190	650x550	490x225x240	20	21.5
50B2.75SA	50-50(PN6)	65	185	380	515	155	285	378	510	96	94	190	650x550	490x225x240	21	22.5
50B21.1A	50-50(PN6)	70	190	395	530	155	290	383	515	98	94	192	650x550	490x225x240	22	23.5
50B21.1SA	50-50(PN6)	70	190	415	550	155	290	383	515	98	94	192	650x550	515x225x240	23.5	25
65B21.1A	50-50(PN6)	70	190	395	530	155	290	383	515	98	94	192	650x550	490x225x240	21	22.5
65B21.1SA	50-50(PN6)	70	190	415	550	155	290	383	515	98	94	192	650x550	515x225x240	22.5	24
50B21.5A	50-50(PN6)	70	190	415	550	155	290	383	515	98	94	192	650x550	510x225x240	24.5	26
50B21.5SA	50-50(PN6)	70	190	430	565	155	290	383	515	98	94	192	650x550	520x225x240	27	28.5
65B21.5A	50-50(PN6)	70	190	415	550	155	290	383	515	98	94	192	650x550	510x225x240	22.5	24
65B21.5SA	50-50(PN6)	70	190	430	565	155	290	383	515	98	94	192	650x550	520x225x240	25.5	27

2P (2850rpm) | 2.2 - 5.5kW | 50Hz

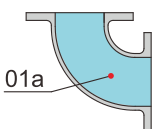
Specification

- Insulation: B
- Protection Class: IP68
- Liquid Temperature: up to 40°C
- Liquid pH: 6-10
- Density of Liquid: 1.3g/cm³
- Power Supply: Three Phase - 415V ±10%, 50Hz
- Motor Protection: Built-in
- Capacity: up to 110m³/hr
- Head: up to 42m
- Maximum Immersion Depth: 10m
- Cable Length: 8m

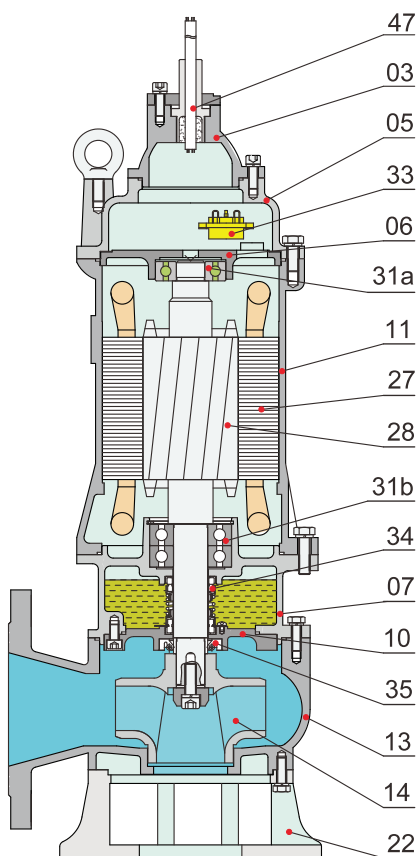
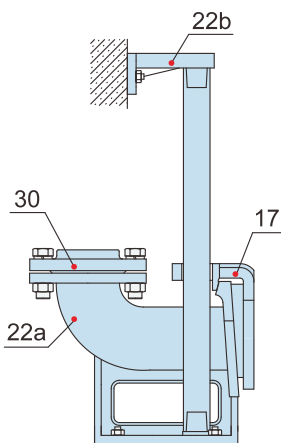
Movable Soft Pipe Installation (R)



Movable Hard Pipe Installation (Y)

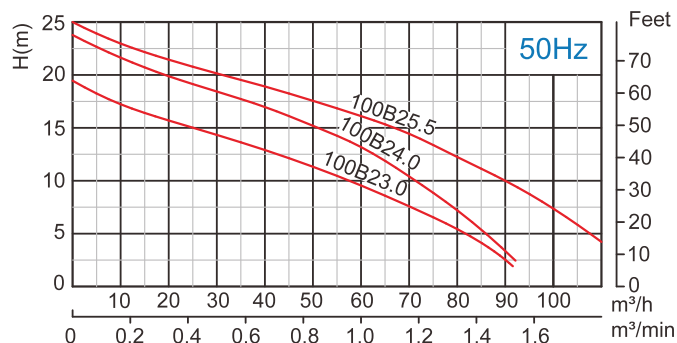
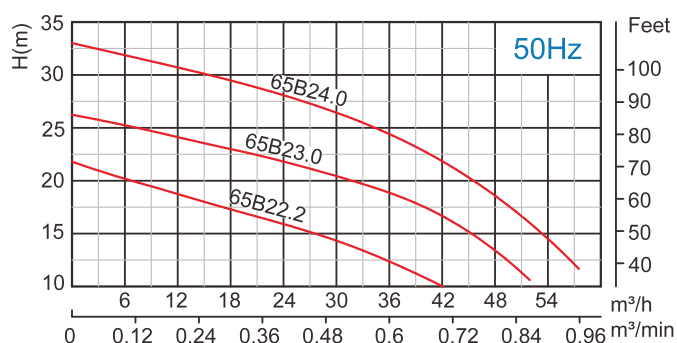
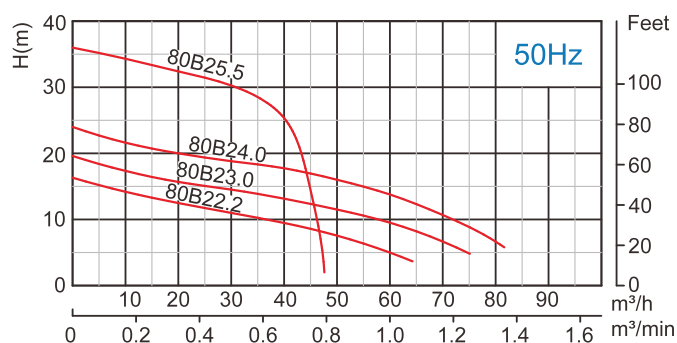
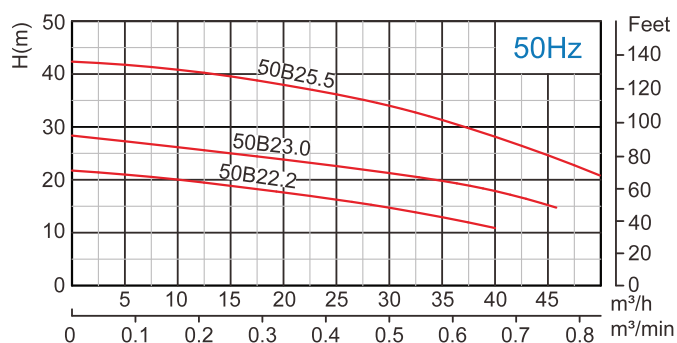


Auto-Coupled Installation (Z)



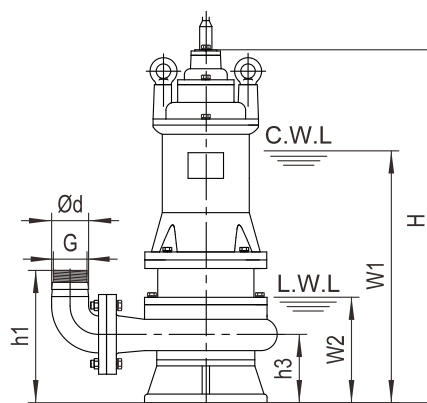
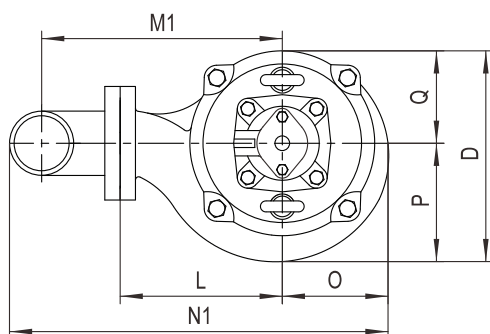
Material of Construction

No.	Part Name	Material
01	Hose Coupling	Cast Iron
01a	Hose Coupling	Cast Iron
03	Terminal Box	Cast Iron
05	Upper Cover	Cast Iron
06	Up-Bearing House	Cast Iron
07	Bearing House	Cast Iron
10	Seal Bracket	Cast Iron
11	Motor Body	Cast Iron
13	Pump Body	Cast Iron
14	Impeller	Cast Iron
17	Coupling Adapter	Cast Iron
22	Seat Assembly	Cast Iron
22a	Coupling Seat	Cast Iron
22b	Upper Guide Support	Cast Iron
27	Stator	Cast Iron
28	Rotor	Shaft: AISI304SS
30	Flange	Cast Iron
31a	Bearing (Ball Type)	
31b	Bearing (Ball Type)	
33	Motor Protector	
34	Mechanical Seal	SiC-SiC/Carbon-Cer
35	Oil Seal	
47	Cable	

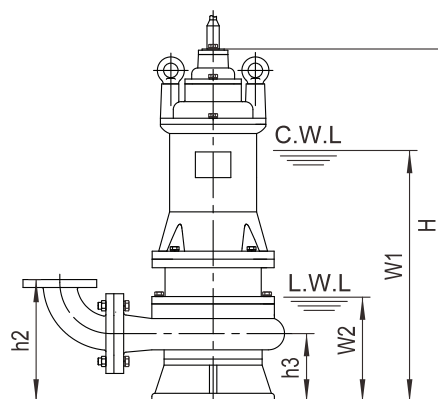
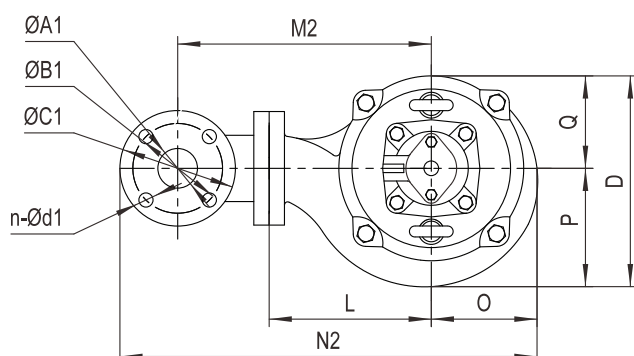


Model	Voltage	Current	Motor Power	Outlet		Rated Capacity	Rated Head	Max. Capacity	Max. Head	Impeller Passage	Cable
	V	A	kW	in	mm	m³/hr	m	m³/hr	m	mm	mm²
50B22.2	415	5	2.2	2	50	15	19	40	22	20	4G1.0
65B22.2	415	5	2.2	2½	65	25	16	42	22	20	4G1.0
80B22.2	415	5	2.2	3	80	40	9	64	16	30	4G1.0
50B23.0	415	6.5	3	2	50	15	25	46	28	20	4G1.5
65B23.0	415	6.5	3	2½	65	25	22	52	26/29	20	4G1.5
80B23.0	415	6.5	3	3	80	40	13	75	20	30	4G1.5
100B23.0	415	6.5	4	4	100	60	9	92	19	30	4G1.5
65B24.0	415	8.9	4	2½	65	25	28/27	58	33	20	4G1.5
80B24.0	415	8.9	4	3	80	40	18	81	24	30	4G1.5
100B24.0	415	8.9	4	4	100	60	13	93	24	30	4G1.5
50B25.5	415	11.7	5.5	2	50	15	40/38	52	42	20	4G2.5
80B25.5	415	11.7	5.5	3	80	30	30	47	36	25	4G2.5
100B25.5	415	11.7	5.5	4	100	65	15	110	25	30	4G2.5

Movable Soft Pipe Installation (R)



Movable Hard Pipe Installation (Y)

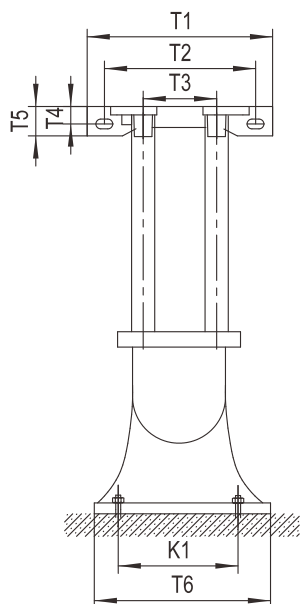


C.W.L. : Continuous running water level
L.W.L. : Lowest running water level

Model	Ød	G	ØA1	ØB1	ØC1	n-Ød1	h1	h2	h3	W1	W2	H	O	P	Q	L	D	M1	M2	N1	N2
	mm																				
50B22.2	50	1½"	50	110	140	4-Ø14	210	205	105	410	145	575	107	113	100	165	213	230	260	363	438
65B22.2	65	2"	65	130	160	4-Ø14	225	225	105	410	145	575	107	113	100	165	213	235	275	375	463
80B22.2	80	2½"	80	150	190	4-Ø18	255	250	110	415	150	580	105	111	100	160	211	252	302	395	502
50B23.0	50	1½"	50	110	140	4-Ø14	210	205	105	425	145	510	107	113	100	165	213	230	260	363	438
65B23.0	65	2"	65	130	160	4-Ø14	225	225	105	425	145	610	107	113	100	165	213	235	275	375	463
80B23.0	80	2½"	80	150	190	4-Ø18	270	265	125	450	170	630	107	115	100	153	215	245	295	390	497
100B23.0	100	—	100	170	210	4-Ø18	295	275	125	450	170	630	107	115	100	165	215	267	315	425	528
65B24.0	65	2"	65	130	160	4-Ø14	240	240	120	455	160	650	115	115	115	180	230	250	290	397	486
80B24.0	80	2½"	80	150	190	4-Ø18	280	275	135	480	185	675	115	115	115	165	230	257	307	410	517
100B24.0	100	—	100	170	210	4-Ø18	305	285	135	480	185	675	115	115	115	175	230	278	327	443	547
50B25.5	50	1½"	50	110	140	4-Ø14	235	230	130	475	160	675	125	130	125	175	255	240	272	390	467
80B25.5	80	2½"	80	150	190	4-Ø18	275	270	130	495	175	690	125	125	125	175	250	267	317	430	537
100B25.5	100	—	100	170	210	4-Ø18	305	285	135	505	190	705	131	140	125	180	265	285	334	465	570

Model	R			Y		
	N.W.	G.W.	Packing Dimension	N.W.	G.W.	Packing Dimension
	kg	kg	mm	kg	kg	mm
50B22.2	42	48	690x260x315	44	50	690x260x325
65B22.2	44	50	690x260x315	48	54	690x260x325
80B22.2	47	52	710x260x315	51	56	710x260x335
50B23.0	50	55	710x260x315	52	57	710x260x325
65B23.0	51	57	710x260x315	55	61	710x260x325
80B23.0	55	60	750x240x325	59	64	750x240x345
100B23.0	57	63	750x260x345	63	69	750x260x375
65B24.0	61	69	780x260x335	65	73	780x260x345
80B24.0	65	71	800x260x325	69	75	800x260x345
100B24.0	67	73	800x260x355	73	79	800x260x385
50B25.5	74	81	790x290x355	76	83	790x290x365
80B25.5	77	83	800x290x335	81	87	800x290x355
100B25.5	81	89	810x300x375	87	95	810x300x405

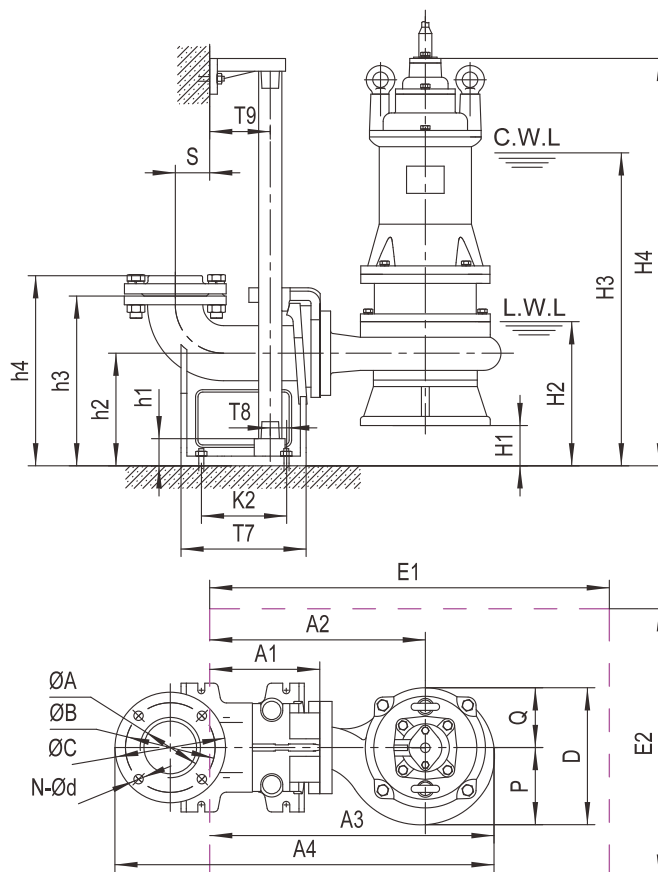
Auto-Coupled Installation (Z)



C.W.L : Continuous running water level

L.W.L : Lowest running water level

The coupling and pump will be packed individually, packing dimension and weight in table only refer to the pump, please refer to P48 to check coupling's packing dimension and weight.



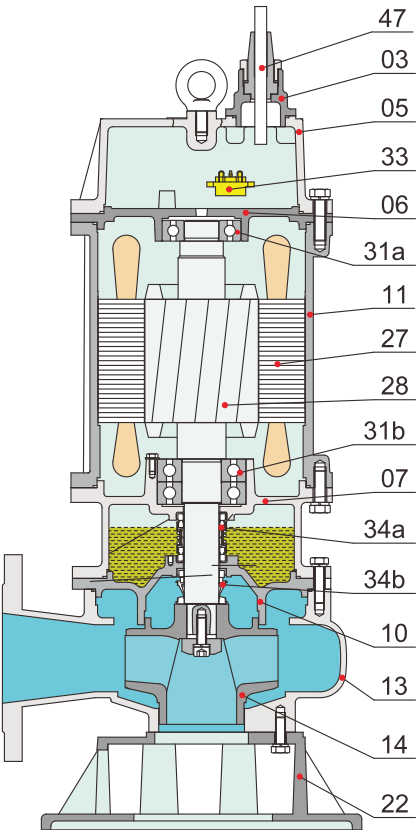
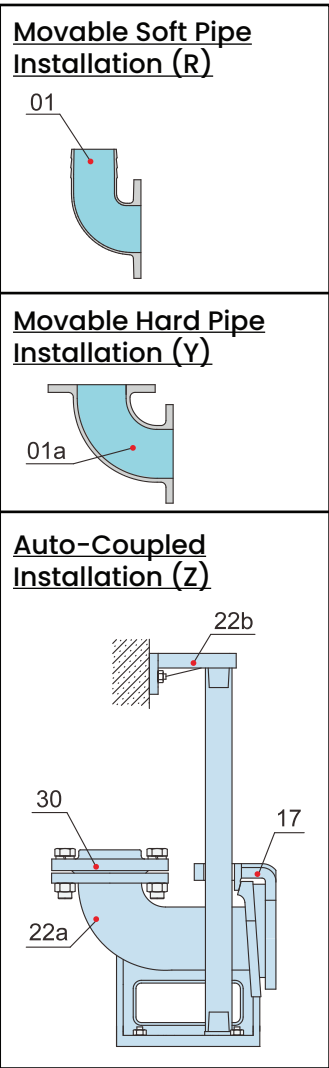
Auto Coupling	ØA	ØB	ØC	N-Ød	T1	T2	T3	T4	T5	T6	T7	T8	T9	K1	K2	S	h1	h2	h3	h4
mm																				
50-50(PN6)	Ø50(G2")	110	140	4-Ø14	265	215	105	25	42	200	215	15	67	165	135	63	25	160	250	280
65-65(PN6)	Ø65(G2½")	130	160	4-Ø14	280	230	125	30	50	230	235	20	70	190	155	90	25	165	265	295
80-80(PN6)	Ø80(G3")	150	190	4-Ø18	315	265	145	27	50	255	225	30	78	215	155	77	25	190	305	335
100-100(PN6)	Ø100(G4")	170	210	4-Ø18	365	305	170	32	55	295	260	35	95	265	175	100	25	230	350	380

Model	Auto Coupling	H1	H2	H3	H4	A1	A2	A3	A4	P	Q	D	E1xE2	Packing Dimension	N.W.	G.W.
mm																
50B22.2	50-50(PN6)	55	200	465	630	155	319	426	559	113	100	213	650x550	690x260x315	40	46
65B22.2	65-65(PN6)	60	205	470	635	155	318	425	596	113	100	213	650x550	690x260x315	42	48
80B22.2	80-80(PN6)	78	230	495	660	176	336	441	613	111	100	211	650x550	710x260x315	42	47
50B23.0	50-50(PN6)	55	200	480	665	155	319	426	559	113	100	213	650x550	710x260x315	48	53
65B23.0	65-65(PN6)	60	205	485	670	155	318	425	596	113	100	213	650x550	710x260x315	48	54
80B23.0	80-80(PN6)	68	235	515	695	176	329	436	608	115	100	215	650x550	750x240x325	50	55
100B23.0	100-100(PN6)	108	275	555	735	200	364	471	677	115	100	215	700x550	750x260x345	51	57
65B24.0	65-65(PN6)	45	205	500	695	155	333	448	619	115	115	230	650x550	780x260x335	58	66
80B24.0	80-80(PN6)	57	240	535	730	176	341	456	628	115	115	230	650x550	800x260x325	60	66
100B24.0	100-100(PN6)	97	280	575	770	200	375	490	696	115	115	230	700x550	800x260x355	61	67
50B25.5	50-50(PN6)	32	190	505	705	155	330	455	588	130	125	255	650x550	790x290x355	72	79
80B25.5	80-80(PN6)	61	235	555	750	176	351	476	648	125	125	250	700x550	800x290x335	72	78
100B25.5	100-100(PN6)	95	285	600	800	200	381	512	718	140	125	265	700x550	810x300x375	75	83

2P (2850rpm) | 7.5 - 11kW | 50Hz

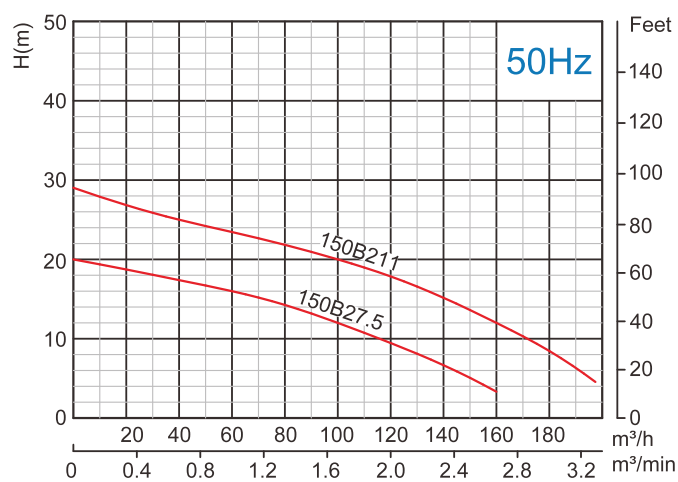
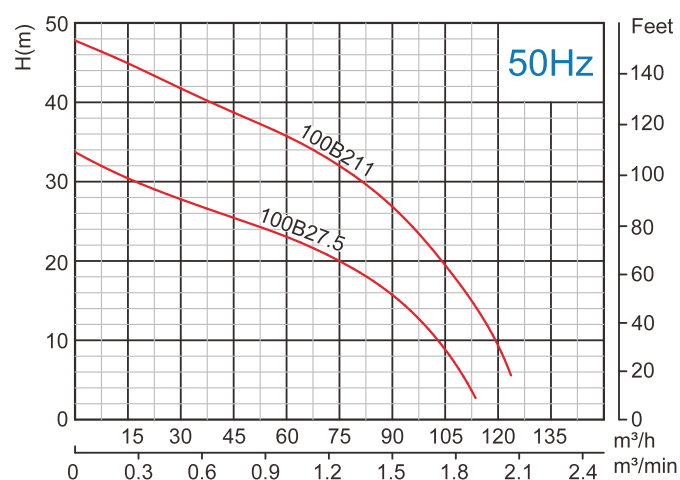
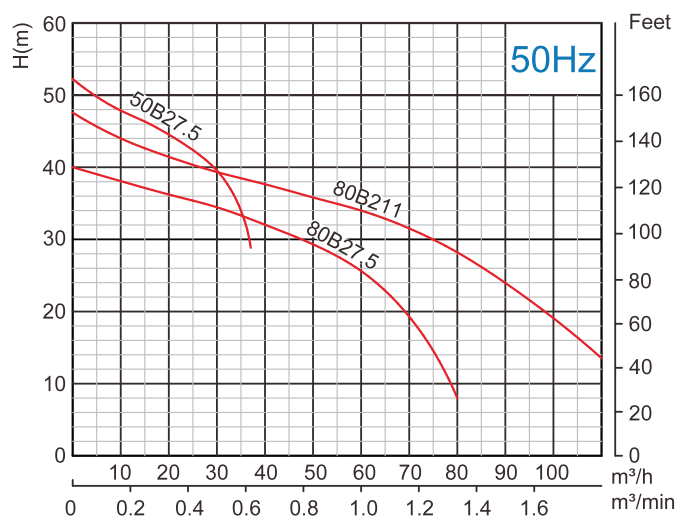
Specification

- Insulation: F
- Protection Class: IP68
- Liquid Temperature: up to 40°C
- Liquid pH: 6-10
- Density of Liquid: 1.3g/cm³
- Power Supply: Three Phase - 415V ±10%, 50Hz
- Motor Protection: Built-in
- Capacity: up to 200m³/hr
- Head: up to 52m
- Maximum Immersion Depth: 20m
- Cable Length: 8m



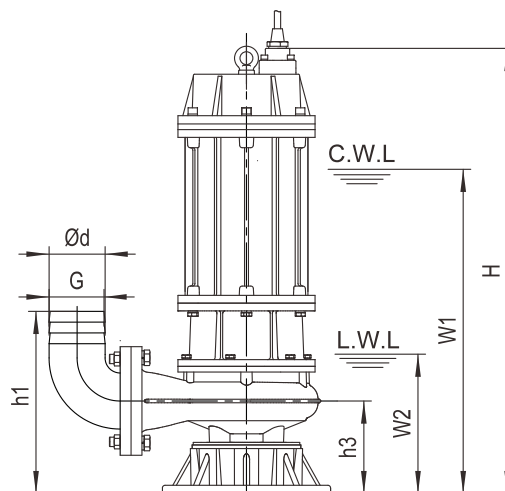
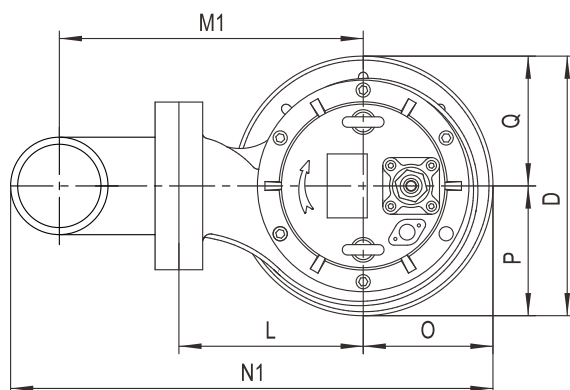
Material of Construction

No.	Part Name	Material
01	Hose Coupling	Cast Iron
01a	Hose Coupling	Cast Iron
03	Terminal Box	Cast Iron
05	Upper Cover	Cast Iron
06	Up-Bearing House	Cast Iron
07	Bearing House	Cast Iron
10	Seal Bracket	Cast Iron
11	Motor Body	Cast Iron
13	Pump Body	Cast Iron
14	Impeller	Cast Iron
17	Coupling Adapter	Cast Iron
22	Seat Assembly	Cast Iron
22a	Coupling Seat	Cast Iron
22b	Upper Guide Support	Cast Iron
27	Stator	
28	Rotor	Shaft: AISI304SS
30	Flange	Cast Iron
31a	Bearing (Ball Type)	
31b	Bearing (Ball Type)	
33	Motor Protector	
34a	Mechanical Seal	SiC-SiC/Carbon-Cer
34b	Mechanical Seal	SiC-SiC
47	Cable	

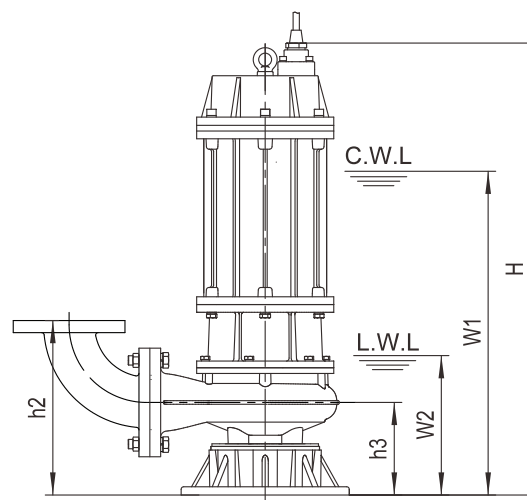
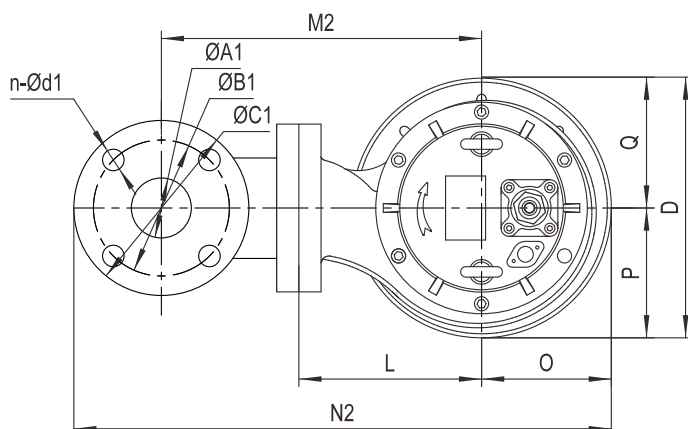


Model	Voltage	Current	Motor Power	Outlet		Rated Capacity	Rated Head	Max. Capacity	Max. Head	Impeller Passage	Cable
	V	A	kW	in	mm	m³/hr	m	m³/hr	m	mm	mm²
50B27.5	415	15.7	7.5	2	50	20	45	37	52	25	4G4.0
80B27.5	415	15.7	7.5	3	80	30	35	80	40	30	4G4.0
100B27.5	415	15.7	7.5	4	100	65	22/19	110	34/30	35	4G4.0
150B27.5	415	15.7	7.5	6	150	100	12/10	160/135	20/18	35	4G4.0
80B211	415	22	11	3	80	45	37	110	48	35	4G4.0
100B211	415	22	11	4	100	65	35/33	125	48/46	35	4G4.0
150B211	415	22	11	6	150	100	20/19	200/185	29/27	50	4G4.0

Movable Soft Pipe Installation (R)



Movable Hard Pipe Installation (Y)

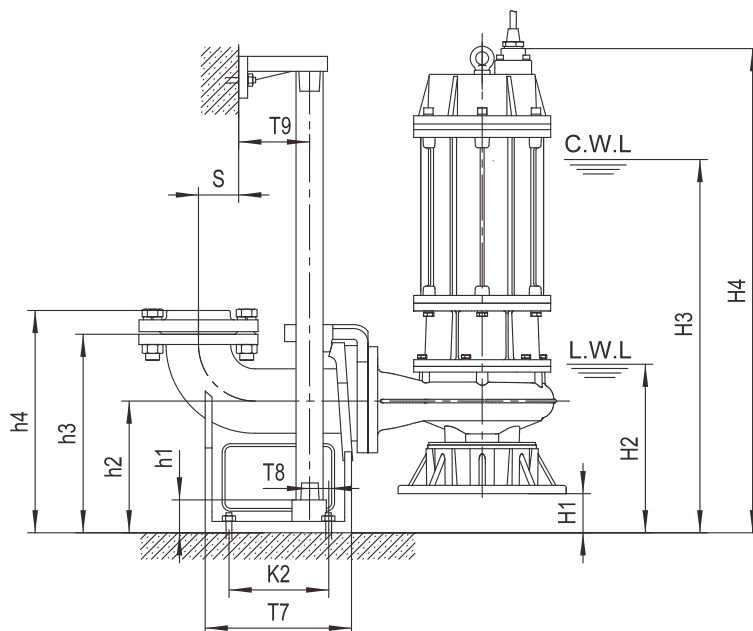
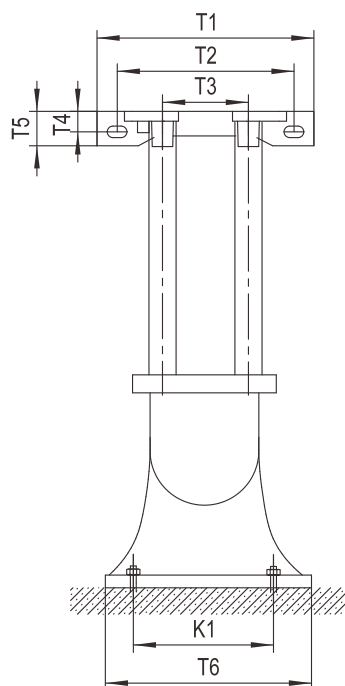


C.W.L : Continuous running water level
L.W.L : Lowest running water level

Model	Ød	G	ØA1	ØB1	ØC1	n-Ød1	h1	h2	h3	W1	W2	H	O	P	Q	L	D	M1	M2	N1	N2
	mm																				
50B27.5	50	1½"	50	110	140	4-Ø14	265	260	160	540	210	760	162	162	162	200	324	267	298	454	530
80B27.5	80	—	80	150	190	4-Ø18	305	300	160	540	210	760	162	162	162	200	324	292	342	491	599
100B27.5	100	—	100	170	210	4-Ø18	345	325	175	560	230	780	162	162	162	200	324	302	352	514	619
150B27.5	150	—	150	225	265	8-Ø18	405	380	180	575	245	795	162	162	162	210	324	362	412	598	706
80B211	80	—	80	150	190	4-Ø18	320	315	175	580	230	825	162	162	162	200	324	292	342	491	599
100B211	100	—	100	170	210	4-Ø18	345	325	175	580	230	825	162	162	162	200	324	302	352	514	619
150B211	150	—	150	225	265	8-Ø18	405	380	180	595	245	840	162	162	162	210	324	362	412	598	706

Model	R			Y		
	N.W. kg	G.W. kg	Packing Dimension mm	N.W. kg	G.W. kg	Packing Dimension mm
50B27.5	114	127	894x364x435	116	129	894x364x445
80B27.5	118	130	894x364x435	122	134	894x364x445
100B27.5	122	134	924x364x435	128	140	924x364x465
150B27.5	134	146	944x384x455	142	154	944x384x495
80B211	131	143	964x364x435	135	147	964x364x455
100B211	133	145	964x364x435	139	151	964x364x465
150B211	145	157	984x384x455	153	165	984x384x495

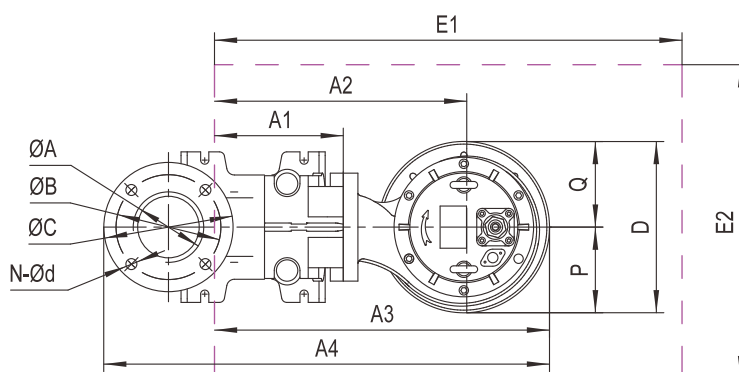
Auto-Coupled Installation (Z)



C.W.L : Continuous running water level

L.W.L : Lowest running water level

The coupling and pump will be packed individually, packing dimension and weight in table only refer to the pump, please refer to P48 to check coupling's packing dimension and weight.



Auto Coupling	ØA	ØB	ØC	N-Ød	T1	T2	T3	T4	T5	T6	T7	T8	T9	K1	K2	S	h1	h2	h3	h4
mm																				
80-80(PN6)	Ø80(G3")	150	190	4-Ø18	315	265	145	27	50	255	225	30	78	215	155	77	25	190	305	335
100-100(PN6)	Ø100(G4")	170	210	4-Ø18	365	305	170	32	55	295	260	35	95	265	175	100	25	230	350	380
150-150(PN6)	Ø150(G6")	225	265	8-Ø18	400	260	280	24	48	400	410	75	95	280	300	200	390	300	480	—

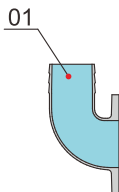
Model	Auto Coupling	H1	H2	H3	H4	A1	A2	A3	A4	P	Q	D	E1x2	Packing Dimension	N.W.	G.W.
		mm												mm	kg	kg
50B27.5	—	—	—	—	—	—	—	—	—	—	—	—	—	—	—	—
80B27.5	80-80(PN6)	30	240	570	790	175	375	538	710	162	162	324	750x550	894x364x435	113	125
100B27.5	100-100(PN6)	55	285	615	835	200	400	562	768	162	162	324	750x550	924x364x435	116	128
150B27.5	150-150(PN6)	120	265	695	915	285	495	655	996	162	162	324	850x550	944x384x455	122	134
80B211	80-80(PN6)	15	245	595	840	175	375	538	710	162	162	324	750x550	964x364x435	126	138
100B211	100-100(PN6)	55	285	635	880	200	400	562	768	162	162	324	750x550	964x364x435	127	139
150B211	150-150(PN6)	120	365	715	960	285	495	655	996	162	162	324	750x550	984x384x455	133	145

4P (1450rpm) | 2.2 - 3.7kW | 50Hz

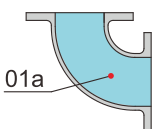
Specification

- Insulation: F
- Protection Class: IP68
- Liquid Temperature: up to 40°C
- Liquid pH: 6-10
- Density of Liquid: 1.3g/cm³
- Power Supply: Three Phase - 415V ±10%, 50Hz
- Motor Protection: Built-in
- Capacity: up to 130m³/hr
- Head: up to 17m
- Maximum Immersion Depth: 15m
- Cable Length: 8m

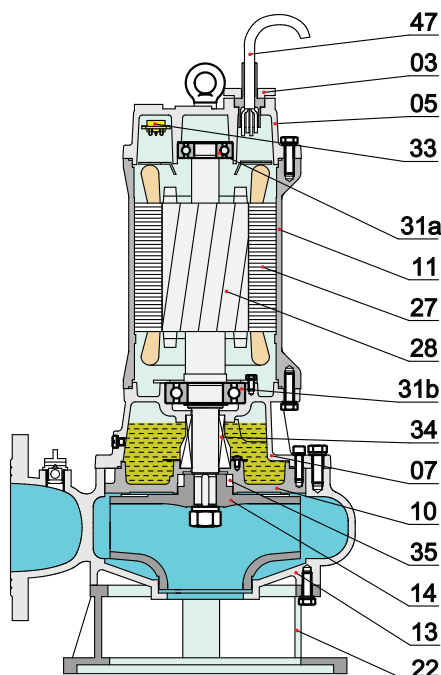
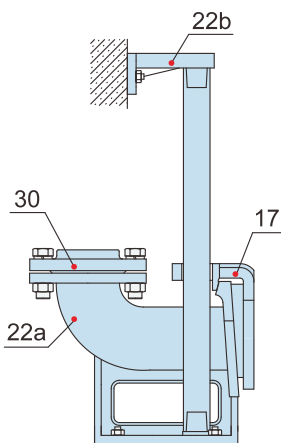
Movable Soft Pipe Installation (R)



Movable Hard Pipe Installation (Y)

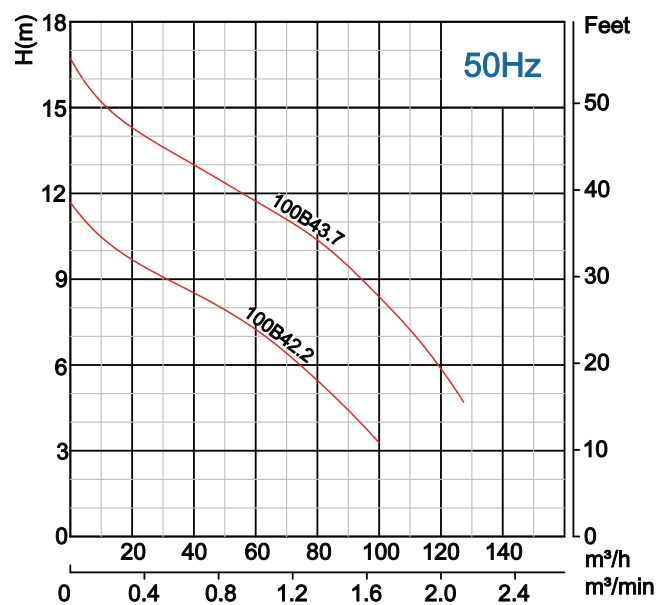
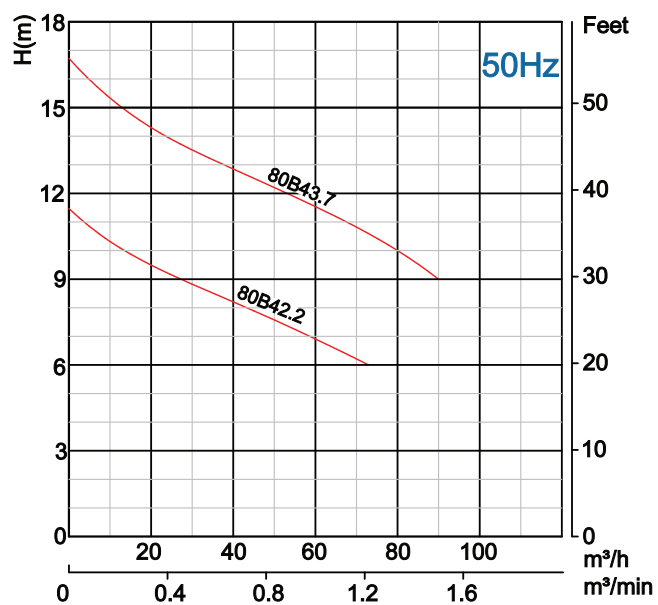


Auto-Coupled Installation (Z)



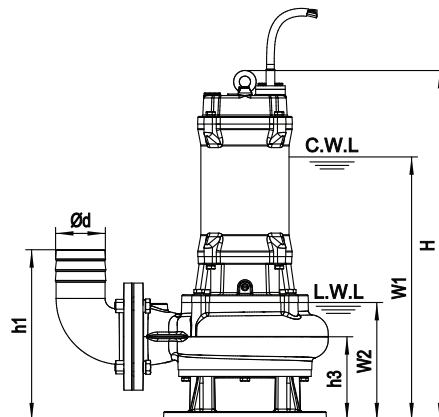
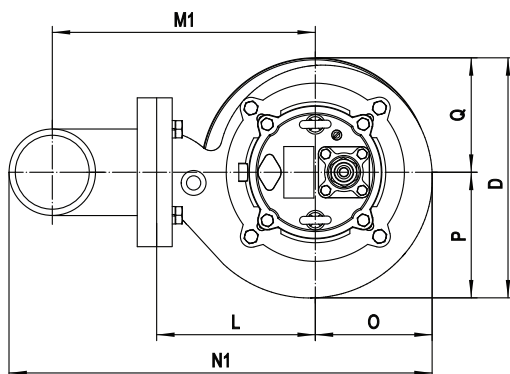
Material of Construction

No.	Part Name	Material
01	Hose Coupling	Cast Iron
01a	Hose Coupling	Cast Iron
03	Cable Fixing Plate	Cast Iron
05	Upper Cover	Cast Iron
07	Bearing House	Cast Iron
10	Seal Bracket	Cast Iron
11	Motor Body	Cast Iron
13	Pump Body	Cast Iron
14	Impeller	Cast Iron
17	Coupling Adapter	Cast Iron
22	Seat Assembly	Cast Iron
22a	Coupling Seat	Cast Iron
22b	Upper Guide Support	Cast Iron
27	Stator	
28	Rotor	Shaft: AISI304SS
30	Flange	Cast Iron
31a	Bearing (Ball Type)	
31b	Bearing (Ball Type)	
33	Motor Protector	
34	Mechanical Seal	SiC-SiC
35	Oil Seal	
47	Cable	

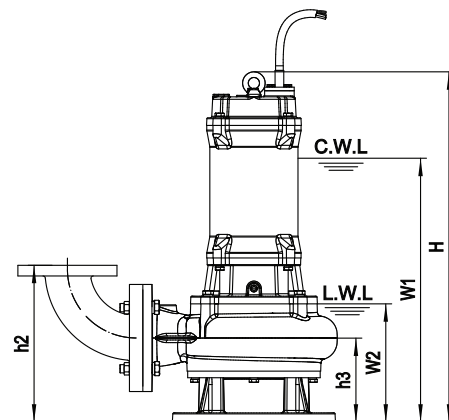
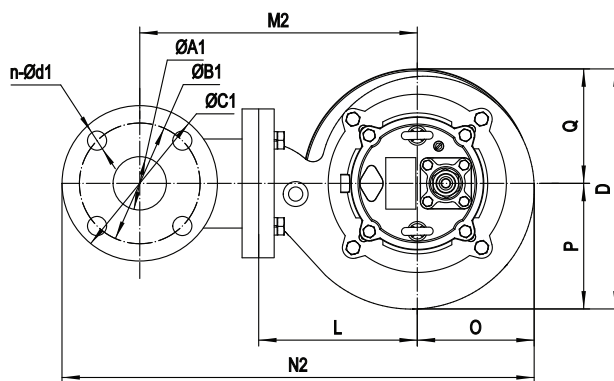


Model	Voltage	Current	Motor Power	Outlet		Rated Capacity	Rated Head	Max. Capacity	Max. Head	Impeller Passage	Cable
	V	A	kW	in	mm	m³/hr	m	m³/hr	m	mm	mm²
80B42.2	415	5.0	2.2	3	80	45	8	73	12	50	1.5
100B42.2	415	5.0	2.2	4	100	60	7	100	12	50	1.5
80B43.7	415	8.5	3.7	3	80	45	13	90	17	50	1.5
100B43.7	415	8.5	3.7	4	100	60	12	130	17	50	1.5

Movable Soft Pipe Installation (R)



Movable Hard Pipe Installation (Y)

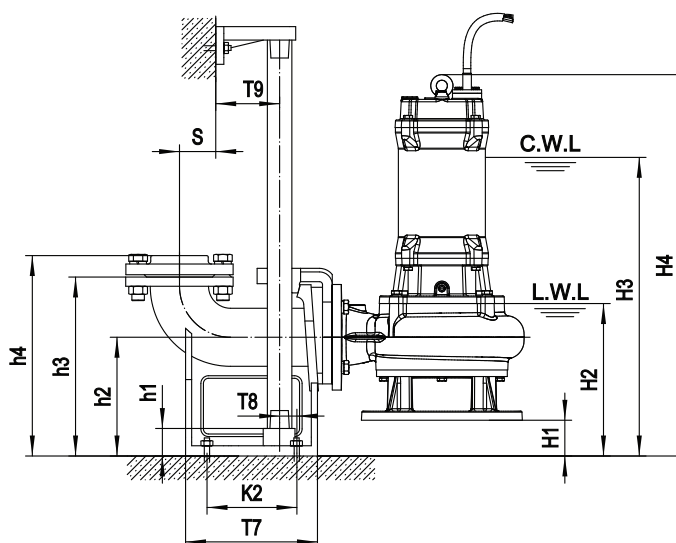
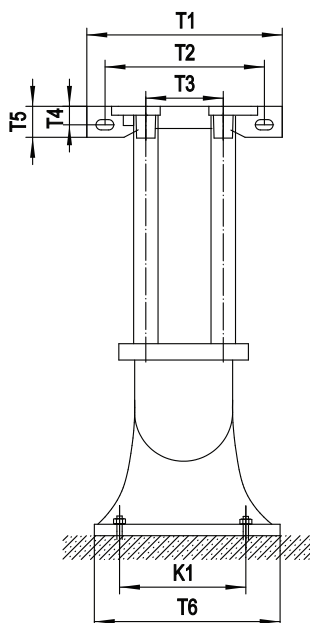


C.W.L. : Continuous running water level
L.W.L. : Lowest running water level

Model	Ød	G	ØA1	ØB1	ØC1	n-Ød1	h1	h2	h3	W1	W2	H	O	P	Q	L	D	M1	M2	N1	N2
mm																					
80B42.2	80	—	80	150	190	4-Ø18	310	305	165	475	232	622	163	176	160	220	336	312	362	513	620
100B42.2	100	—	100	170	210	4-Ø18	335	315	165	475	232	622	163	176	160	220	336	322	372	535	640
80B43.7	80	—	80	150	190	4-Ø18	310	305	165	540	232	687	163	176	160	220	336	312	362	513	620
100B43.7	100	—	100	170	210	4-Ø18	335	315	165	540	232	687	163	176	160	220	336	322	372	535	640

Model	R			Y		
	N.W.	G.W.	Packing Dimension	N.W.	G.W.	Packing Dimension
	kg	kg	mm	kg	kg	mm
80B42.2	78	87	735x375x465	82	91	700x470x1100
100B42.2	80	89	735x375x465	84	93	700x470x1130
80B43.7	88	97	795x375x465	92	101	700x500x1170
100B43.7	90	99	795x375x465	94	103	700x470x1150

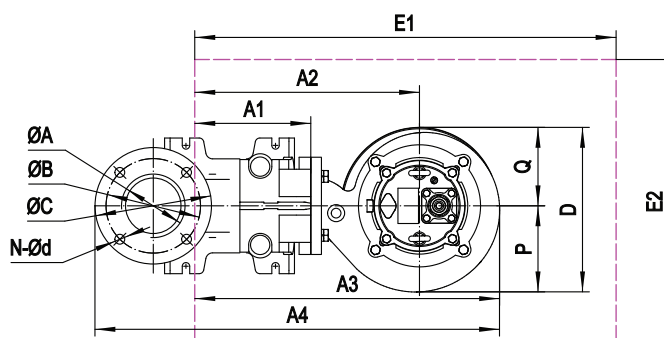
Auto-Coupled Installation (Z)



C.W.L : Continuous running water level

L.W.L : Lowest running water level

The coupling and pump will be packed individually, packing dimension and weight in table only refer to the pump, please refer to P48 to check coupling's packing dimension and weight.



Auto Coupling	ØA	ØB	ØC	N-Ød	T1	T2	T3	T4	T5	T6	T7	T8	T9	K1	K2	S	h1	h2	h3	h4
mm																				
80-80(PN6)	Ø80/G3"	150	190	4-Ø18	315	265	145	27	50	255	225	30	78	215	155	77	25	190	305	335
100-100(PN6)	Ø100/G4"	170	210	4-Ø18	365	305	170	32	55	295	260	35	95	265	175	100	25	230	350	380

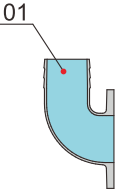
Model	Auto Coupling	H1	H2	H3	H4	A1	A2	A3	A4	P	Q	D	E1x E2	Packing Dimension	N.W.	G.W.
mm																
80B42.2	80-80(PN6)	25	260	500	650	175	395	560	730	176	160	336	800x600	735x375x465	73	82
100B42.2	100-100(PN6)	65	300	540	690	200	420	582	790	176	160	336	800x600	735x375x465	74	83
80B43.7	80-80(PN6)	25	260	560	710	175	395	560	730	176	160	336	800x600	795x375x465	83	92
100B43.7	100-100(PN6)	65	300	600	750	200	420	582	790	176	160	336	800x600	795x375x465	84	93

4P (1450rpm) | 5.5 - 7.5kW | 50Hz

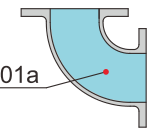
Specification

- Insulation: F
- Protection Class: IP68
- Liquid Temperature: up to 40°C
- Liquid pH: 6-10
- Density of Liquid: 1.3g/cm³
- Power Supply: Three Phase - 415V ±10%, 50Hz
- Motor Protection: Built-in
- Capacity: up to 400m³/hr
- Head: up to 24m
- Maximum Immersion Depth: 20m
- Cable Length: 8m

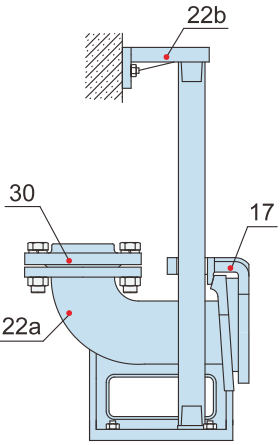
Movable Soft Pipe Installation (R)



Movable Hard Pipe Installation (Y)



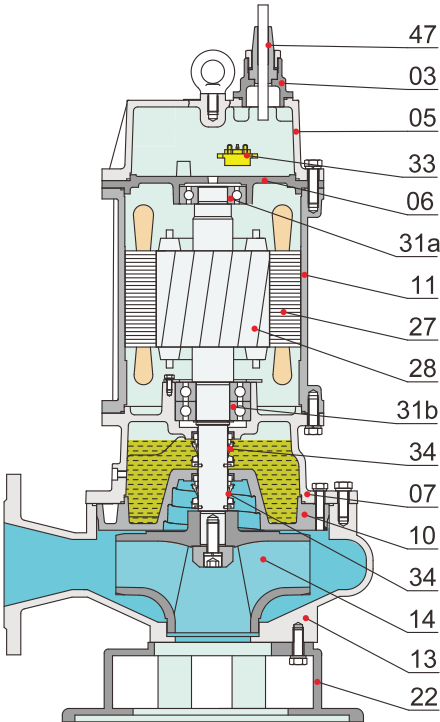
Auto-Coupled Installation (Z)

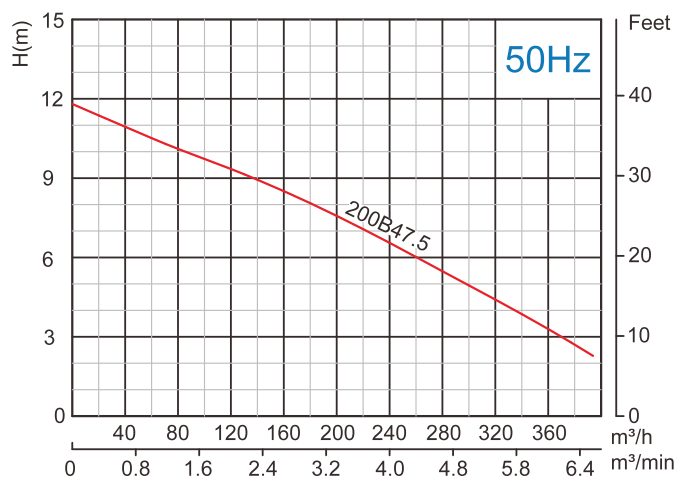
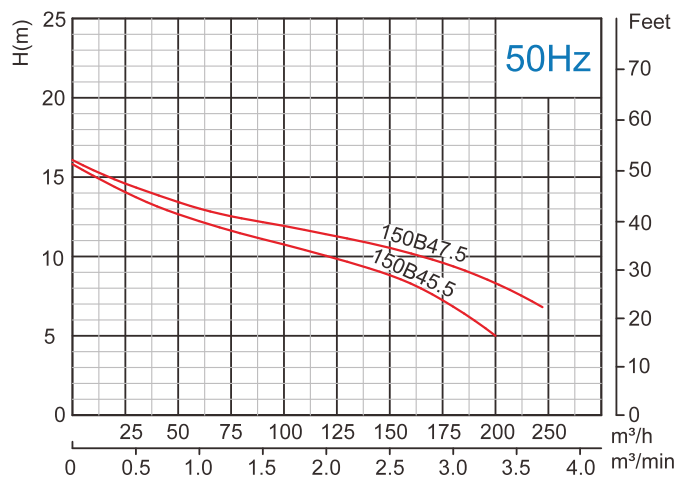
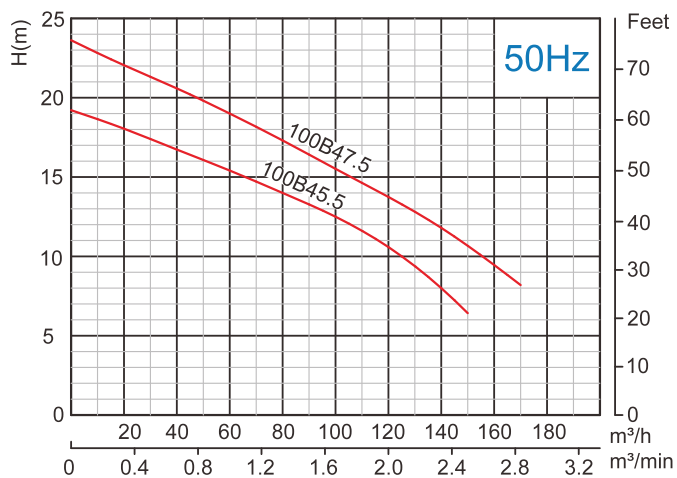




Material of Construction

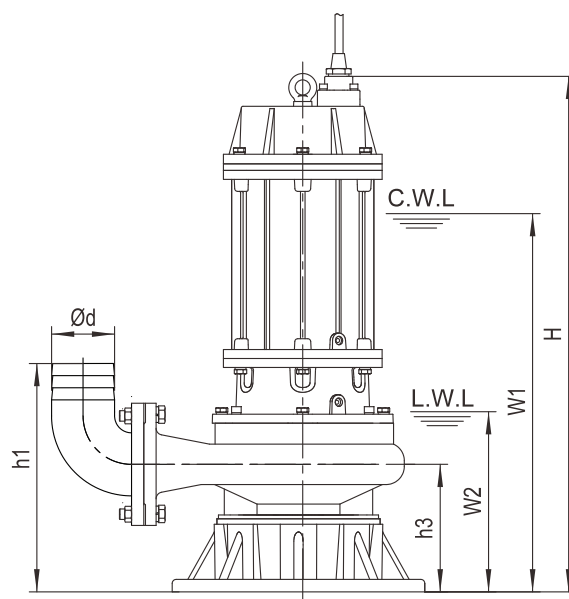
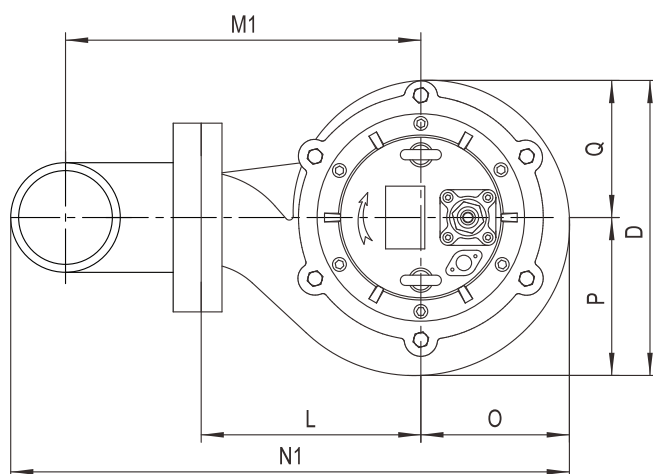
No.	Part Name	Material
01	Hose Coupling	Cast Iron
01a	Hose Coupling	Cast Iron
03	Terminal Box	Cast Iron
05	Upper Cover	Cast Iron
06	Up-Bearing House	Cast Iron
07	Bearing House	Cast Iron
10	Seal Bracket	Cast Iron
11	Motor Body	Cast Iron
13	Pump Body	Cast Iron
14	Impeller	Cast Iron
17	Coupling Adapter	Cast Iron
22	Seat Assembly	Cast Iron
22a	Coupling Seat	Cast Iron
22b	Upper Guide Support	Cast Iron
27	Stator	
28	Rotor	Shaft: AISI304SS
30	Flange	Cast Iron
31a	Bearing (Ball Type)	
31b	Bearing (Ball Type)	
33	Motor Protector	
34	Mechanical Seal	SiC-SiC
47	Cable	



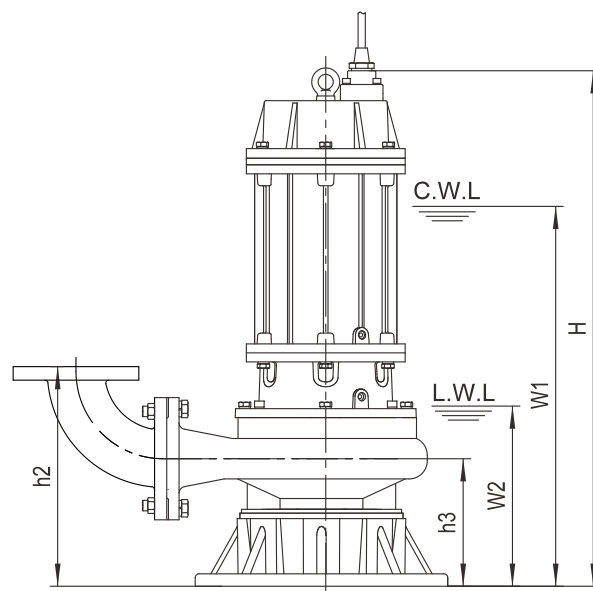
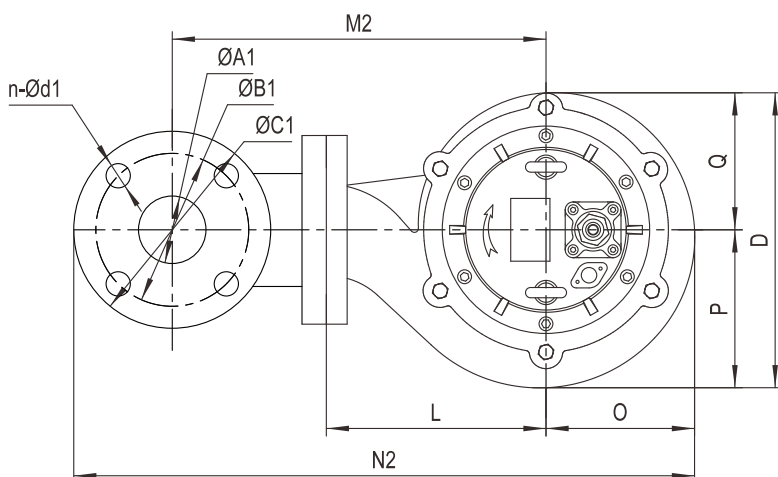


Model	Voltage	Current	Motor Power	Outlet		Rated Capacity	Rated Head	Max. Capacity	Max. Head	Impeller Passage	Cable
	V	A	kW	in	mm	m³/hr	m	m³/hr	m	mm	mm²
100B45.5	415	11.7	5.5	4	100	65	15	150	19	50	4G2.5
150B45.5	415	11.7	5.5	6	150	110	10	200	16	55	4G2.5
100B47.5	415	15.7	7.5	4	100	100	15	170	24	50	4G4.0
150B47.5	415	15.7	7.5	6	150	150	10	240	16	75	4G4.0
200B47.5	415	15.7	7.5	8	200	250	6	400	12	75	4G4.0

Movable Soft Pipe Installation (R)



Movable Hard Pipe Installation (Y)

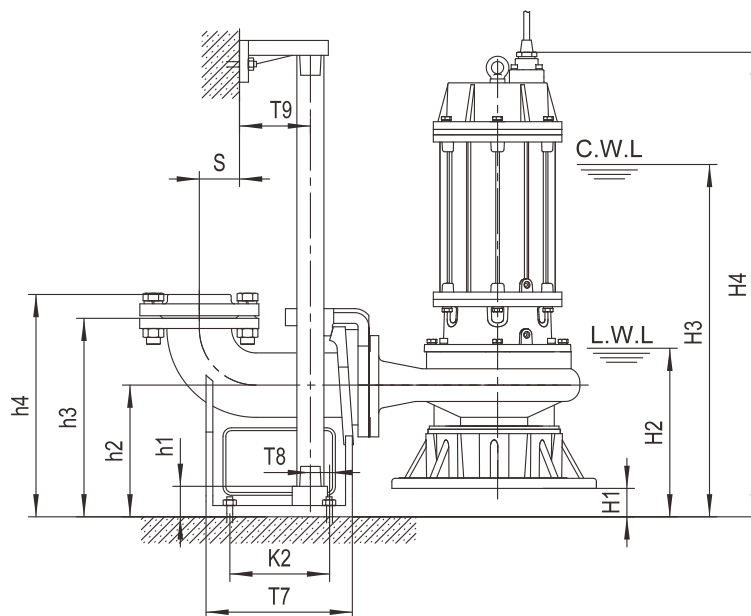
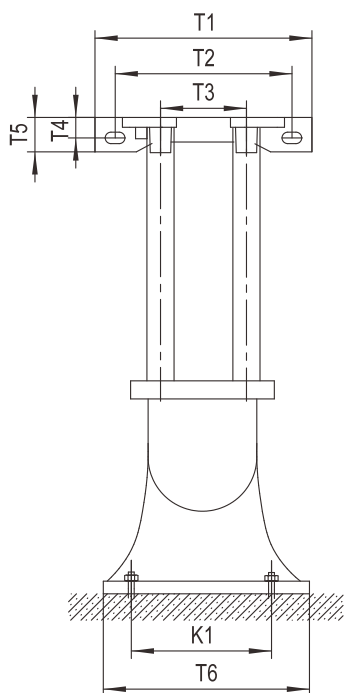


C.W.L. : Continuous running water level
L.W.L. : Lowest running water level

Model	Ød	G	ØA1	ØB1	ØC1	n-Ød1	h1	h2	h3	W1	W2	H	O	P	Q	L	D	M1	M2	N1	N2
mm																					
100B45.5	100	—	100	170	210	4-Ø18	360	340	190	585	255	805	190	202	180	280	382	382	432	622	727
150B45.5	150	—	150	225	265	8-Ø18	430	405	205	615	285	835	200	215	185	300	400	452	502	726	834
100B47.5	100	—	100	170	210	4-Ø18	360	340	190	630	255	850	190	202	180	280	382	382	432	622	727
150B47.5	150	—	150	225	265	8-Ø18	430	405	205	660	285	880	200	215	185	300	400	452	502	726	834
200B47.5	200	—	200	295	340	8-Ø22	540	460	230	695	320	915	230	255	192	350	447	552	582	882	982

Model	R			Y		
	N.W.	G.W.	Packing Dimension	N.W.	G.W.	Packing Dimension
	kg	kg	mm	kg	kg	mm
100B45.5	143	156	934x414x555	149	162	934x414x585
150B45.5	154	167	964x444x585	162	175	964x444x625
100B47.5	159	172	984x414x555	165	178	984x414x585
150B47.5	172	184	1014x444x585	180	192	1014x444x625
200B47.5	203	218	730x490x1090	211	226	730x490x1090

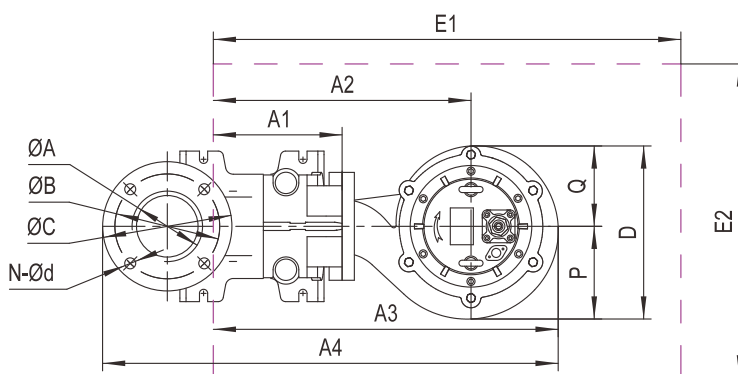
Auto-Coupled Installation (Z)



C.W.L : Continuous running water level

L.W.L : Lowest running water level

The coupling and pump will be packed individually, packing dimension and weight in table only refer to the pump, please refer to P48 to check coupling's packing dimension and weight.



Auto Coupling	ØA	ØB	ØC	N-Ød	T1	T2	T3	T4	T5	T6	T7	T8	T9	K1	K2	S	h1	h2	h3	h4
mm																				
100-100(PN6)	Ø100(G4")	170	210	4-Ø18	365	305	170	32	55	295	260	35	95	265	175	100	25	230	350	380
150-150(PN6)	Ø150	225	265	8-Ø18	400	260	280	24	48	400	410	75	95	280	300	200	390	300	480	—
200-200(PN10)	Ø200	295	340	8-Ø22	400	260	280	24	48	400	445	100	95	300	355	230	440	325	555	—

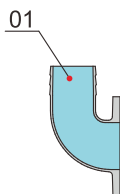
Model	Auto Coupling	H1	H2	H3	H4	A1	A2	A3	A4	P	Q	D	E1xE2	Packing Dimension	N.W.	G.W.
mm																
100B45.5	100-100(PN6)	42	295	625	845	200	480	670	875	202	180	382	900x600	934x414x555	137	150
150B45.5	150-150(PN6)	93	380	710	930	285	585	785	1125	215	185	400	1000x600	964x444x585	142	155
100B47.5	100-100(PN6)	42	295	670	890	200	480	670	875	202	180	382	900x600	984x414x555	153	166
150B47.5	150-150(PN6)	93	380	755	975	285	585	785	1125	215	185	400	1000x600	1014x444x585	160	172
200B47.5	200-200(PN10)	95	415	790	1010	285	635	865	1263	255	192	447	1050x650	730x490x1090	178	193

4P (1450rpm) | 11 - 22kW | 50Hz

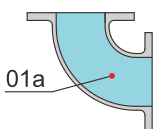
Specification

- Insulation: F
- Protection Class: IP68
- Starting Method: Reduce-Voltage Starting
- Liquid Temperature: up to 40°C
- Liquid pH: 6-10
- Density of Liquid: 1.3g/cm³
- Power Supply: Three Phase - 415V ±10%, 50Hz
- Capacity: up to 860m³/hr
- Head: up to 44m
- Maximum Immersion Depth: 20m
- Cable Length: 8m

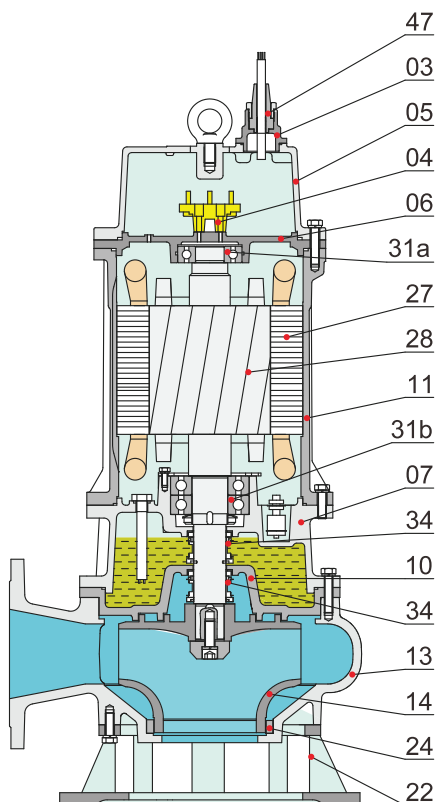
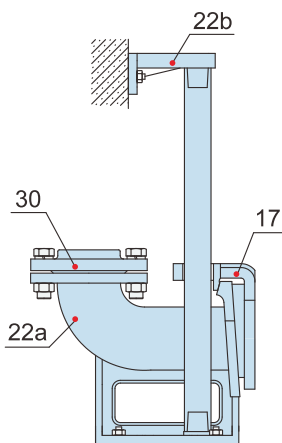
Movable Soft Pipe Installation (R)



Movable Hard Pipe Installation (Y)

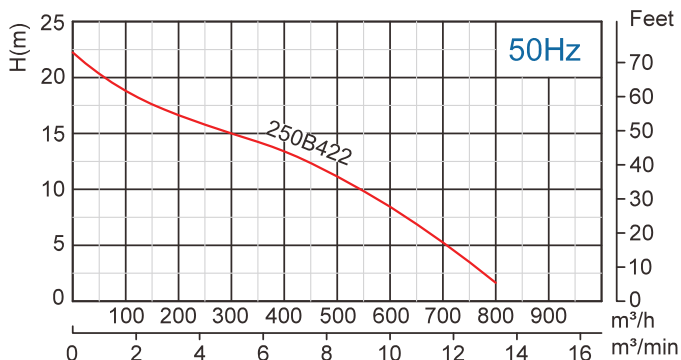
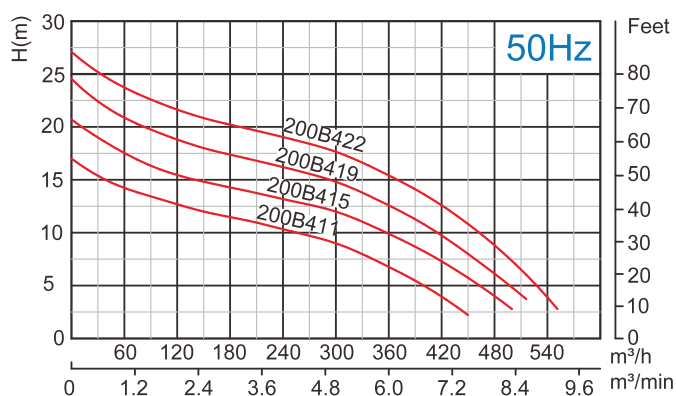
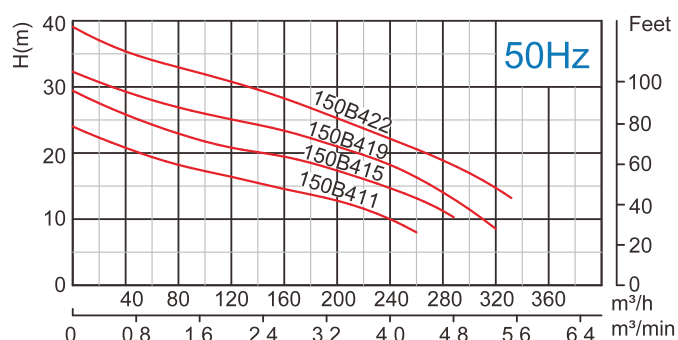
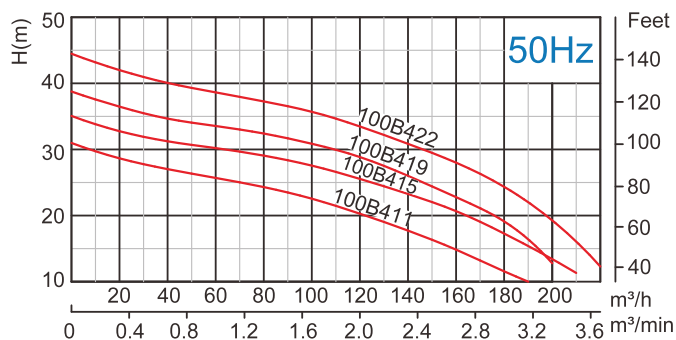


Auto-Coupled Installation (Z)



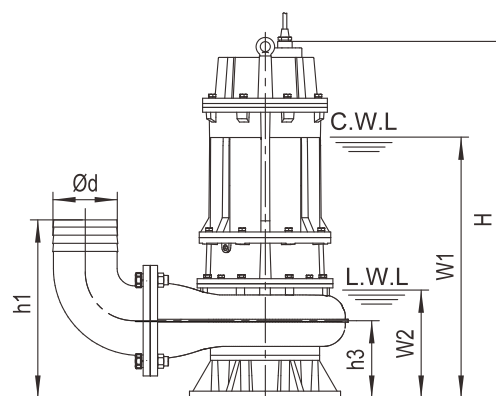
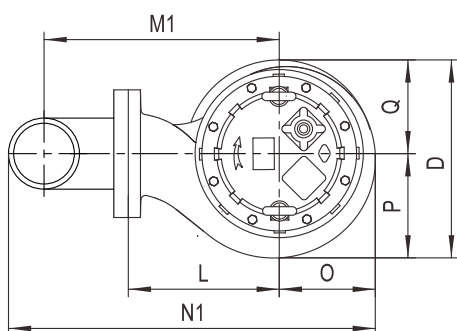
Material of Construction

No.	Part Name	Material
01	Hose Coupling	Cast Iron
01a	Hose Coupling	Cast Iron
03	Terminal Box	Cast Iron
04	Wiring Terminal	
05	Upper Cover	Cast Iron
06	Up-Bearing House	Cast Iron
07	Bearing House	Cast Iron
10	Seal Bracket	Cast Iron
11	Motor Body	Cast Iron
13	Pump Body	Cast Iron
14	Impeller	Cast Iron
17	Coupling Adapter	Cast Iron
22	Seat Assembly	Cast Iron
22a	Coupling Seat	Cast Iron
22b	Upper Guide Support	Cast Iron
24	Neck Ring	High Chrome Alloy
27	Stator	
28	Rotor	Shaft: AISI304SS
30	Flange	Cast Iron
31a	Bearing (Ball Type)	
31b	Bearing (Ball Type)	
34	Mechanical Seal	SiC-SiC
47	Cable	

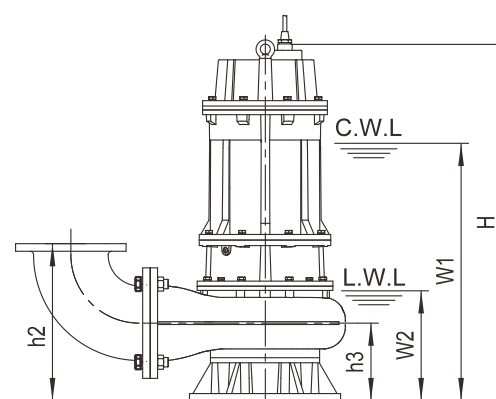
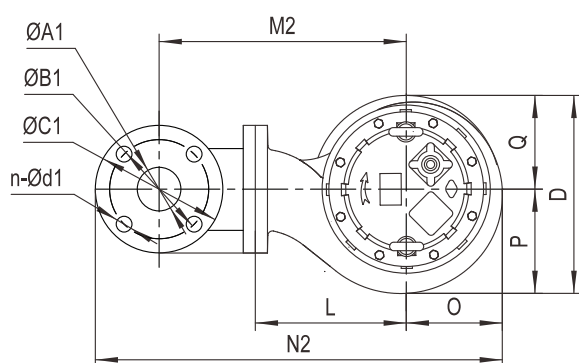


Model	Voltage	Current	Motor Power	Outlet		Rated Capacity	Rated Head	Max. Capacity	Max. Head	Impeller Passage	Cable
	V	A	kW	in	mm	m³/hr	m	m³/hr	m	mm	mm²
100B411	415	22	11	4	100	100	22	190	31/28	50	4G4.0
150B411	415	22	11	6	150	150	15	260	24	60	4G4.0
200B411	415	22	11	8	200	300	9	450/475	17	70	4G4.0
100B415	415	30.1	15	4	100	100	27	210	35	50	4G6.0
150B415	415	30.1	15	6	150	150	20	290	29	60	4G6.0
200B415	415	30.1	15	8	200	300	12	490	21	70	4G6.0
100B419	415	38	19	4	100	100	31	200	38	50	4G10.0
150B419	415	38	19	6	150	150	24	300	32	60	4G10.0
200B419	415	38	19	8	200	300	15	530	25	70	4G10.0
100B422	415	45	22	4	100	100	36	220	44	50	4G10.0
150B422	415	45	22	6	150	150	28	330	39	60	4G10.0
200B422	415	45	22	8	200	300	18	550	27	70	4G10.0
250B422	415	45	22	10	250	500	11	800	22	70	4G10.0

Movable Soft Pipe Installation (R)



Movable Hard Pipe Installation (Y)

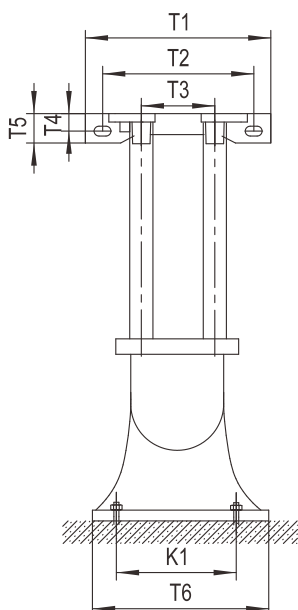


C.W.L. : Continuous running water level
L.W.L. : Lowest running water level

Model	Ød	G	ØA1	ØB1	ØC1	n-Ød1	h1	h2	h3	W1	W2	H	O	P	Q	L	D	M1	M2	N1	N2
mm																					
100B411	100	—	100	170	210	4-Ø18	355	335	185	650	255	910	210	217	210	310	427	412	462	672	777
150B411	150	—	150	225	265	8-Ø18	440	415	215	680	285	940	210	225	210	320	435	472	522	757	865
200B411	200	—	200	295	340	8-Ø22	545	465	235	720	325	980	225	253	210	340	463	542	572	868	968
100B415	100	—	100	170	210	4-Ø18	355	335	185	695	255	955	210	217	210	310	427	412	462	672	777
150B415	150	—	150	225	265	8-Ø18	440	415	215	725	285	985	210	225	210	320	435	472	522	757	865
200B415	200	—	200	295	340	8-Ø22	545	465	235	765	325	1025	225	253	210	340	463	542	572	868	968
100B419	100	—	100	170	210	4-Ø18	355	335	185	715	255	1010	218	227	210	325	437	427	477	695	800
150B419	150	—	150	225	265	8-Ø18	440	415	215	740	285	1035	220	235	210	335	445	487	537	783	890
200B419	200	—	200	295	340	8-Ø22	545	465	235	785	325	1080	233	260	210	350	470	552	582	885	985
100B422	100	—	100	170	210	4-Ø18	355	335	185	736	255	1030	218	227	210	325	437	427	477	695	800
150B422	150	—	150	225	265	8-Ø18	440	415	215	760	285	1055	220	235	210	335	446	487	537	783	890
200B422	200	—	200	295	340	8-Ø22	545	465	235	805	325	1100	233	260	210	350	470	552	582	885	985
250B422	—	—	250	350	395	12-Ø22	—	545	275	860	400	1160	280	313	270	400	583	—	673	—	1150

Model	R			Y		
	N.W.	G.W.	Packing Dimension	N.W.	G.W.	Packing Dimension
	kg	kg	mm	kg	kg	mm
100B411	253	271	700x470x1100	259	277	700x470x1100
150B411	256	274	700x470x1130	264	282	700x470x1130
200B411	280	299	700x500x1170	288	307	700x500x1170
100B415	275	293	700x470x1150	281	299	700x470x1150
150B415	277	295	700x470x1170	285	303	700x470x1170
200B415	302	321	700x500x1220	310	329	700x500x1220
100B419	326	345	700x480x1240	332	351	700x480x1240
150B419	327	346	700x480x1240	335	354	700x480x1240
200B419	354	373	720x510x1280	362	381	720x510x1280
100B422	346	366	700x480x1240	352	372	700x480x1240
150B422	347	367	700x480x1240	355	375	700x480x1240
200B422	374	394	720x510x1280	382	402	720x510x1280
250B422	390	411	720x600x1300	400	421	720x600x1300

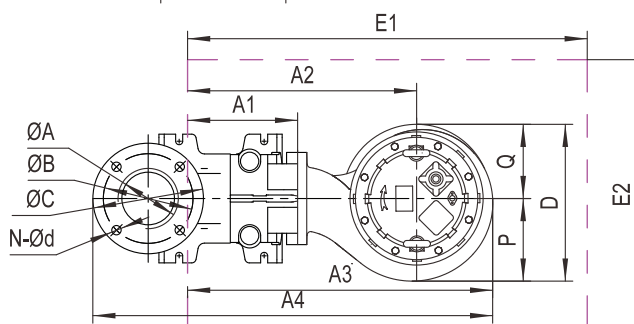
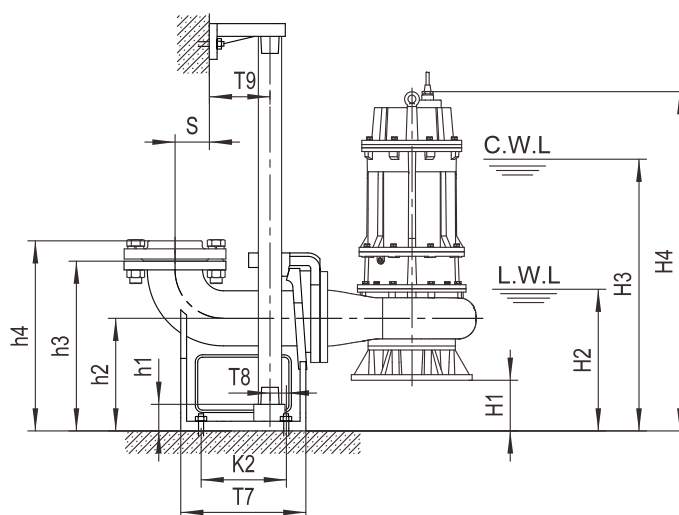
Auto-Coupled Installation (Z)



C.W.L : Continuous running water level

L.W.L : Lowest running water level

The coupling and pump will be packed individually, packing dimension and weight in table only refer to the pump, please refer to P48 to check coupling's packing dimension and weight.



Auto Coupling	ØA	ØB	ØC	N-Ød	T1	T2	T3	T4	T5	T6	T7	T8	T9	K1	K2	S	h1	h2	h3	h4
mm																				
100-100(PN6)	Ø100(G4")	170	210	4-Ø18	365	305	170	32	55	295	260	35	95	265	175	100	25	230	350	380
150-150(PN6)	Ø150	225	265	8-Ø18	400	260	280	24	48	400	410	75	95	280	300	200	390	300	480	—
200-200(PN10)	Ø200	295	340	8-Ø22	400	260	280	24	48	400	445	100	95	300	355	230	440	325	555	—
250-250(PN10)	Ø250	350	395	12-Ø22	400	260	280	24	48	460	555	110	95	360	430	295	460	315	630	—

***Standard equipment of 150, 200, 250mm outlet dimension does not include flange.

Model	Auto Coupling	H1	H2	H3	H4	A1	A2	A3	A4	P	Q	D	E1x E2	Packing Dimension	N.W.	G.W.
mm														mm	kg	kg
100B411	100-100(PN6)	45	300	695	955	200	510	720	925	217	210	427	900x600	700x470x1100	247	265
150B411	150-150(PN6)	85	370	765	1025	285	605	815	1155	225	210	435	1050x650	700x470x1130	244	262
200B411	200-200(PN10)	90	415	810	1070	285	625	850	1250	253	210	463	1050x650	700x500x1170	255	284
100B415	100-100(PN6)	45	300	740	1000	200	510	720	925	217	210	427	900x600	700x470x1150	269	287
150B415	150-150(PN6)	85	370	810	1070	285	605	815	1155	225	210	435	1050x650	700x470x1170	265	283
200B415	200-200(PN10)	90	415	855	1115	285	625	850	1250	253	210	463	1050x650	700x500x1220	277	296
100B419	100-100(PN6)	45	300	760	1055	200	525	743	950	227	210	437	900x600	700x480x1240	320	339
150B419	150-150(PN6)	85	375	825	1120	285	620	840	1180	235	210	445	1050x650	700x480x1240	315	334
200B419	200-200(PN10)	90	420	875	1170	285	635	868	1265	260	210	470	1050x650	720x510x1280	329	348
100B422	100-100(PN6)	45	300	780	1075	200	525	743	950	227	210	437	900x600	700x480x1240	340	360
150B422	150-150(PN6)	85	375	845	1140	285	620	840	1180	235	210	445	1050x650	700x480x1240	335	355
200B422	200-200(PN10)	90	420	895	1190	285	635	868	1265	260	210	470	1050x650	720x510x1280	349	369
250B422	250-250(PN10)	40	400	860	1160	310	710	990	1482	313	210	583	1100x850	720x600x1300	360	381

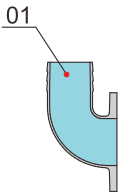
4P (1450rpm) | 30 - 45kW | 50Hz

Specification

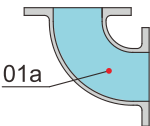
- Insulation: F
- Protection Class: IP68
- Starting Method: Reduce-Voltage Starting
- Liquid Temperature: up to 40°C
- Liquid pH: 6-10
- Density of Liquid: 1.3g/cm³
- Power Supply: Three Phase - 415V ±10%, 50Hz
- Capacity: up to 1200m³/hr
- Head: up to 50m
- Maximum Immersion Depth: 20m
- Cable Length: 8m



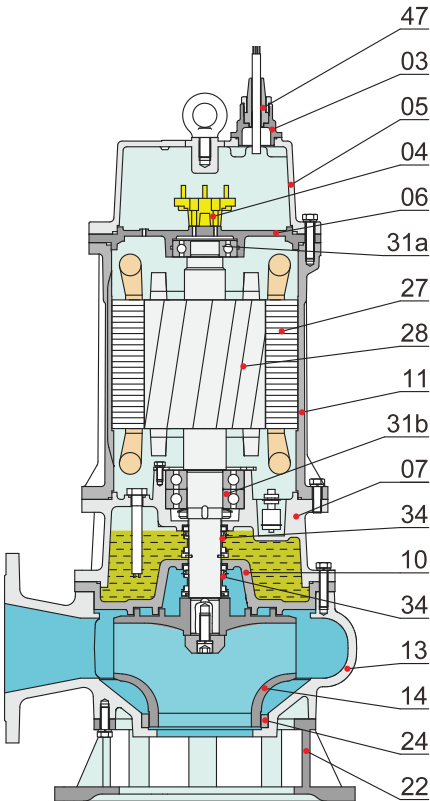
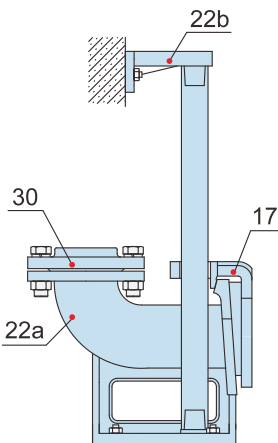
Movable Soft Pipe Installation (R)



Movable Hard Pipe Installation (Y)

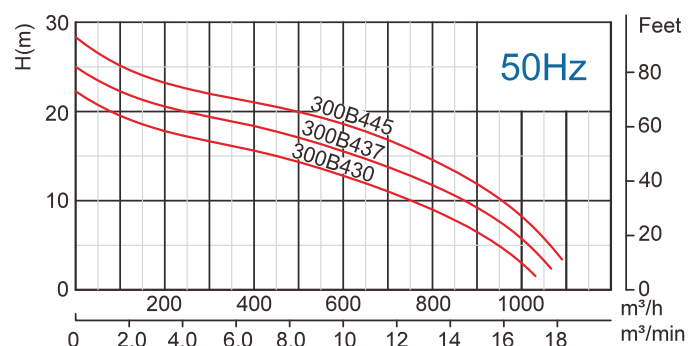
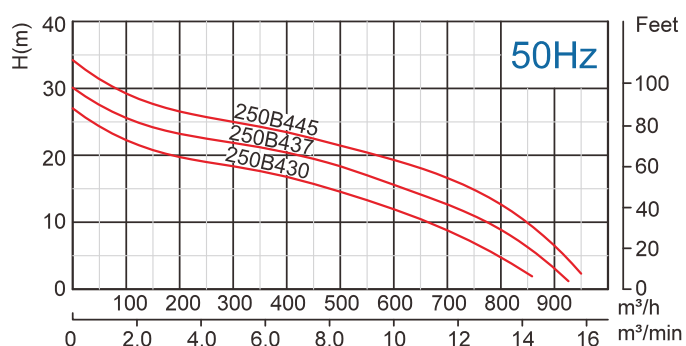
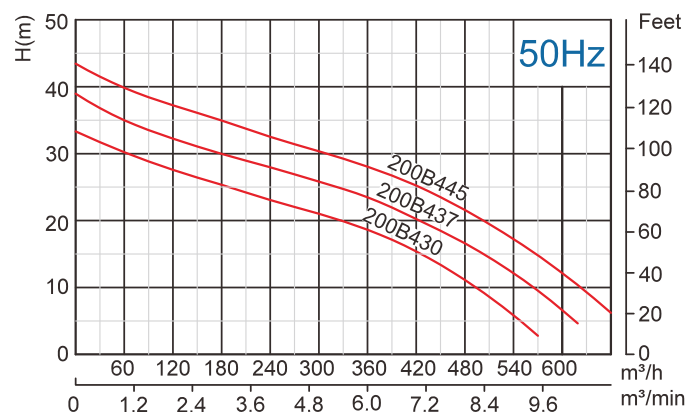
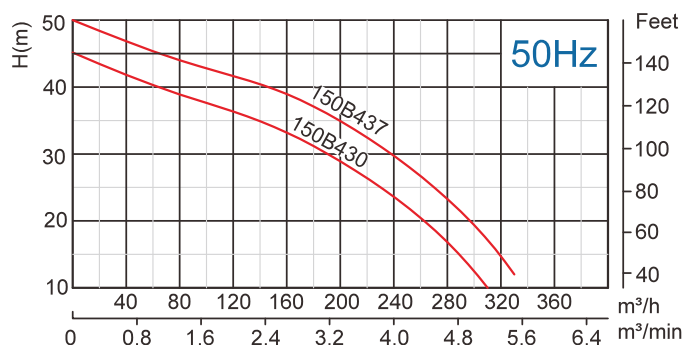


Auto-Coupled Installation (Z)



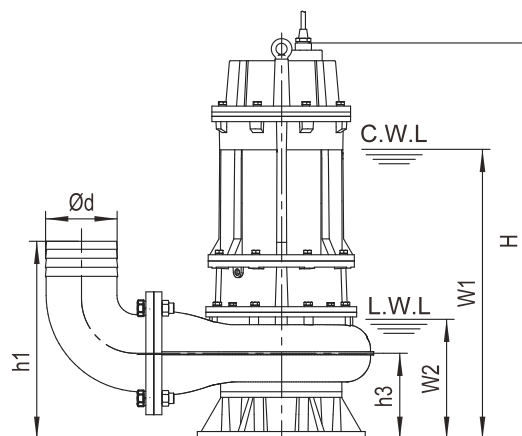
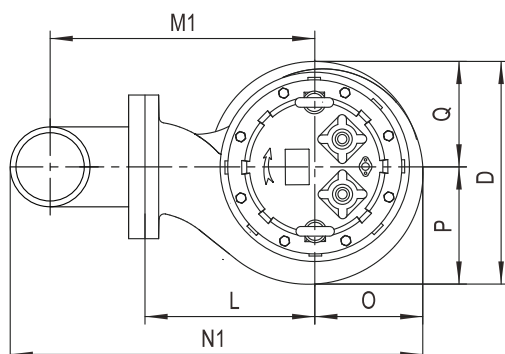
Material of Construction

No.	Part Name	Material
01	Hose Coupling	Cast Iron
01a	Hose Coupling	Cast Iron
03	Terminal Box	Cast Iron
04	Wiring Terminal	
05	Upper Cover	Cast Iron
06	Up-Bearing House	Cast Iron
07	Bearing House	Cast Iron
10	Seal Bracket	Cast Iron
11	Motor Body	Cast Iron
13	Pump Body	Cast Iron
14	Impeller	Ductile Iron
17	Coupling Adapter	Cast Iron
22	Seat Assembly	Cast Iron
22a	Coupling Seat	Cast Iron
22b	Upper Guide Support	Cast Iron
24	Neck Ring	High Chrome Alloy
27	Stator	
28	Rotor	Shaft: AISI304SS
30	Flange	Cast Iron
31a	Bearing (Ball Type)	
31b	Bearing (Ball Type)	
34	Mechanical Seal	SiC-SiC
47	Cable	

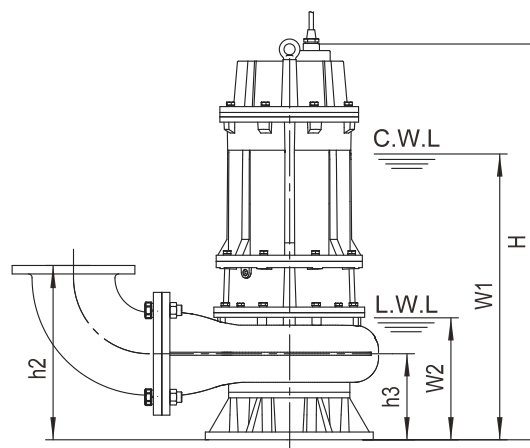
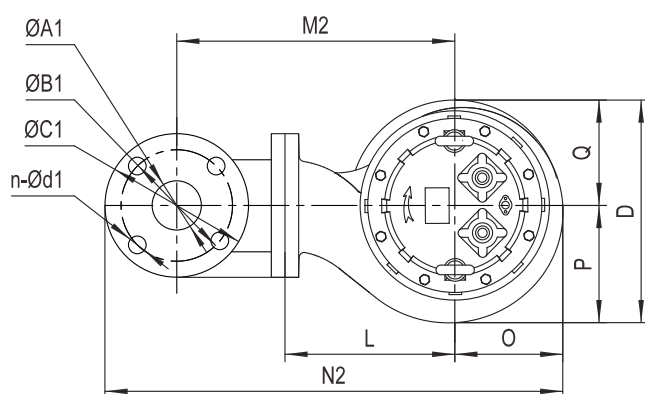


Model	Voltage	Current	Motor Power	Outlet		Rated Capacity	Rated Head	Max. Capacity	Max. Head	Impeller Passage
	V	A	kW	in	mm	m³/hr	m	m³/hr	m	mm
150B430	415	57.6	30	6	150	150	34	310	45	55
200B430	415	57.6	30	8	200	300	21	570	33	80
250B430	415	57.6	30	10	250	500	14	860	27/25	85
300B430	415	57.6	30	12	300	800	8	1040	22	90
150B437	415	69.8	37	6	150	150	40	330	50	55
200B437	415	69.8	37	8	200	300	25	620	39	80
250B437	415	69.8	37	10	250	500	18	930	30	85
300B437	415	69.8	37	12	300	800	11	1060	25	90
200B445	415	84.5	45	8	200	300	30	660	43	80
250B445	415	84.5	45	10	250	500	21	950	34	85
300B445	415	84.5	45	12	300	800	14	1080	28	90

Movable Soft Pipe Installation (R)



Movable Hard Pipe Installation (Y)



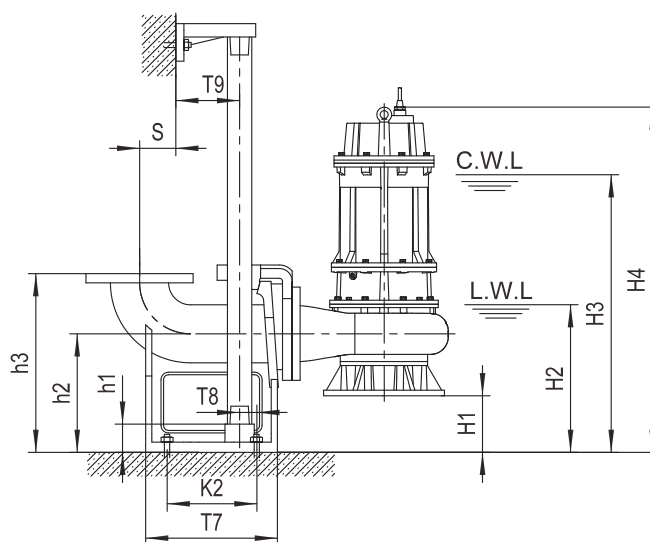
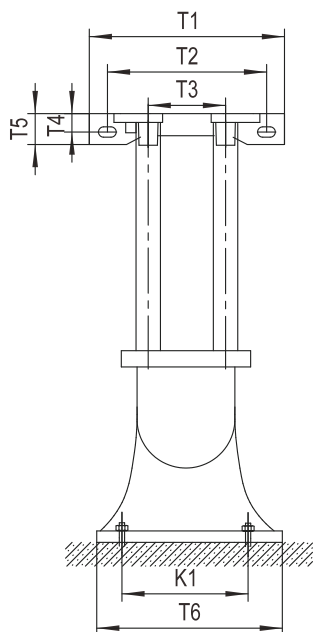
C.W.L : Continuous running water level
L.W.L : Lowest running water level

Model	Ød	G	ØA1	ØB1	ØC1	n-Ød1	h1	h2	h3	W1	W2	H	O	P	Q	L	D	M1	M2	N1	N2
	mm																				
150B430	150	—	150	240	280	8-Ø22	475	450	250	855	340	1200	272	283	270	380	553	532	582	879	997
200B430	200	—	200	295	340	8-Ø22	580	500	270	895	380	1240	286	308	270	390	578	592	622	978	1078
250B430	—	—	250	350	395	12-Ø22	—	545	275	920	400	1265	300	332	270	410	602	—	683	—	1181
300B430	—	—	300	400	445	12-Ø22	—	630	310	970	450	1315	340	386	290	480	676	—	803	—	1365
150B437	150	—	150	240	280	8-Ø22	475	450	250	850	340	1255	272	283	270	380	553	532	582	879	997
200B437	200	—	200	295	340	8-Ø22	580	500	270	890	380	1295	286	308	270	390	578	592	622	978	1078
250B437	—	—	250	350	395	12-Ø22	—	545	275	910	400	1315	300	332	270	410	602	—	683	—	1181
300B437	—	—	300	400	445	12-Ø22	—	630	310	960	450	1365	340	386	290	480	676	—	803	—	1365
200B445	200	—	200	295	340	8-Ø22	580	500	270	930	380	1295	286	308	270	390	578	592	622	978	1078
250B445	—	—	250	350	395	12-Ø22	—	545	275	950	400	1315	300	332	270	410	602	—	683	—	1181
300B445	—	—	300	400	445	12-Ø22	—	630	310	1000	450	1365	340	386	290	480	676	—	803	—	1365

***Standard equipment of 150, 200, 250mm outlet dimension does not include flange.

Model	R			Y		
	N.W. kg	G.W. kg	Packing Dimension mm	N.W. kg	G.W. kg	Packing Dimension mm
150B430	497	519	780x600x1430	505	527	780x600x1430
200B430	519	541	820x620x1470	527	549	820x620x1470
250B430	512	535	780x650x1490	559	582	780x650x1490
300B430	557	581	860x720x1540	602	626	860x720x1540
150B437	557	579	780x600x1480	565	587	780x600x1480
200B437	576	598	820x620x1520	584	606	820x620x1520
250B437	570	593	780x650x1540	617	640	780x650x1540
300B437	614	638	860x720x1590	659	683	860x720x1590
200B445	612	634	820x620x1520	620	642	820x620x1520
250B445	606	629	780x650x1540	653	676	780x650x1540
300B445	650	674	860x720x1590	695	719	860x720x1590

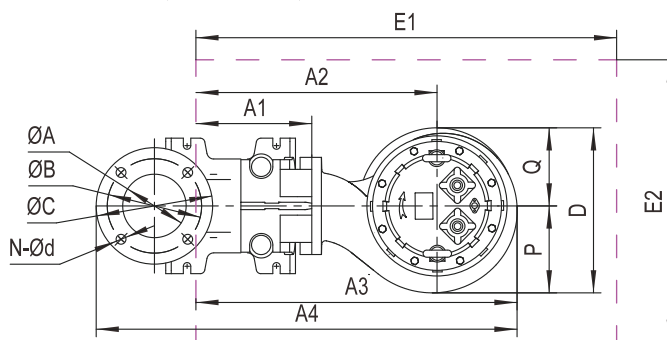
Auto-Coupled Installation (Z)



C.W.L : Continuous running water level

L.W.L : Lowest running water level

The coupling and pump will be packed individually, packing dimension and weight in table only refer to the pump, please refer to P48 to check coupling's packing dimension and weight.



Auto Coupling	ØA	ØB	ØC	N-Ød	T1	T2	T3	T4	T5	T6	T7	T8	T9	K1	K2	S	h1	h2	h3	h4
mm																				
150-150(PN10)	Ø150	240	280	8-Ø22	400	260	280	24	48	400	410	75	95	280	300	200	390	300	480	—
200-200(PN10)	Ø200	295	340	8-Ø22	400	260	280	24	48	400	445	100	95	300	355	230	440	325	555	—
250-250(PN10)	Ø250	350	395	12-Ø22	400	260	280	24	48	460	555	110	95	360	430	295	460	315	630	—
300-300(PN10)	Ø300	400	445	12-Ø22	520	340	375	32	65	550	600	140	110	445	465	280	480	415	730	—

***Standard equipment of 150, 200, 250mm outlet dimension does not include flange.

Model	Auto Coupling	H1	H2	H3	H4	A1	A2	A3	A4	P	Q	D	E1xE2	Packing Dimension	N.W.	G.W.
mm														mm	kg	kg
150B430	150-150(PN10)	50	390	905	1250	285	665	935	1275	283	270	553	1150x700	780x600x1430	485	507
200B430	200-200(PN10)	55	435	950	1295	285	675	960	1360	308	270	578	1150x800	820x620x1470	494	516
250B430	250-250(PN10)	40	440	960	1305	310	720	1020	1510	332	270	602	1250x800	780x650x1490	512	535
300B430	300-300(PN10)	105	555	1075	1420	380	860	1200	1700	386	290	676	1400x800	860x720x1540	557	581
150B437	150-150(PN10)	50	390	900	1305	285	665	935	1275	283	270	553	1150x750	780x600x1480	545	567
200B437	200-200(PN10)	55	435	945	1350	285	675	960	1360	308	270	578	1150x800	820x620x1520	551	573
250B437	250-250(PN10)	40	440	950	1355	310	720	1020	1510	332	270	602	1250x800	780x650x1540	570	593
300B437	300-300(PN10)	105	555	1065	1470	380	860	1200	1700	386	290	676	1400x800	860x720x1590	614	638
200B445	200-200(PN10)	55	435	985	1350	285	675	960	1360	308	270	578	1150x800	820x620x1520	587	609
250B445	250-250(PN10)	40	440	990	1355	310	720	1020	1510	332	270	602	1250x800	780x650x1540	606	629
300B445	300-300(PN10)	105	555	1105	1470	380	860	1200	1700	386	290	676	1400x800	860x720x1590	650	674

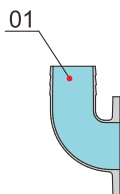
4P (1450rpm) | 55 - 75kW | 50Hz

6P (980rpm) | 45 - 55kW | 50Hz

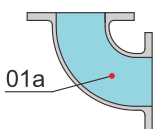
Specification

- Insulation: F
- Protection Class: IP68
- Starting Method: Reduce-Voltage Starting
- Liquid Temperature: up to 40°C
- Liquid pH: 6-10
- Density of Liquid: 1.3g/cm³
- Power Supply: Three Phase - 415V ±10%, 50Hz
- Capacity: up to 1900m³/hr
- Head: up to 61m
- Maximum Immersion Depth: 20m
- Cable Length: 10m

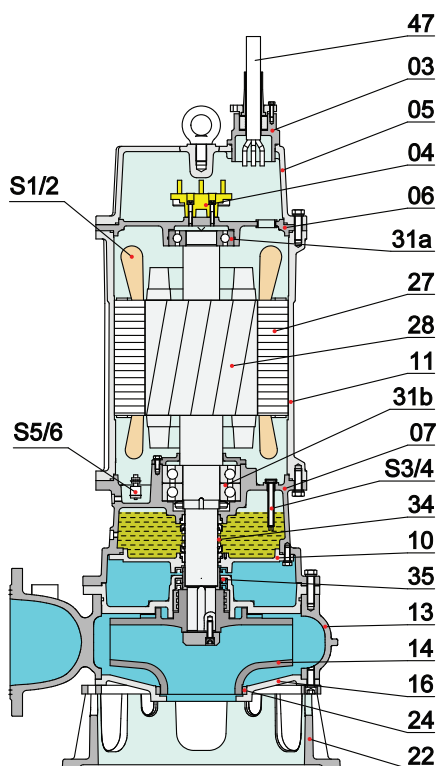
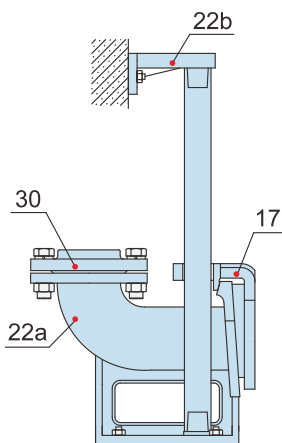
Movable Soft Pipe Installation (R)



Movable Hard Pipe Installation (Y)

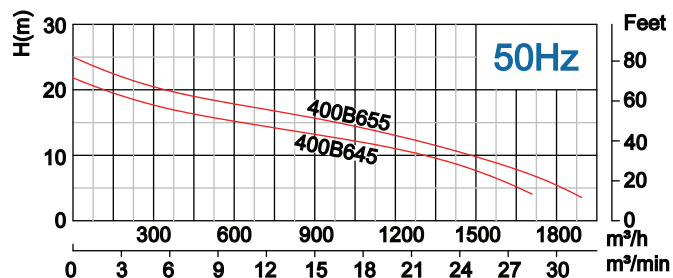
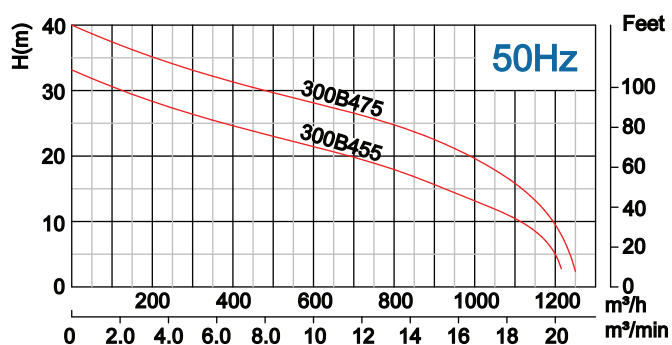
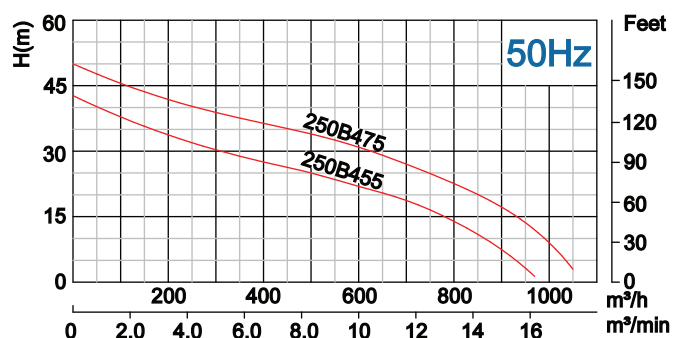
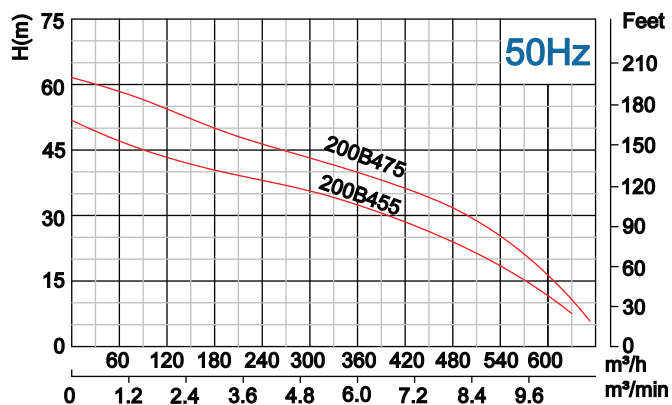


Auto-Coupled Installation (Z)



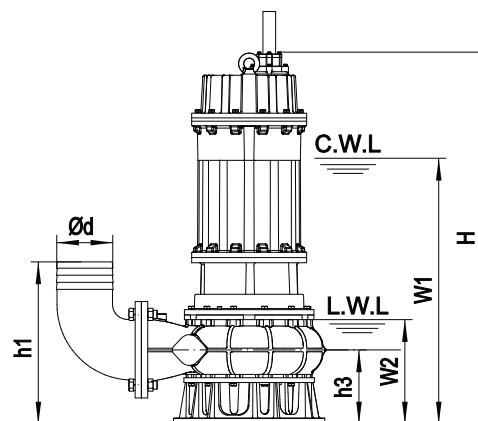
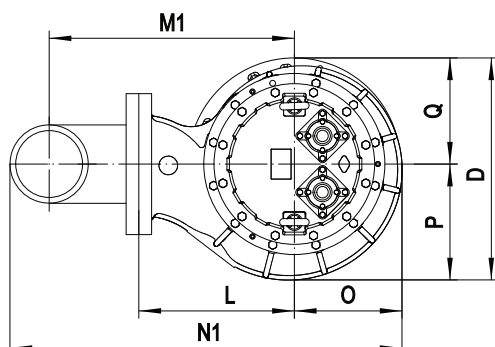
Material of Construction

No.	Part Name	Material
01	Hose Coupling	Cast Iron
01a	Hose Coupling	Cast Iron
03	Terminal Box	Cast Iron
04	Wiring Terminal	
05	Upper Cover	Cast Iron
06	Up-Bearing House	Cast Iron
07	Bearing House	Cast Iron
10	Seal Bracket	Cast Iron
11	Motor Body	Cast Iron
13	Pump Body	Cast Iron
14	Impeller	Ductile Iron
17	Coupling Adapter	Cast Iron
22	Seat Assembly	Cast Iron
22a	Coupling Seat	Cast Iron
22b	Upper Guide Support	Cast Iron
24	Neck Ring	High Chrome Alloy
27	Stator	
28	Rotor	Shaft: AISI420SS
30	Flange	Cast Iron
31a	Bearing (Ball Type)	
31b	Bearing (Ball Type)	
34	Mechanical Seal	SiC-SiC
35	Oil Seal	
47	Cable	
S1/2	Overheat Protector: On Option	
S3/4	Oil Water Leakage Probe: On Option	
S5/6	Floating Switch: On Option	

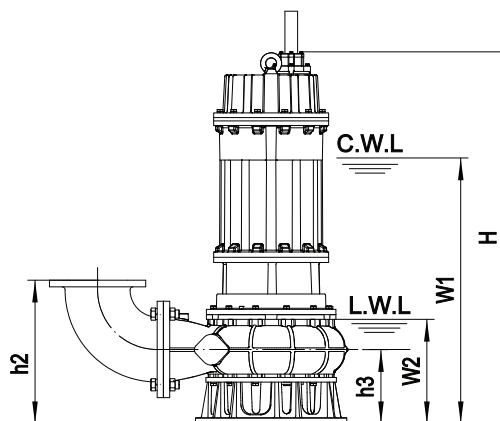
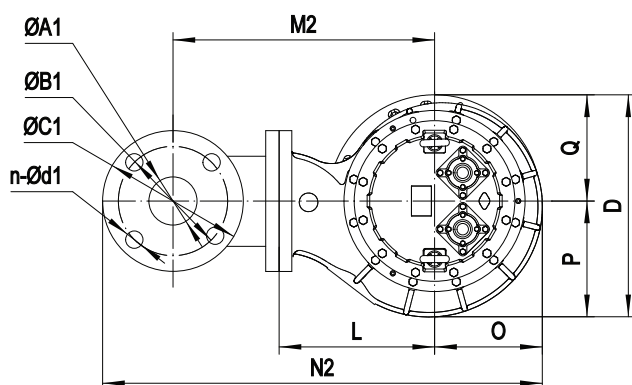


Model	Voltage	Current	Motor Power	Outlet		Rated Capacity	Rated Head	Max. Capacity	Max. Head	Impeller Passage
	V	A	kW	in	mm	m³/hr	m	m³/hr	m	mm
200B455	415	105	55	8	200	300	36/33	630	51	80
250B455	415	105	55	10	250	500	25	970	42	90
300B455	415	105	55	12	300	800	18	1210	33	90
200B475	415	141	75	8	200	300	45/44	650	61	80
250B475	415	141	75	10	250	500	34	1050	50	90
300B475	415	141	75	12	300	800	25	1250	40	90
400B645	415	85	45	16	400	1200	11	1750/1700	22/18	120
400B655	415	105	55	16	400	1200	13	1900/1800	25/21	120

Movable Soft Pipe Installation (R)



Movable Hard Pipe Installation (Y)



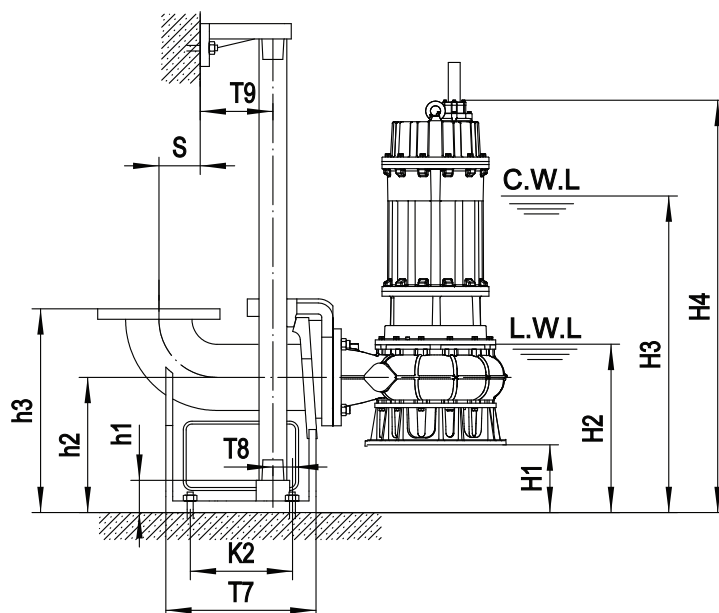
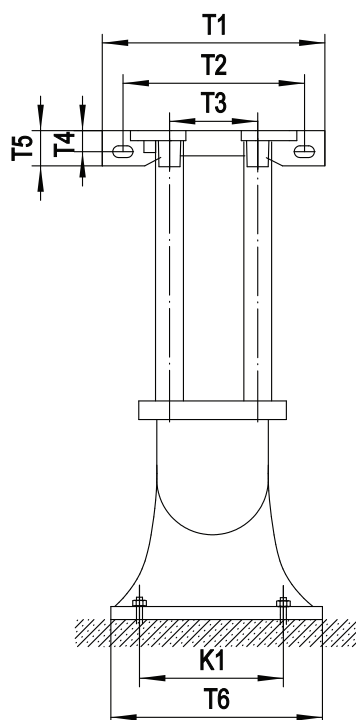
C.W.L : Continuous running water level
L.W.L : Lowest running water level

Model	Ød	G	ØA1	ØB1	ØC1	n-Ød1	h1	h2	h3	W1	W2	H	O	P	Q	L	D	M1	M2	N1	N2
mm																					
200B455	200	—	200	295	340	8-Ø22	604	524	294	1050	400	1540	320	323	320	440	643	643	673	1063	1163
250B455	250	—	250	350	395	12-Ø22	672	582	312	1080	440	1575	320	349	320	460	669	698	733	1143	1250
300B455	300	—	300	400	445	12-Ø22	—	649	329	1110	470	1610	359	398	320	490	718	—	813	—	1394
200B475	200	—	200	295	340	8-Ø22	604	524	294	1110	400	1540	320	323	320	440	643	643	673	1063	1163
250B475	250	—	250	350	395	12-Ø22	672	582	312	1140	440	1575	320	349	320	460	669	698	733	1143	125
300B475	300	—	300	400	445	12-Ø22	—	649	329	1170	470	1610	359	398	320	490	718	—	813	—	1394
400B645	400	—	400	515	565	16-Ø27	—	764	364	1190	540	1674	430	490	367	600	857	—	1004	—	1716
400B655	400	—	400	515	565	16-Ø27	—	764	364	1230	540	1674	430	490	367	600	857	—	1004	—	1716

***Standard equipment of 150, 200, 250mm outlet dimension does not include flange.

Model	R			Y		
	N.W.	G.W.	Packing Dimension	N.W.	G.W.	Packing Dimension
	kg	kg	mm	kg	kg	mm
200B455	809	841	940x720x1860	817	849	920x700x1890
250B455	802	834	860x740x1900	849	881	840x720x1930
300B455	829	864	920x790x1930	879	914	900x770x1960
200B475	884	916	940x720x1860	892	924	920x700x1890
250B475	872	904	840x740x1900	919	951	840x740x1900
300B475	903	938	920x790x1930	953	988	920x790x1930
400B645	930	975	1100x930x2000	975	1020	1100x930x2000
400B655	978	1023	1100x930x2000	1028	1073	1100x930x2000

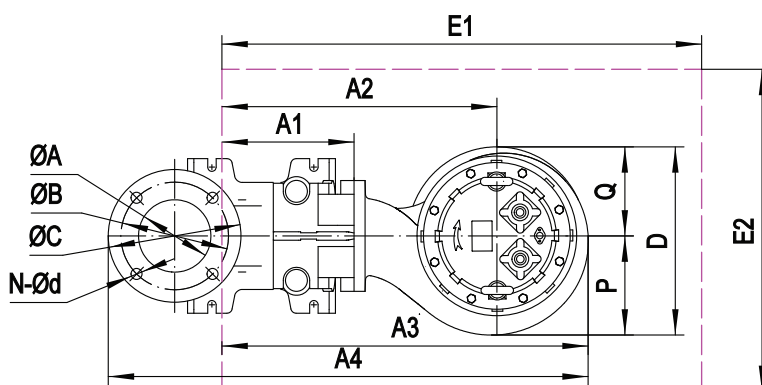
Auto-Coupled Installation (Z)



C.W.L : Continuous running water level

L.W.L : Lowest running water level

The coupling and pump will be packed individually, packing dimension and weight in table only refer to the pump, please refer to P54 to check coupling's packing dimension and weight.



Auto Coupling	ØA	ØB	ØC	N-Ød	T1	T2	T3	T4	T5	T6	T7	T8	T9	K1	K2	S	h1	h2	h3	h4
mm																				
200-200(PN10)	Ø200	295	340	8-Ø22	400	260	280	24	48	400	445	100	95	300	355	230	440	325	555	—
250-250(PN10)	Ø250	350	395	12-Ø22	400	260	280	24	48	460	555	110	95	360	430	295	460	315	630	—
300-300(PN10)	Ø300	400	445	12-Ø22	500	320	360	32	65	550	570	95	115	414	410	270	570	400	730	—
400-400(PN10)	Ø400	515	565	16-Ø27	520	340	375	32	65	620	660	100	115	495	525	365	770	480	960	—

Model	Auto Coupling	H1	H2	H3	H4	A1	A2	A3	A4	P	Q	D	E1xH2	Packing Dimension	N.W.	G.W.
mm														mm	kg	kg
200B455	200-200(PN10)	31	430	1080	1570	285	725	1045	1443	323	320	643	1300x800	920x700x1890	787	820
250B455	250-250(PN10)	3	440	1080	1580	309	769	1089	1582	349	320	669	1300x800	840x720x1930	802	834
300B455	300-300(PN10)	71	540	1180	1680	335	825	1184	1676	398	320	718	1400x900	900x770x1960	829	864
200B475	200-200(PN10)	31	430	1140	1570	285	725	1045	1443	323	320	643	1300x800	920x700x1890	861	893
250B475	250-250(PN10)	3	440	1140	1580	309	769	1089	1582	349	320	669	1300x800	920x700x1890	872	904
300B475	300-300(PN10)	71	540	1240	1680	335	825	1184	1676	398	320	718	1400x900	840x720x1930	903	938
400B645	400-400(PN10)	116	650	1310	1790	350	950	1380	2027	490	367	857	1600x1000	900x770x1960	930	975
400B655	400-400(PN10)	116	650	1350	1790	350	950	1380	2027	490	367	857	1600x1000	920x700x1890	978	1023

Auto-Coupling Data

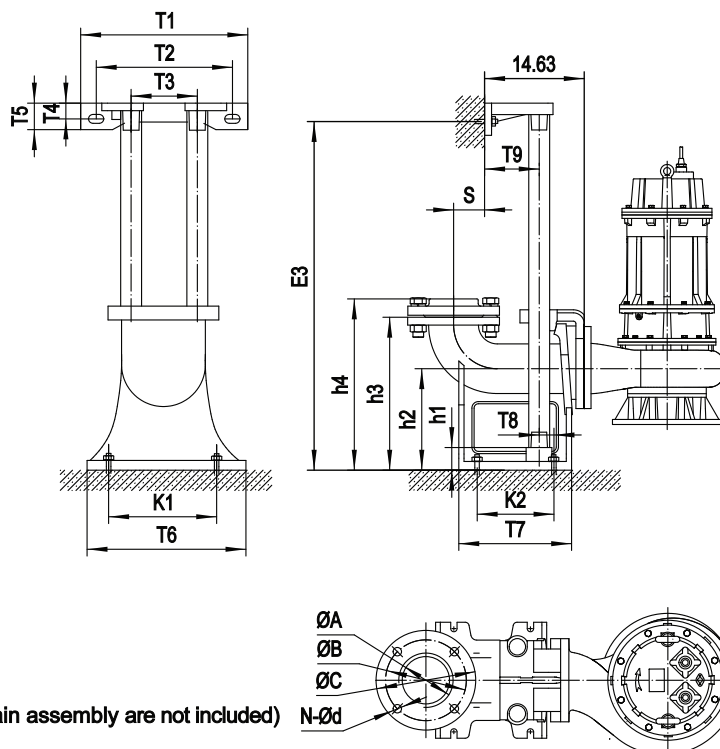


- Fix to the pumps with flange conforming ISO7005-92 standard.
- Sewage pump with standard flanged elbow can connect to this auto-coupling directly.

Supplied With

- Coupling seat
- Coupling adapter
- Upper guide support
- Flange (≤ 4 ")

(Guide Pipe, Foundation bolts , Expansion bolts and Chain assembly are not included)



Auto Coupling	ØA	ØB	ØC	N-Ød	T1	T2	T3	T4	T5	T6	T7	T8	T9	K1	K2	S	h1	h2	h3	h4
	mm																			
40-40(PN6)	Ø40(G1½")	100	130	4-Ø14	225	185	70	18	35	110	140	5	65	65	70	60	150	115	195	215
50-50(PN6)	Ø50(G2")	110	140	4-Ø14	265	215	105	25	42	200	215	15	67	165	135	63	25	160	250	280
65-65(PN6)	Ø65(G2½")	130	160	4-Ø14	280	230	125	30	50	230	235	20	70	190	155	90	25	165	265	295
80-80(PN6)	Ø80(G3")	150	190	4-Ø18	315	265	145	27	50	255	225	30	78	215	155	77	25	190	305	335
100-100(PN6)	Ø100(G4")	170	210	4-Ø18	365	305	170	32	55	295	260	35	95	265	175	100	25	230	350	380
150-150(PN6)	Ø150	225	265	8-Ø18	400	260	280	24	48	400	410	75	95	280	300	200	390	300	480	—
150-150(PN10)	Ø150	240	280	8-Ø22	400	260	280	24	48	400	410	75	95	280	300	200	390	300	480	—
200-200(PN10)	Ø200	295	340	8-Ø22	400	260	280	24	48	400	445	100	95	300	355	230	440	325	555	—
250-250(PN10)	Ø250	350	395	12-Ø22	400	260	280	24	48	460	555	110	95	360	430	295	460	315	630	—
300-300(PN10)	Ø300	400	445	12-Ø22	500	320	360	32	65	550	570	95	115	414	410	270	570	400	730	—
400-400(PN10)	Ø400	515	565	16-Ø27	520	340	375	32	65	620	660	100	115	495	525	365	770	480	960	—

***Standard equipment of 150, 200, 250mm outlet dimension does not include flange.

Model	N.W.	G.W.	Packing Dimension	Guide Pipe	
	kg	kg	mm	Size	Length
40-40(PN6)	11	13	370x260x195	1" / Ø32×3	E3-150
50-50(PN6)	17	19.5	380x320x245	1" / Ø32×3	E3-20
65-65(PN6)	24	27	420x270x345	1" / Ø32×3	E3-10
80-80(PN6)	31	34.5	440x290x395	1½" / Ø48×3	E3-20
100-100(PN6)	45	50	500x330x475	1½" / Ø48×3	E3-20
150-150(PN6)	96	119	700x440x660	1½" / Ø48×3	E3-410
150-150(PN10)	95	118	700x440x660	1½" / Ø48×3	E3-410
200-200(PN10)	125	142	770x440x700	1½" / Ø48×3	E3-460
250-250(PN10)	195	215	900x510x760	1½" / Ø48×3	E3-480
300-300(PN10)	285	313	920x620x890	2" / Ø60×3.5	E3-590
400-400(PN10)	450	490	1130x670x1110	2" / Ø60×3.5	E3-790

Model	Coupling	Accessory		
		Foundation Bolts	Expansion Bolts	Chain Assembly
TOPJ-01	40-40	4-M12×220	2-M10	Ø4×5m
TOPJ-02	50-50 (≤1.5kW)	4-M16×220	2-M12	Ø4×5m
TOPJ-03	50-50 (≥2.2kW), 65-65, 80-80	4-M16×220	2-M12	Ø5×5m
TOPJ-04	100-100 (≤7.5kW)	4-M20×220	2-M12	Ø5×5m
TOPJ-05	100-100 (≥11kW)	4-M20×220	2-M12	Ø6×5m
TOPJ-06	150-150 (≤22kW)	4-M20×300	3-M14	Ø6×5m
TOPJ-07	150-150 (30-45kW)	4-M20×300	3-M14	Ø8×5m
TOPJ-08	200-200 (≤22kW) 250-250 (≤22kW)	4-M24×300	3-M14	Ø6×5m
TOPJ-09	200-200 (30-45kW) 250-250 (30-45kW) 300-300 (30-45kW)	4-M24×300	3-M14	Ø8×5m
TOPJ-10	200-200 (55-75kW) 250-250 (55-75kW) 300-300 (55-75kW) 400-400 (55-75kW)	4-M24×300	3-M14	Ø10×5m

