


HYDRO BOOSTER SYSTEM

IDEALLY DESIGNED FOR WATER SUPPLY SYSTEM





SHINDO HAS
CONSTANTLY
DEVELOP
THE CREDIBILITY
TO SERVE THE
INDUSTRY
EFFICIENTLY.

SHINDO IS COMMITTED TO PROVIDE HIGH VALUE-ADDED PRODUCTS IN MINIMUM LEAD-TIME AND AT COST EFFECTIVE PRICING, TO HELP CUSTOMERS ACHIEVE ZERO DOWNTIME, PRODUCTION TARGET AND HELP ENHANCE A SAFER ENVIRONMENT.



HYDRO SYSTEM

PAGE CONTENTS

01	INTRODUCTION APPLICATION THE PUMP
02	CONTROLLER UNIT ADVANTAGES
03	GENERAL ARRANGEMENT <small>(VERTICAL PUMP SYSTEM WITH 18/24L PRESSURE TANK - VMS)</small>
04	GENERAL ARRANGEMENT <small>(VERTICAL PUMP SYSTEM WITH 100L PRESSURE TANK - VMS)</small>
05	GENERAL ARRANGEMENT <small>(HORIZONTAL PUMP SYSTEM WITH 18L PRESSURE TANK - HSI)</small>
06	GENERAL ARRANGEMENT <small>(HORIZONTAL PUMP SYSTEM WITH 18L PRESSURE TANK - DZ(S))</small>
07	DIMENSION <small>(VERTICAL PUMP SYSTEM WITH 18/24L PRESSURE TANK - VMS)</small>
08	DIMENSION <small>(VERTICAL PUMP SYSTEM WITH 100L PRESSURE TANK - VMS)</small>
09	DIMENSION <small>(HORIZONTAL PUMP SYSTEM WITH 18L PRESSURE TANK - HSI)</small>
10	DIMENSION <small>(HORIZONTAL PUMP SYSTEM WITH 18L PRESSURE TANK - DZ(S))</small>

INTRODUCTION

SHINDO HYDRO SYSTEM IS A VARIABLE SPEED BOOSTER SYSTEM WHICH PROVIDE HIGH TECHNOLOGY, EASY OPERATION AND RELIABILITY TO YOUR SYSTEM. IT IS FIT TO A WIDE RANGE OF WATER SUPPLY PURPOSES AND IT BRINGS EXCELLENT COMFORT TO USER/RESIDENTS IN ALL TYPES OF BUILDINGS AND FACILITIES. SHINDO HYDRO SYSTEM IS CONSISTS OF AT LEAST TWO UNITS OF VMS/HSI/DZ(S) PUMPS ARRANGED IN PARALLEL AND MOUNTED ON A COMMON BASEPLATE. THE PUMPSET IS INTEGRALLY PROVIDED WITH A VFD CONTROL PANEL TO ENSURE PERFECT CONTROL AND EXTREME FLEXIBILITY OF THE OUTPUT. IT ALSO SUPPLIED TOGETHER WITH NECESSARY FITTINGS ACCESSORIES, COMMON PIPING AND COMPLETE WITH THE ELECTRICAL WIRING.

APPLICATION

OUR HYDRO BOOSTER SYSTEM SUPPLY WATER IN:

- 01 COMMERCIAL - OFFICE BUILDINGS, SHOPPING CENTRES, HOTEL, ETC.
- 02 DOMESTIC - APARTMENTS, CONDOMINIUMS, OR ANY HIGH-RISE BUILDINGS.
- 03 INDUSTRIAL - FACTORIES, WAREHOUSE, ASSEMBLY HOUSE, PROCESSING CENTRES, ETC.
- 04 OTHERS - HOSPITALS, SCHOOLS, ETC.

THE PUMP

THE COMMON SERIES OF SHINDO PUMPS THAT ARE USE IN SHINDO HYDRO SYSTEM



VMS SERIES

VERTICAL MULTISTAGE
CENTRIFUGAL PUMPS

MAX FLOW: 240M³/HR
MAX HEAD: 305M



HSI SERIES

HORIZONTAL MULTISTAGE
CENTRIFUGAL PUMPS

MAX FLOW: 28M³/HR
MAX HEAD: 60M

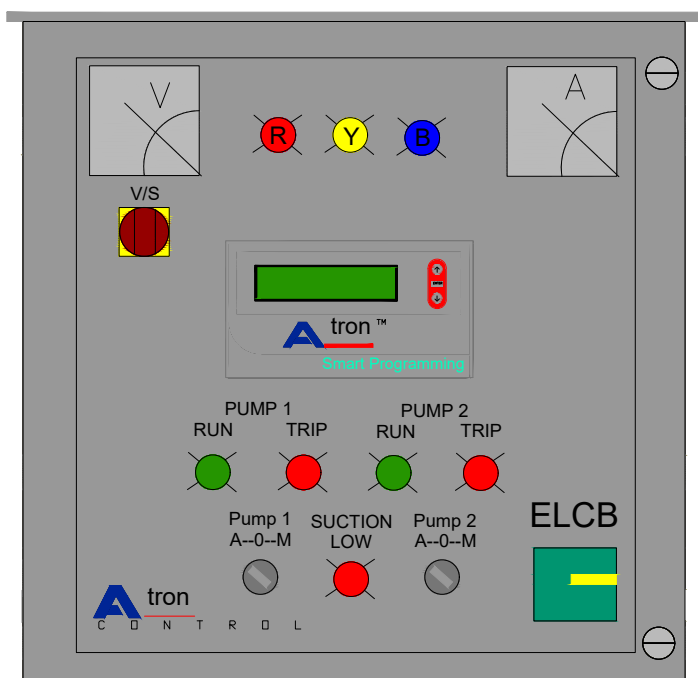


DZ(S) SERIES

HORIZONTAL S/STEEL
CENTRIFUGAL PUMPS

MAX FLOW: 200M³/HR
MAX HEAD: 64M

CONTROL PANEL



HIGH-PERFORMANCE VARIABLE FREQUENCY DRIVE CONTROL PANEL WITH ENHANCED STABILITY AND RELIABILITY THROUGH TECHNICAL OPTIMIZATION AND IT IS SUITABLE FOR VARIOUS WATER SUPPLY APPLICATIONS. COME WITH SMART PUMP DRIVE AND PROGRAMMABLE LOGIC CONTROLLERS (PLC) WHICH CAPABLE TO OPERATE FOR MULTI-FUNCTION PUMP APPLICATION. EASY AND USER-FRIENDLY SETTING AND VIEWING WITH LCD AND BACK-LIGHT. INTERNAL PROTECT WITH OVER VOLTAGE FEATURE. AVAILABLE WITH WIDE POWER RANGE FROM 2.2KW UP TO 400KW.

ADVANTAGES

● EASY TO INSTALL

READY TO BE USE - JUST CONNECTING THE SUCTION AND DISCHARGE PIPINGS AND THE POWER SUPPLY.

● COMPACT DESIGN

MAXIMIZE SPACE SAVING - PUMPS AND ALL NECESSARY ACCESSORIES MOUNTED ON A COMMON BASEPLATE.

● CONSTANT PRESSURE

BOOSTER PUMP CONTROLLER UNIT - THE SYSTEM HELPS TO VARY SPEED OF THE PUMP FOR A CONSTANT PRESSURE.

● EASY OPERATION

THE PRESSURE (SET POINT) AND PARAMETER SYSTEM CAN DIRECTLY BE ADJUSTED ON THE PANEL OF THE CONTROLLER UNIT.

● DURABLE OPERATION

FLOW CONTROL SYSTEM - AVOID FREQUENT ON/OFF OF THE PUMPS, THUS ENSURED DURABLE OPERATION.

● ENERGY SAVINGS

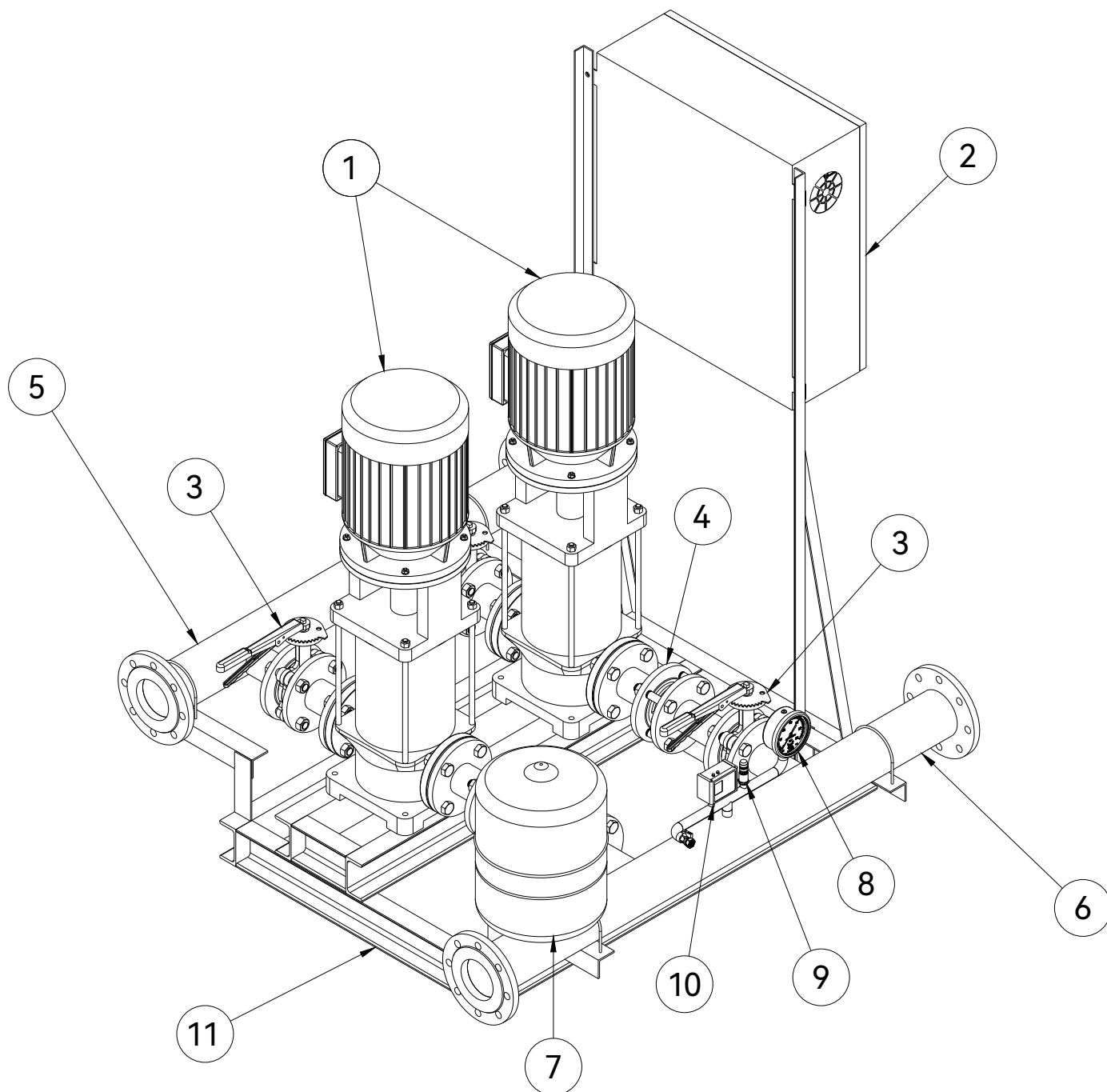
THE PUMPS ARE ONLY CONSUME THE POWER NEEDED AND THE SYSTEM WILL STOP THE PUMPS ONCE THERE IS NO WATER DEMAND.

● PROTECT AGAINST DRY RUN (OPTIONAL)

MEASUREMENT OF LEVEL IN THE SUPPLY TANK BY MEANS OF AN ANALOGUE LEVEL TRANSMITTER - DRY-RUNNING PROTECTION WITH LEVEL TRANSMITTER.

GENERAL ARRANGEMENT

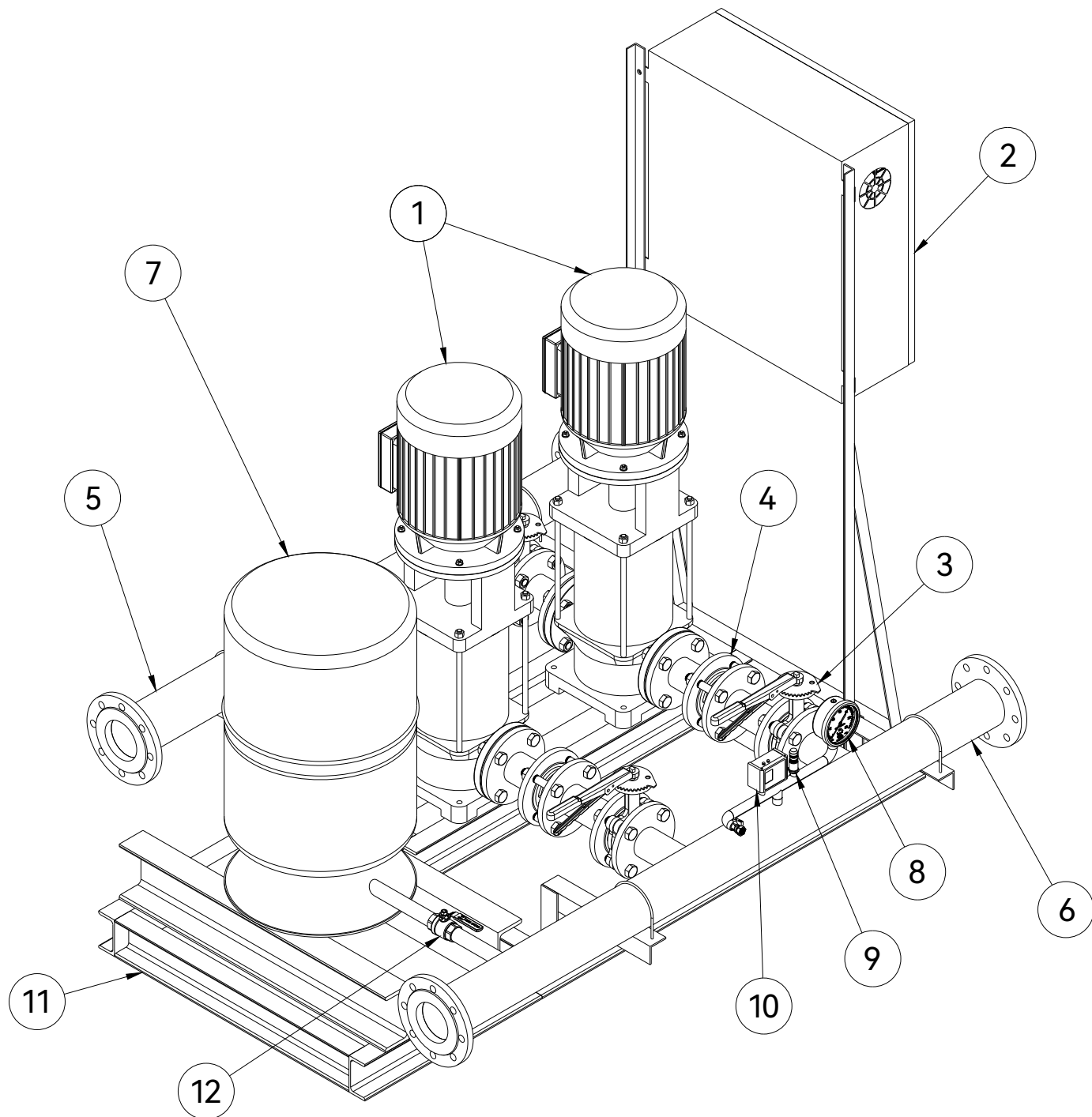
(VERTICAL PUMP SYSTEM WITH 18/24L PRESSURE TANK - VMS)



01 PUMP GENERATES WATER MOVEMENT/FLOW.	02 CONTROL PANEL TO CONTROL THE VARIABLE SPEED AND OTHER PARAMETERS DURING OPERATION IN ORDER TO MEETS THE ACTUAL PUMPING REQUIREMENT.	03 GATE VALVE TO PERMIT OR PREVENT THE FLOW OF WATER.	04 CHECK VALVE ALLOWS FLOW IN ONE DIRECTION ONLY AND AUTOMATICALLY PREVENTS BACK FLOW WHEN WATER IN THE LINE FLOW IN REVERSE DIRECTION.
05 SUCTION MANIFOLD TO SUPPLY AN EVENLY DISTRIBUTED FLOW OF WATER TO THE PUMP. AVAILABLE IN GI, SS304 AND ABS.	06 DISCHARGE MANIFOLD TO SUPPLY AN EVENLY DISTRIBUTED FLOW OF WATER OUT OF THE PUMP. AVAILABLE IN GI, SS304 AND ABS.	07 PRESSURE TANK (18/24L) TO PROVIDE WATER STORAGE FOR THE SYSTEM IN VERY LOW FLOW SITUATION.	08 PRESSURE GAUGE MEASURE AND DISPLAY THE FLOW PRESSURE.
09 PRESSURE TRANSMITTER MEASURE THE FLOW PRESSURE.	10 PRESSURE SWITCH CONTROLS START/STOP OF PUMP OPERATION.	11 STEEL BASEPLATE AS A MOUNTED BASE FOR INTEGRATING ALL OF THE COMPONENTS.	

GENERAL ARRANGEMENT

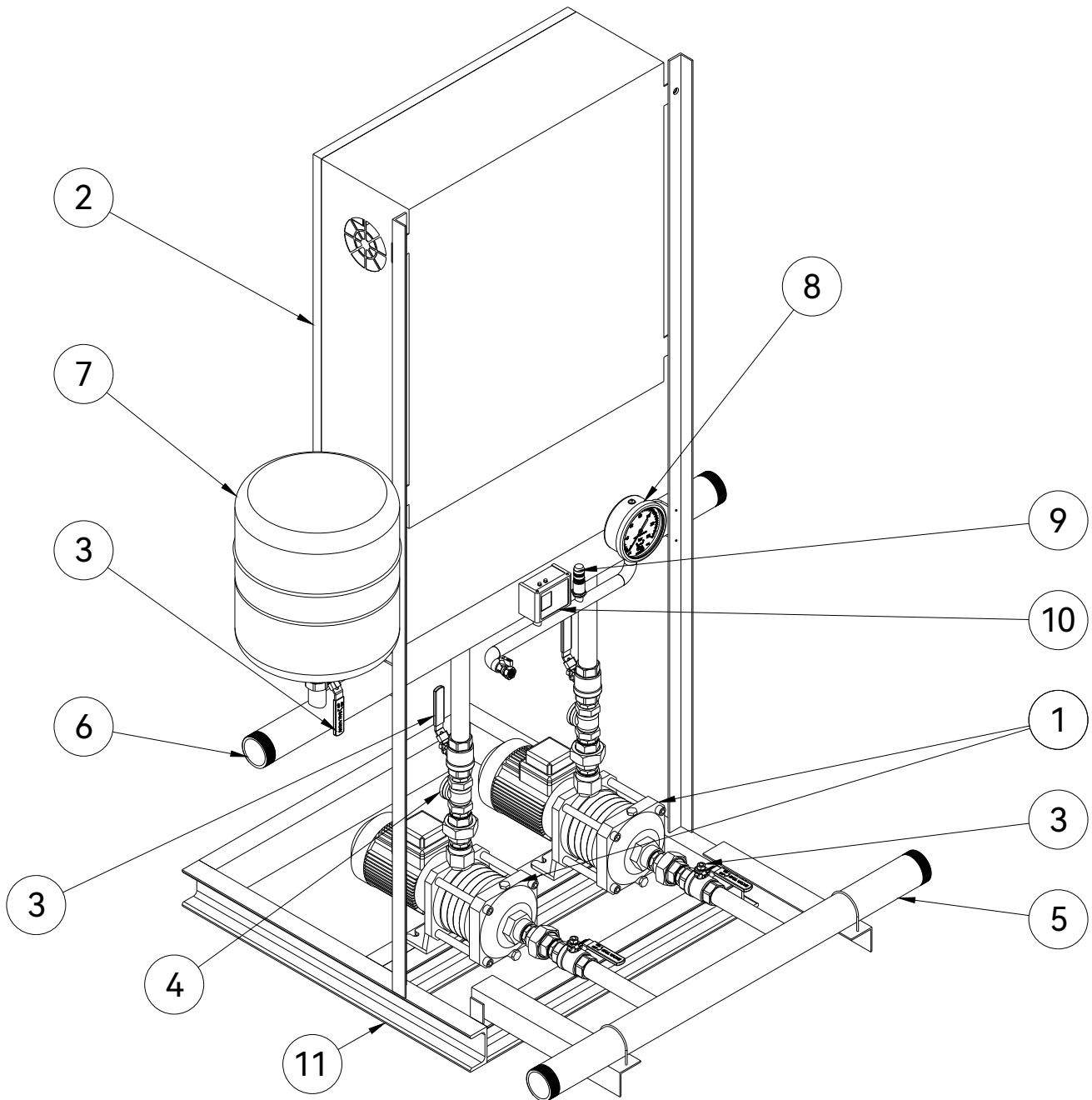
(VERTICAL PUMP SYSTEM WITH 100L PRESSURE TANK - VMS)



01 PUMP GENERATES WATER MOVEMENT/FLOW.	02 CONTROL PANEL TO CONTROL THE VARIABLE SPEED AND OTHER PARAMETERS DURING OPERATION IN ORDER TO MEETS THE ACTUAL PUMPING REQUIREMENT.	03 GATE VALVE TO PERMIT OR PREVENT THE FLOW OF WATER.	04 CHECK VALVE ALLOWS FLOW IN ONE DIRECTION ONLY AND AUTOMATICALLY PREVENTS BACK FLOW WHEN WATER IN THE LINE FLOW IN REVERSE DIRECTION.
05 SUCTION MANIFOLD TO SUPPLY AN EVENLY DISTRIBUTED FLOW OF WATER TO THE PUMP. AVAILABLE IN GI, SS304 AND ABS.	06 DISCHARGE MANIFOLD TO SUPPLY AN EVENLY DISTRIBUTED FLOW OF WATER OUT OF THE PUMP. AVAILABLE IN GI, SS304 AND ABS.	07 PRESSURE TANK (100L) TO PROVIDE WATER STORAGE FOR THE SYSTEM IN VERY LOW FLOW SITUATION.	08 PRESSURE GAUGE MEASURE AND DISPLAY THE FLOW PRESSURE.
09 PRESSURE TRANSMITTER MEASURE THE FLOW PRESSURE.	10 PRESSURE SWITCH CONTROLS START/STOP OF PUMP OPERATION.	11 STEEL BASEPLATE AS A MOUNTED BASE FOR INTEGRATING ALL OF THE COMPONENTS.	12 BALL VALVE TO PERMIT OR PREVENT THE FLOW OF WATER.

GENERAL ARRANGEMENT

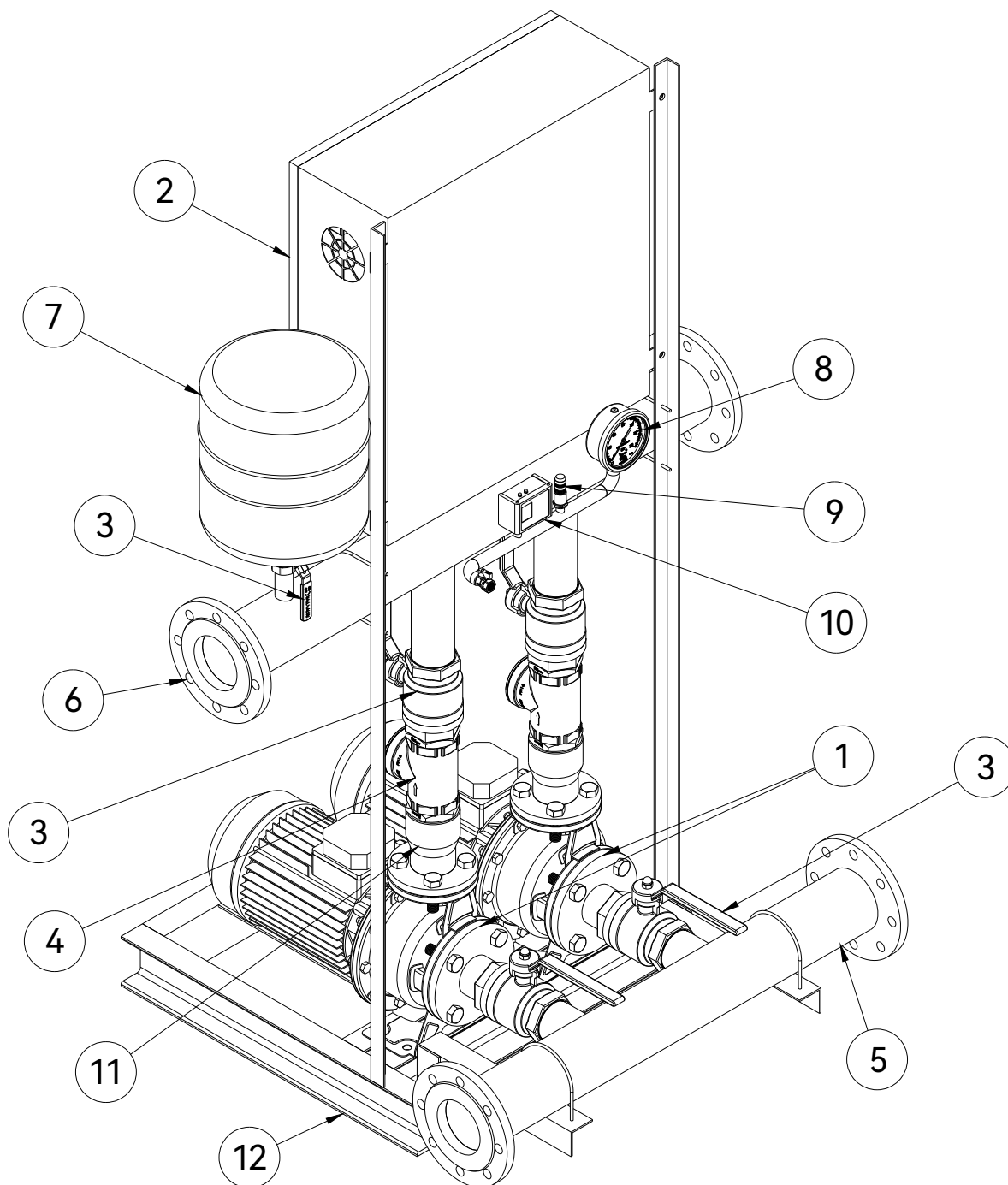
(HORIZONTAL PUMP SYSTEM WITH 18L PRESSURE TANK - HSI)



01 PUMP GENERATES WATER MOVEMENT/FLOW.	02 CONTROL PANEL TO CONTROL THE VARIABLE SPEED AND OTHER PARAMETERS DURING OPERATION IN ORDER TO MEETS THE ACTUAL PUMPING REQUIREMENT.	03 BALL VALVE TO PERMIT OR PREVENT THE FLOW OF WATER.	04 CHECK VALVE ALLOWS FLOW IN ONE DIRECTION ONLY AND AUTOMATICALLY PREVENTS BACK FLOW WHEN WATER IN THE LINE FLOW IN REVERSE DIRECTION.
05 SUCTION MANIFOLD TO SUPPLY AN EVENLY DISTRIBUTED FLOW OF WATER TO THE PUMP. AVAILABLE IN GI, SS304 AND ABS.	06 DISCHARGE MANIFOLD TO SUPPLY AN EVENLY DISTRIBUTED FLOW OF WATER OUT OF THE PUMP. AVAILABLE IN GI, SS304 AND ABS.	07 PRESSURE TANK (18L) TO PROVIDE WATER STORAGE FOR THE SYSTEM IN VERY LOW FLOW SITUATION.	08 PRESSURE GAUGE MEASURE AND DISPLAY THE FLOW PRESSURE.
09 PRESSURE TRANSMITTER MEASURE THE FLOW PRESSURE.	10 PRESSURE SWITCH CONTROLS START/STOP OF PUMP OPERATION.	11 STEEL BASEPLATE AS A MOUNTED BASE FOR INTEGRATING ALL OF THE COMPONENTS.	

GENERAL ARRANGEMENT

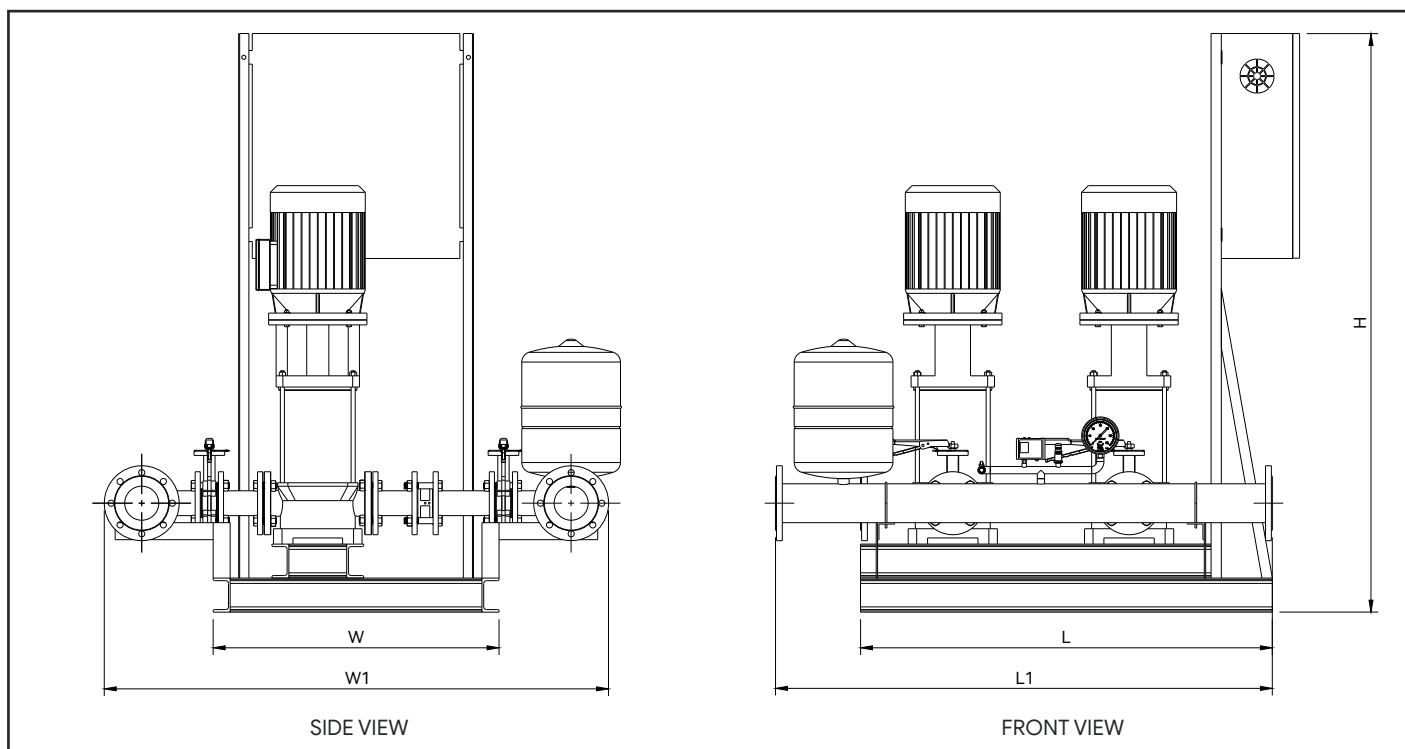
(HORIZONTAL PUMP SYSTEM WITH 18L PRESSURE TANK - DZ(S))



01 PUMP	02 CONTROL PANEL	03 BALL VALVE	04 CHECK VALVE
GENERATES WATER MOVEMENT/FLOW.	TO CONTROL THE VARIABLE SPEED AND OTHER PARAMETERS DURING OPERATION IN ORDER TO MEETS THE ACTUAL PUMPING REQUIREMENT.	TO PERMIT OR PREVENT THE FLOW OF WATER.	ALLOWS FLOW IN ONE DIRECTION ONLY AND AUTOMATICALLY PREVENTS BACK FLOW WHEN WATER IN THE LINE FLOW IN REVERSE DIRECTION.
05 SUCTION MANIFOLD	06 DISCHARGE MANIFOLD	07 PRESSURE TANK (18L)	08 PRESSURE GAUGE
TO SUPPLY AN EVENLY DISTRIBUTED FLOW OF WATER TO THE PUMP. AVAILABLE IN GI, SS304 AND ABS.	TO SUPPLY AN EVENLY DISTRIBUTED FLOW OF WATER OUT OF THE PUMP. AVAILABLE IN GI, SS304 AND ABS.	TO PROVIDE WATER STORAGE FOR THE SYSTEM IN VERY LOW FLOW SITUATION.	MEASURE AND DISPLAY THE FLOW PRESSURE.
09 PRESSURE TRANSMITTER	10 PRESSURE SWITCH	11 REDUCER	12 STEEL BASEPLATE
MEASURE THE FLOW PRESSURE.	CONTROLS START/STOP OF PUMP OPERATION.	USED TO CONNECT PIPES OF DIFFERENT SIZES TO REDUCE OR INCREASE THE SIZE OF THE PIPE IN THE SYSTEM.	AS A MOUNTED BASE FOR INTEGRATING ALL OF THE COMPONENTS.

DIMENSION

(VERTICAL PUMP SYSTEM WITH 18/24L PRESSURE TANK - VMS)

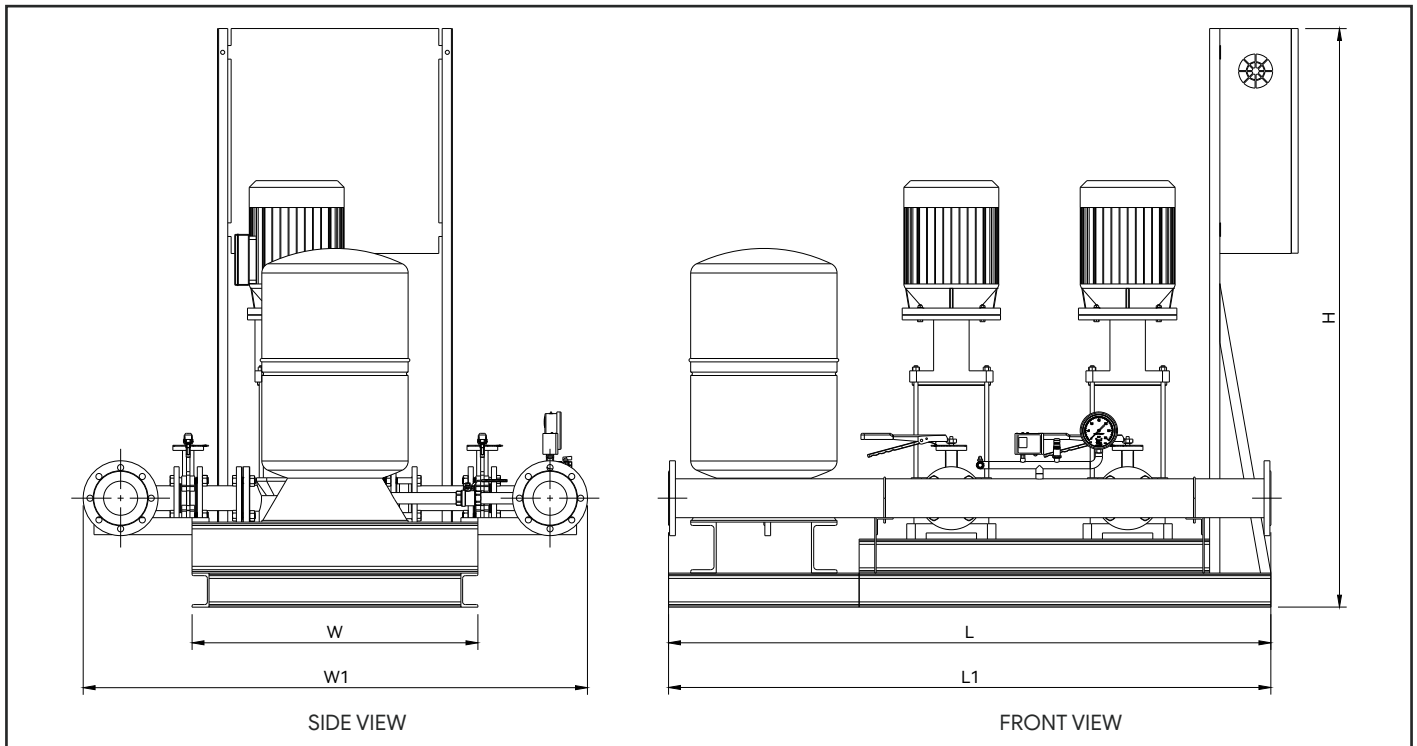


MODEL	W (mm)	W1 (mm)	L (mm)	L1 (mm)	H (mm)	MANIFOLD SIZE (Inch)	TANK (Litre)
VMS 2	840	1170	1110	1240	1700	2	18/24
VMS 4	840	1170	1110	1240	1700	2	18/24
VMS 8	840	1200	1180	1240	1700	2	18/24
VMS 16	840	1280	1180	1240	1700	3	18/24

REMARK: ALL DIMENSIONS SHOWN ARE FOR REFERENCE ONLY. ACTUAL PRODUCT MAY VARY DUE TO PRODUCT ENHANCEMENT.

DIMENSION

(VERTICAL PUMP SYSTEM WITH 100L PRESSURE TANK - VMS)

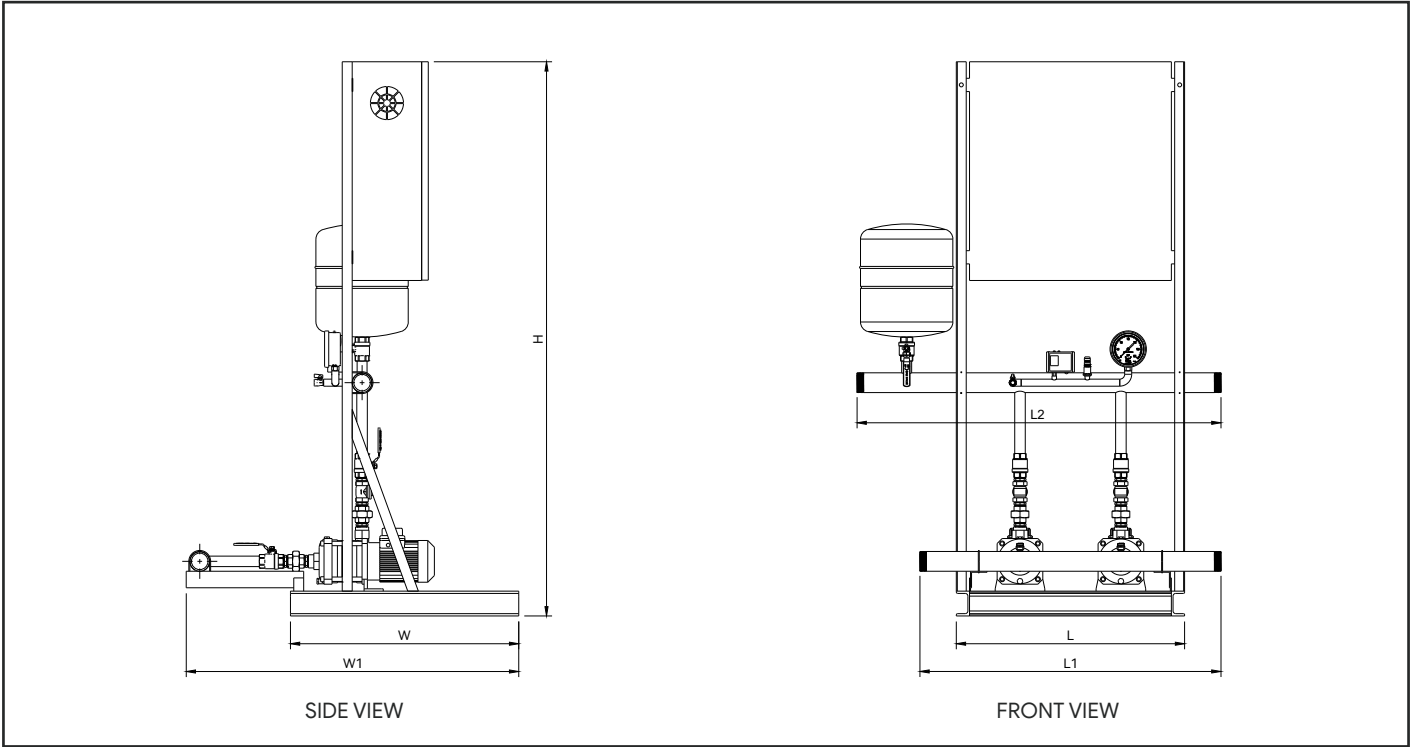


MODEL	W (mm)	W1 (mm)	L (mm)	L1 (mm)	H (mm)	MANIFOLD SIZE (Inch)	TANK (Litre)
VMS 32	840	1550	1740	1740	1700	4	100
VMS 42	840	1600	1810	1810	1700	4	100
VMS 65	840	1800	1810	1810	1700	6	100
VMS 85	840	1800	1840	1840	1700	6	100
VMS 120	840	2000	2090	2090	1700	8	100
VMS 150	840	2000	2090	2090	1700	8	100
VMS 200	840	2170	2350	2350	1700	8	100

REMARK: ALL DIMENSIONS SHOWN ARE FOR REFERENCE ONLY. ACTUAL PRODUCT MAY VARY DUE TO PRODUCT ENHANCEMENT.

DIMENSION

(HORIZONTAL PUMP SYSTEM WITH 18L PRESSURE TANK - HSI)

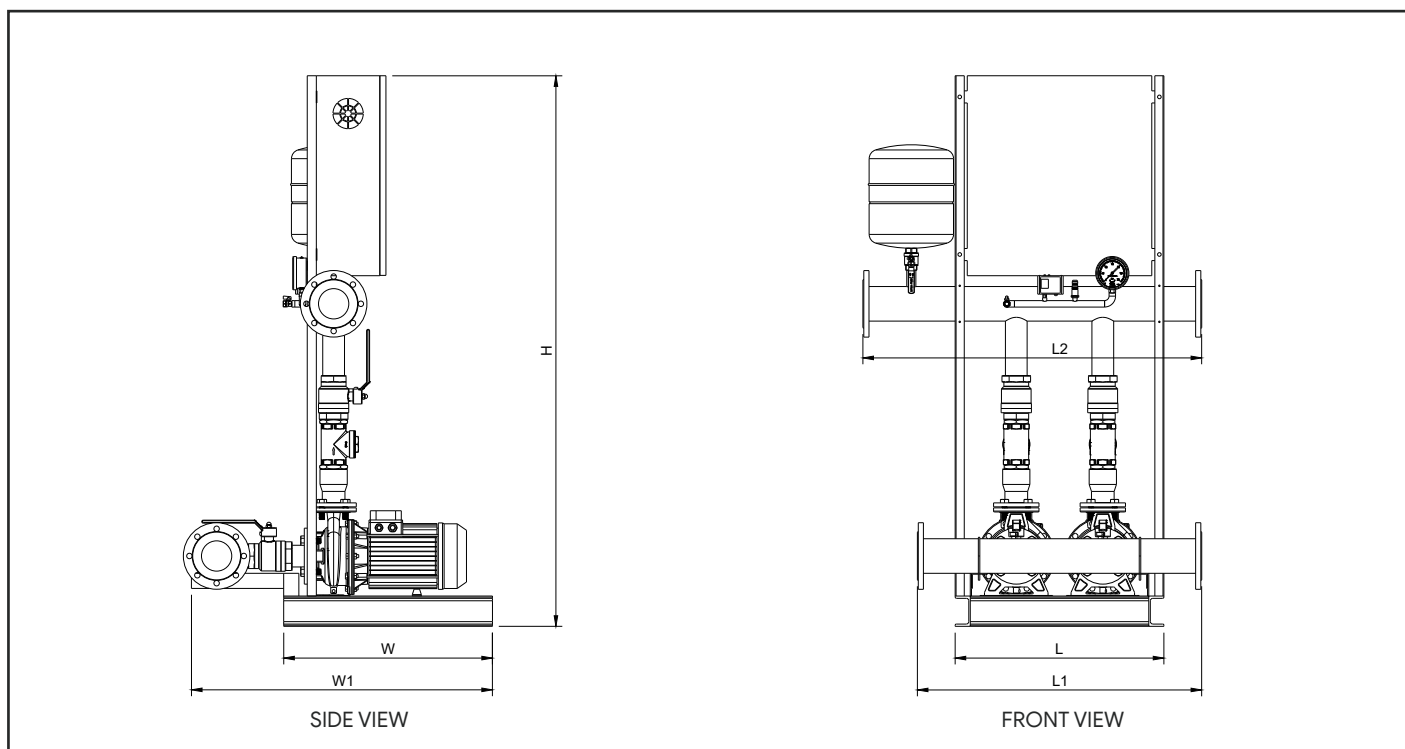


MODEL	W (mm)	W1 (mm)	L (mm)	L1 (mm)	L2 (mm)	H (mm)	MANIFOLD SIZE (Inch)	TANK (Litre)
HSI 2	690	1000	690	950	1120	1600	2	18
HSI 4	690	1000	690	950	1120	1600	2	18
HSI 8	690	1000	690	950	1120	1600	2	18
HSI 16	690	1000	690	950	1120	1600	3	18
HSI 20	690	1000	690	950	1120	1600	3	18

REMARK: ALL DIMENSIONS SHOWN ARE FOR REFERENCE ONLY. ACTUAL PRODUCT MAY VARY DUE TO PRODUCT ENHANCEMENT.

DIMENSION

(HORIZONTAL PUMP SYSTEM WITH 18L PRESSURE TANK - DZ(S))



MODEL	W (mm)	W1 (mm)	L (mm)	L1 (mm)	L2 (mm)	H (mm)	MANIFOLD SIZE (Inch)	TANK (Litre)
DZ(S)50-32	690	1000	920	1170	1350	1700	3	18
DZ(S)65-40	750	1060	930	1180	1360	1700	4	18
DZ(S)65-50	890	1200	930	1180	1360	1700	4	18
DZ(S)80-65	940	1250	930	1180	1360	1700	4	18
DZ(S)100-80	1090	1400	1130	1380	1560	1700	6	18

REMARK: ALL DIMENSIONS SHOWN ARE FOR REFERENCE ONLY. ACTUAL PRODUCT MAY VARY DUE TO PRODUCT ENHANCEMENT.

